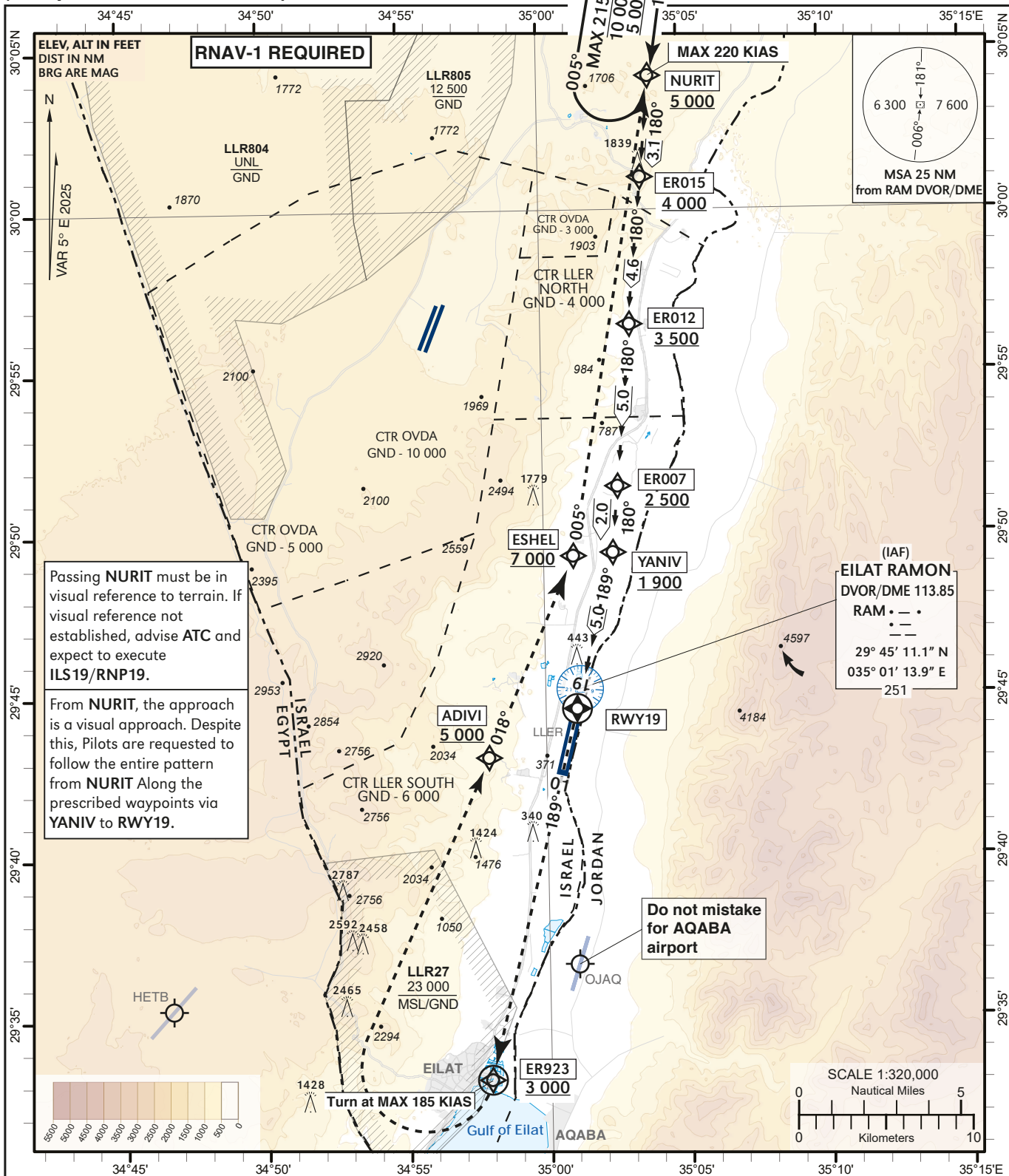


**VISUAL
APPROACH CHART**
(with prescribed RNAV track)

AD ELEV **288 ft**
HEIGHTS RELATED TO
THR RWY 19 - ELEV **272 ft**

TA BY ATC
ATIS 132.55
ACC 120.90
TWR 119.00

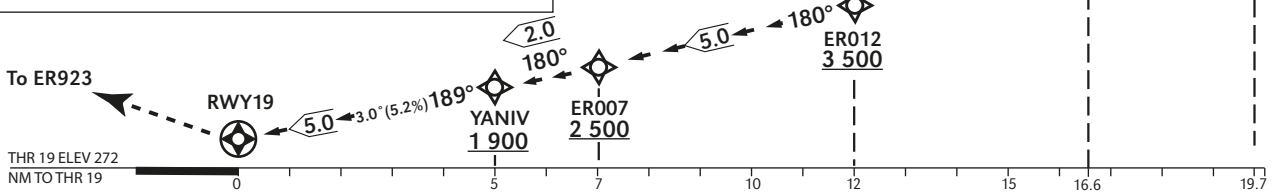
**EILAT/ILAN &
ASAF RAMON (LLER)**
NURIT approach RWY 19



GO AROUND

Initial climb 8 000, Climb to **ER923 3 000** or above, turn **RIGHT (MAX 185 KIAS)** direct to **ADIVI 5 000** or above, **ESHEL 7 000** or above, **NURIT 8 000** and hold.

1	2	3	4	NM THR 19	ER015	
640	960	1280	1600	ALT	4 000	NURIT
						5 000



LLER - NURIT RNAV VISUAL RWY 19

Navigation Specification	Path Descriptor (Recommended)	Waypoint Identifier	Latitude Longitude	Fly-Over	Course/Track M° (T°)	Distance (NM)	Turn Direction	Altitude (ft)	Speed (Kts)	Remarks
RNAV1	IF	NURIT	30° 04' 10" N 035° 03' 57" E					+5 000	-220	
RNAV1	TF	ER015	30° 01' 04.0" N 035° 03' 42.6" E		180 (185.0)	3.1		+4 000		
RNAV1	TF	ER012	29° 56' 28" N 035° 03' 10" E		180 (185.0)	4.6		+3 500		
RNAV1	TF	ER007	29° 51' 28" N 035° 02' 40" E		180 (185.0)	5.0		+2 500		
RNAV1	TF	YANIV	29° 49' 25" N 035° 02' 28" E		180 (185.0)	2.1		+1 900		
RNAV1	TF	RWY19	29° 44' 34.60"N 035° 01' 06.50" E	Y	189 (193.7)	5.0				
Go Around										
RNAV1	TF	ER923	29° 33' 06" N 034° 57' 54" E	Y	189 (193.7)	11.8		+3 000		
RNAV1	DF	ADIVI	29° 43' 05" N 034° 57' 57" E				R	+5 000	-185	
RNAV1	TF	ESHEL	29° 49' 20" N 035° 01' 04" E		018 (023.5)	6.8		+7 000		
RNAV1	TF	NURIT	30° 04' 10" N 035° 03' 57" E		005 (009.6)	15.0	L	@8 000		
RNAV1	HM	NURIT	30° 04' 10" N 035° 03' 57" E	Y	185 (190.2)		R	-10 000 +5 000	-215	

HOLDING IDENTIFICATION

Holding Fix	Latitude Longitude	Inbound Course/Track M° (T°)	MAX IAS (Kts)	Altitude (ft)	Outbound Time / Distance	Turn Direction
NURIT	30° 04' 10"N 035° 03' 57" E	185 (190.2)	215	-10 000 +5 000	1 Min	R