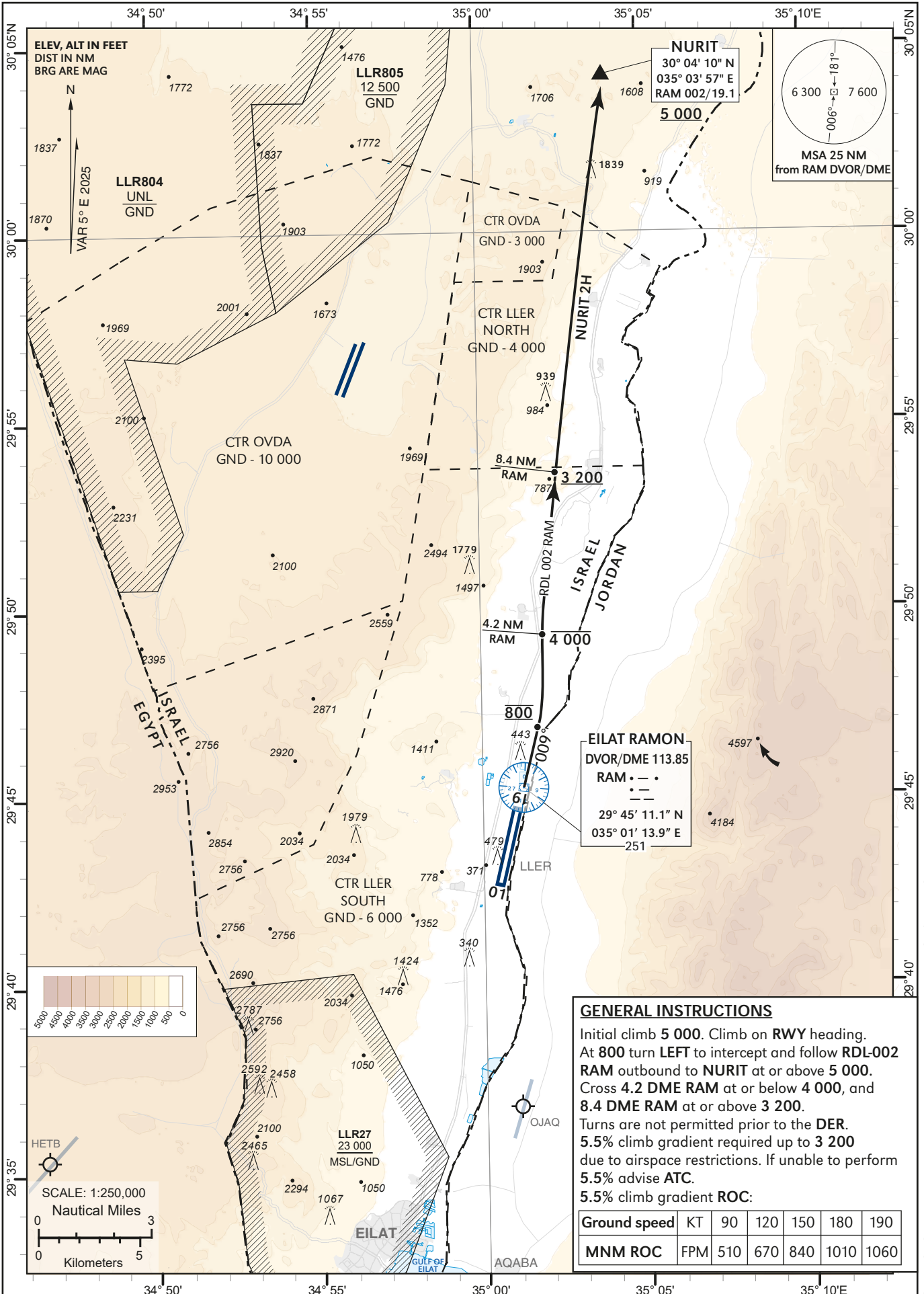


**STANDARD
INSTRUMENT
DEPARTURE
CHART (SID) - ICAO**

TRANSITION ALTITUDE BY ATC

**ATIS 132.55
TWR 119.00
ACC 120.90**

**EILAT/ILAN &
ASAF RAMON (LLER)
RWY 01
NURIT 2H**



GENERAL INSTRUCTIONS

Initial climb 5 000. Climb on RWY heading.
 At 800 turn LEFT to intercept and follow RDL-002 RAM outbound to NURIT at or above 5 000.
 Cross 4.2 DME RAM at or below 4 000, and 8.4 DME RAM at or above 3 200.
 Turns are not permitted prior to the DER.
 5.5% climb gradient required up to 3 200 due to airspace restrictions. If unable to perform 5.5% advise ATC.
 5.5% climb gradient ROC:

Ground speed	KT	90	120	150	180	190
MNM ROC	FPM	510	670	840	1010	1060

CHANGES: New ALT Restriction Added at 4.2 DME RAM, VOR/DME LOT Withdrawn.

THIS PAGE INTENTIONALLY LEFT BLANK