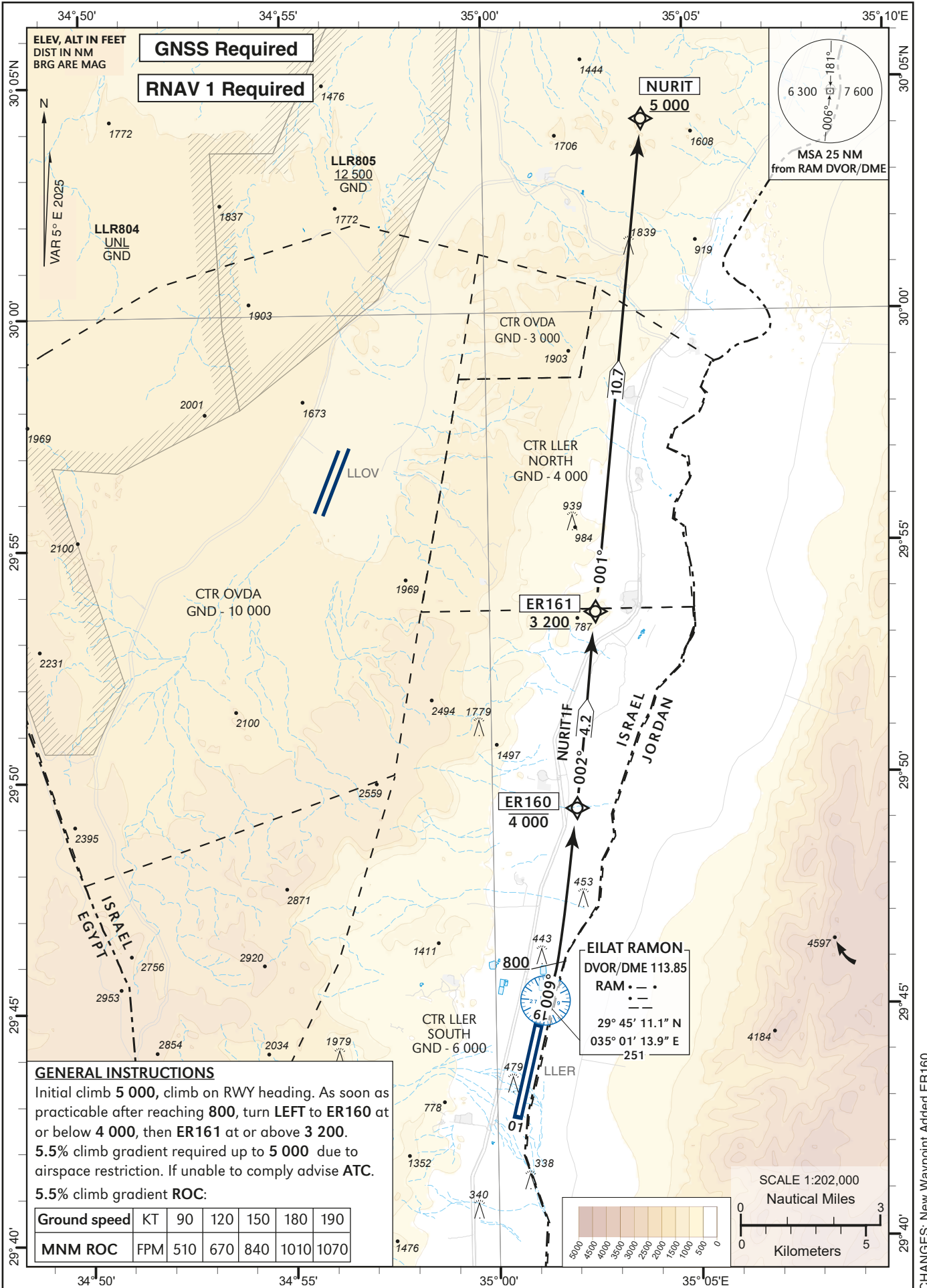


**STANDARD INSTRUMENT  
DEPARTURE CHART  
(SID) - ICAO**

TRANSITION ALTITUDE BY ATC

ATIS 132.55  
TWR 119.00  
ACC 120.90

**EILAT / ILAN &  
ASAF RAMON (LLER)  
RWY 01  
NURIT1F**



**GENERAL INSTRUCTIONS**  
Initial climb 5 000, climb on RWY heading. As soon as practicable after reaching 800, turn LEFT to ER160 at or below 4 000, then ER161 at or above 3 200.  
5.5% climb gradient required up to 5 000 due to airspace restriction. If unable to comply advise ATC.  
5.5% climb gradient ROC:

Ground speed	KT	90	120	150	180	190
MNM ROC	FPM	510	670	840	1010	1070

CHANGES: New Waypoint Added ER160.

NURIT1F RWY 01

Navigation Specification	Path Descriptor (Recommended)	Waypoint Identifier	Latitude	Longitude	Fly-Over	Course/Track M° (T°)	Distance (NM)	Turn Direction	Altitude (ft)	Speed (Kts)	Remarks
RNAV1	CA					009 (013.7)			+800		
RNAV1	DF	ER160	29° 49' 19.8"N	035° 02' 07.5" E					-4 000		
RNAV1	TF	ER161	29° 53' 31"N	035° 02' 37" E		001 (005.8)	4.2		+3 200		
RNAV1	TF	NURIT	30° 04' 10"N	035° 03' 57" E		001 (006.2)	10.7		+5 000		