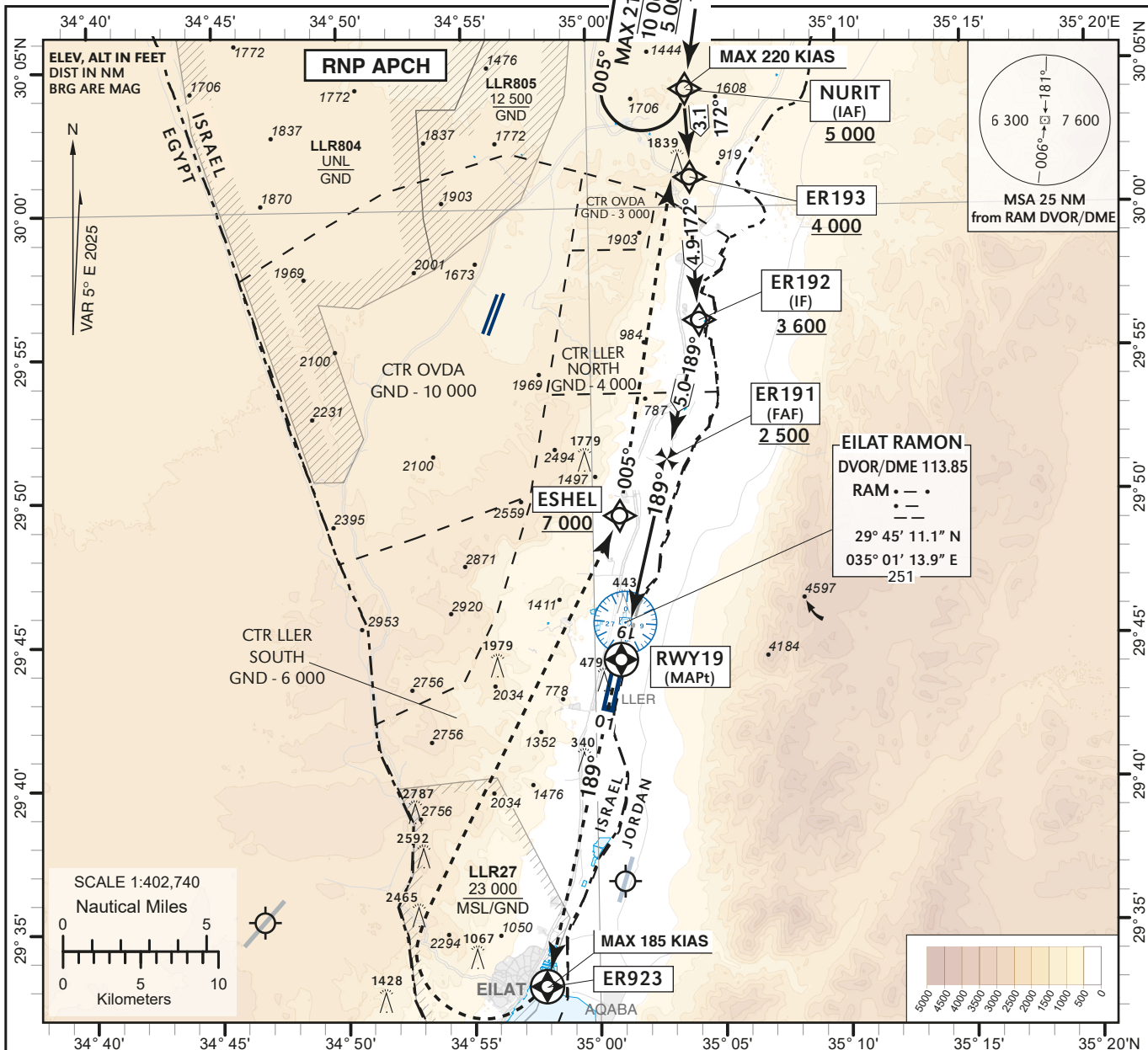


INSTRUMENT APPROACH CHART - ICAO AD ELEV **288 ft** TA BY ATC
 HEIGHTS RELATED TO THR RWY 19 - ELEV **272 ft**

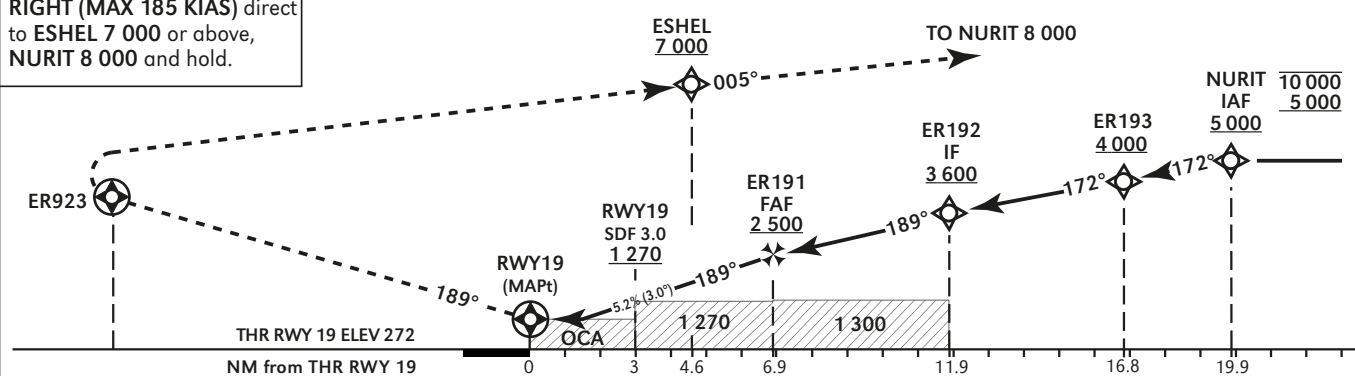
ATIS 132.55
 ACC 120.90
 TWR 119.00

**EILAT/ILAN &
ASAF RAMON (LLER)**
 RNP RWY 19



MISSED APPROACH:
 Initial climb 8 000, Climb on course 189° to ER923, turn RIGHT (MAX 185 KIAS) direct to Eshel 7 000 or above, NURIT 8 000 and hold.

	RWY 19	2 NM	3 NM	4 NM	5 NM	6 NM
ALT (HAT)	960 (688)	1 280 (1 008)	1 590 (1 318)	1 910 (1 638)	2 230 (1 958)	



OCA (H)		A	B	C	D	Circling		N/A					
LNAV	2.5%	830 (560)											
	4.0%	700 (430)											
LNAV/VNAV*	2.5%	640 (370)	650 (380)	670 (400)	690 (420)	GS	KT	80	100	120	140	160	180
	4.0%	580 (310)	590 (320)	600 (330)	610 (340)			ft/min	421	527	632	737	843

* BARO-VNAV Temperature: MNM -10C/MAX 60C.

ROD: 5.2%

CHANGES: WPT Designator Updated, New Waypoint Added ER193, VOR/DME Withdrawn.

RNP RWY 19

Navigation Specification	Path Descriptor (Recommended)	Waypoint Identifier	Latitude Longitude	Fly-Over	Course/Track M° (T°)	Distance (NM)	Turn Direction	Altitude (ft)	Speed (Kts)	Remarks
RNAV1	IF	NURIT	30° 04' 10"N 035° 03' 57" E					+5 000	-220	IAF
RNAV1	TF	ER193	30° 01' 03.8"N 035° 04' 05.2" E		172 (177.5)	3.1		+4 000		
RNAV1	TF	ER192	29° 56' 09"N 035° 04' 21" E		172 (177.5)	4.9		+3 600		IF
RNP APCH	TF	ER191	29° 51' 17.2"N 035° 02' 59.3" E		189 (193.7)	5.0	R	+2 500		FAF
RNP APCH	CF	RWY19	29° 44' 34.60"N 035° 01' 06.50" E	Y	189 (193.7)			+322		MAPt

Non Precision Final Approach – Slope (Descent angle)	5.24% (3.0°)
--	-----------------

STANDARD MISSED APPROACH

Navigation Specification	Path Descriptor (Recommended)	Waypoint Identifier	Latitude Longitude	Fly-Over	Course/Track M° (T°)	Distance (NM)	Turn Direction	Altitude (ft)	Speed (Kts)	Remarks
RNAV1	CF	ER923	29° 33' 06"N 034° 57' 54" E	Y	189 (193.7)				-185	
RNAV1	DF	ESHEL	29° 49' 20"N 035° 01' 04" E				R	+7 000		
RNAV1	TF	NURIT	30° 04' 10"N 035° 03' 57" E		005 (009.6)	15.0	L	@8000		
RNAV1	HM	NURIT	30° 04' 10"N 035° 03' 57" E	Y	185 (190.2)		R	-10 000 +5 000	-215	

HOLDING IDENTIFICATION

Holding Fix	Latitude Longitude	Inbound Course/Track M° (T°)	MAX IAS (Kts)	Altitude (ft)	Outbound Time / Distance	Turn Direction
NURIT	30° 04' 10"N 035° 03' 57" E	185 (190.2)	215	-10 000 +5 000	1 Min	R