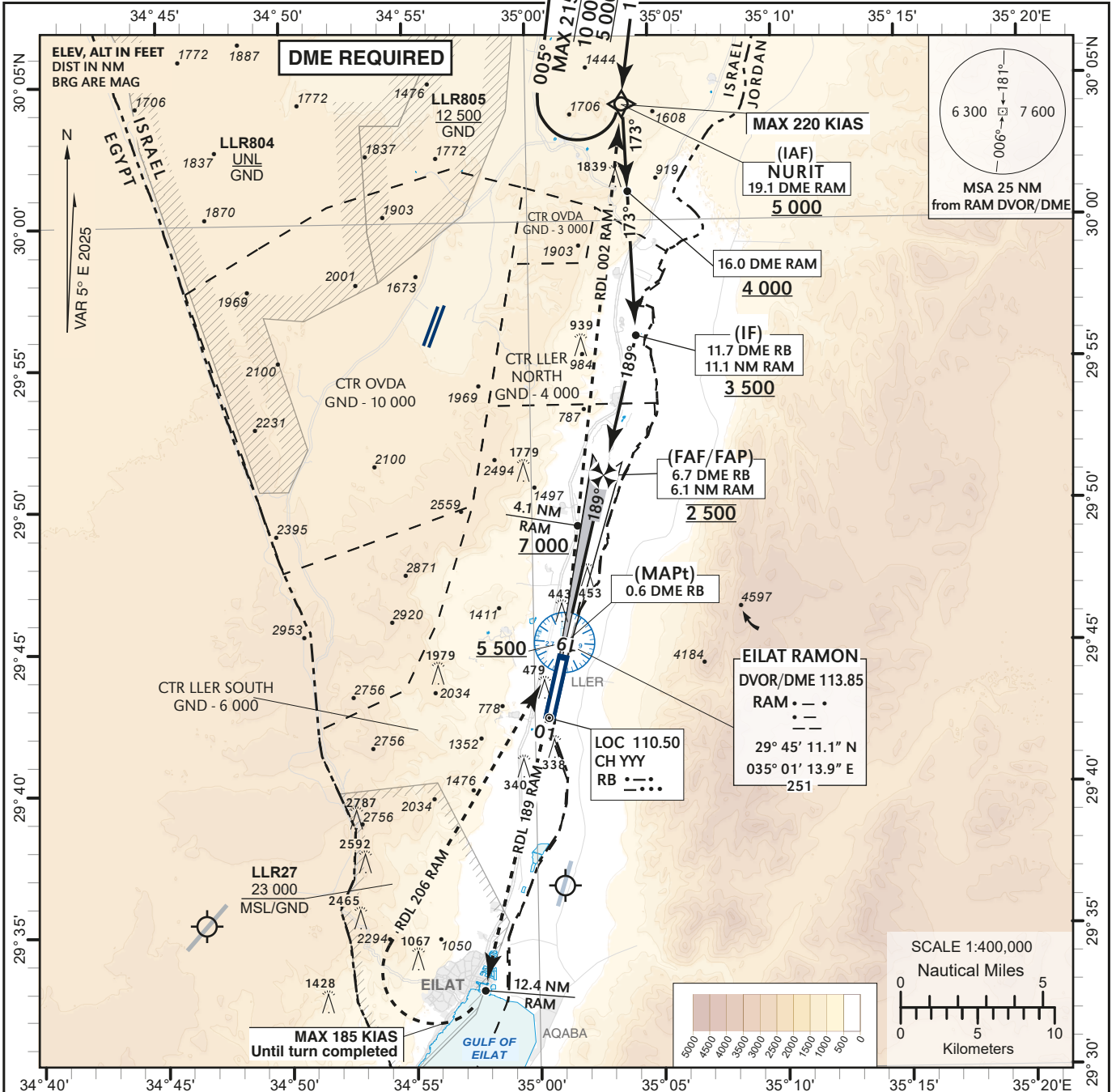


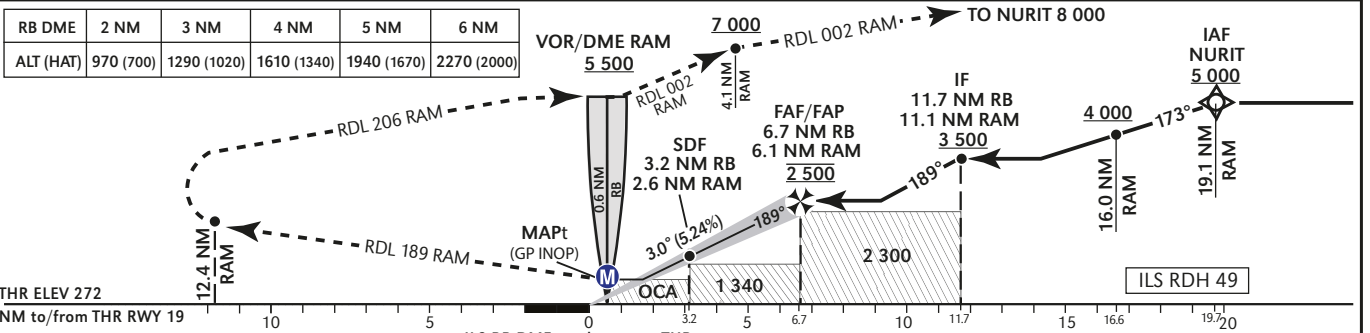
**INSTRUMENT APPROACH CHART - ICAO** AD ELEV **288 ft**  
HEIGHTS RELATED TO THR RWY 19 - ELEV **272 ft**

TA BY ATC  
ATIS 132.55  
ACC 120.90  
TWR 119.00

**EILAT/ILAN & ASAF RAMON (LLER)**  
ILS RWY 19



**MISSED APPROACH:** Initial climb 8 000, climb on RWY course to intercept and follow RDL-189 RAM outbound until 12.4 DME RAM. Turn RIGHT (MAX 185 KIAS until turn completed) to intercept and follow RDL-206 RAM inbound to RAM DVOR/DME at 5 500 or above. Proceed on RDL-002 RAM outbound to cross 4.1 DME RAM at 7 000 or above, to NURIT at 8 000 and HOLD (4.1 DME RAM at 7 000 requires 4% climb gradient due to airspace restrictions. If unable contact ATC).



	ILS RB DME reads zero at THR				GS	KT	80	100	120	140	160	180
	A	B	C	D								
OCA (OCH)												
ILS CAT I 2.5%	670 (398)											
ILS CAT I 4.0%	426 (154)	438 (166)	446 (174)	457 (185)								
GP INOP	730 (458)											
CIRCLING	N/A											
					ROD: 5.2%	ft/min	425	531	637	743	849	955

CHANGES: ALT Restriction Added at 16.0 DME RAM. ALT Restriction Updated at NURIT.

LLER ILS/LOC only RWY 19

Significant Point	Latitude Longitude	True Azimut (Reference)	DME distance	Speed (Kts)
NURIT (IAF)	30° 04' 10.0"N 035° 03' 57.0" E		19.08 DME RAM	-220
16 DME RAM			16.0 DME RAM	
IF	29° 55' 59.1"N 035° 04' 18.5" E	13.72° (LOC 19)	11.72 DME RB* 11.1 DME RAM	
FAF/ FAP	29° 51' 07.0"N 035° 02' 56.5" E	13.72° (LOC 19)	6.72 DME RB* 6.1 DME RAM	
MAPt GP INOP	29° 45' 09.7"N 035° 01' 16.4" E		0.6 DME RB*	

\* 0 at THR

Precision Final Approach - Descent angle (Slope)	3.00° (5.24%)
Non Precision Final Approach – Slope (Descent angle)	5.32° (3.05%)

NURIT HOLDING IDENTIFICATION

Holding Fix	Latitude Longitude	Inbound Course/Track M° (T°)	MAX IAS (Kts)	Altitude (ft)	Outbound Time / Distance	Turn Direction
NURIT	30° 04' 10"N 035° 03' 57" E	185 (190.2)	215	-10 000 +5 000	1 Min	R