

**AERODROME
CHART - ICAO**

29° 43' 38" N
035° 00' 51" E

AD ELEV 288 ft

**ATIS 132.55 TWR 119.00
GND 121.70**

**EILAT / ILAN &
ASAF RAMON (LLER)**

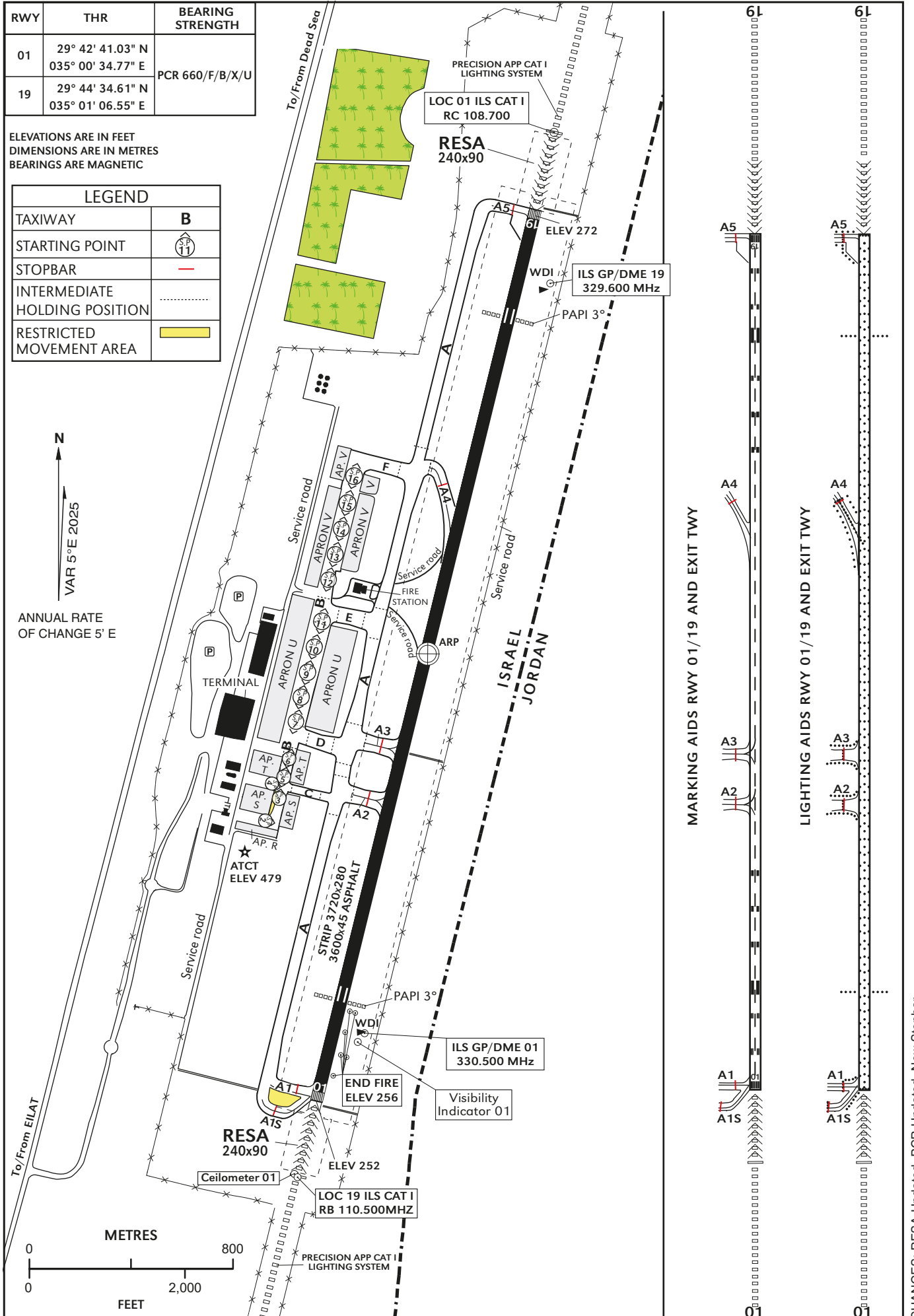
RWY	THR	BEARING STRENGTH
01	29° 42' 41.03" N 035° 00' 34.77" E	PCR 660/F/B/X/U
19	29° 44' 34.61" N 035° 01' 06.55" E	

ELEVATIONS ARE IN FEET
DIMENSIONS ARE IN METRES
BEARINGS ARE MAGNETIC

LEGEND	
TAXIWAY	B
STARTING POINT	
STOPBAR	
INTERMEDIATE HOLDING POSITION	
RESTRICTED MOVEMENT AREA	

N
↑
VAR 5°E 2025

ANNUAL RATE
OF CHANGE 5' E



MARKING AIDS RWY 01/19 AND EXIT TWY

LIGHTING AIDS RWY 01/19 AND EXIT TWY

CHANGES: RESA Updated, PCR Updated, New Stopbar.

THIS PAGE INTENTIONALLY LEFT BLANK