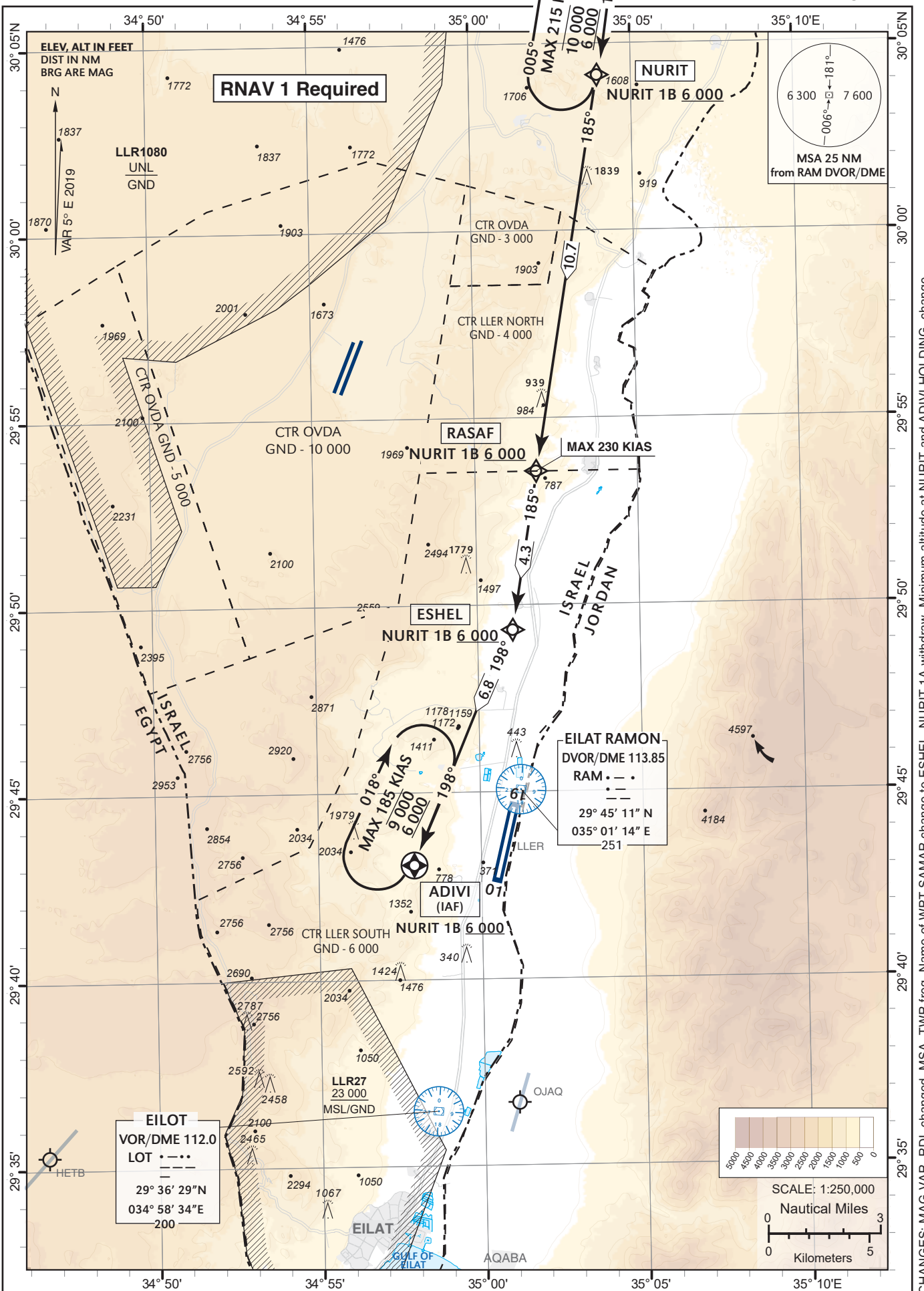


**STANDARD  
INSTRUMENT  
ARRIVAL (STAR)  
CHART - ICAO**

TRANSITION ALTITUDE BY ATC  
AD ELEV **288 ft**  
HEIGHTS RELATED TO  
THR RWY 01 - ELEV **252 ft**

ATIS **132.55**  
ACC **120.90**  
TWR **119.00**

**EILAT/ILAN &  
ASAF RAMON (LLER)  
RWY01  
NURIT 1B**



CHANGES: MAG VAR, RDL changed, MSA, TWR freq, Name of WPT SAMAR change to ESHEL, NURIT 1A withdraw, Minimum altitude at NURIT and ADIVI HOLDING change.

NURIT1B RWY 01

Navigation Specification	Path Descriptor (Recommended)	Waypoint Identifier	Latitude Longitude	Fly-Over	Course/Track M° (T°)	Distance (NM)	Turn Direction	Altitude (ft)	Speed (Kts)	Remarks
RNAV1	IF	NURIT	30° 04' 10"N 035° 03' 57" E	-				+6 000		
RNAV1	TF	RASAF	29° 53' 35"N 035° 01' 53" E	-	185 (189.6)	10.7		+6 000	-230	
RNAV1	TF	ESHEL	29° 49' 20"N 035° 01' 04" E	-	185 (189.6)	4.3		+6 000		
RNAV1	TF	ADIVI	29° 43' 05"N 034° 57' 57" E	-	198 (203.5)	6.8	R	+6 000		IAF

NURIT 1B Holding Identification

Holding Fix	Latitude Longitude	Inbound Course/Track M° (T°)	MAX IAS (Kts)	Altitude (ft)	Outbound Time / Distance	Turn Direction
NURIT	30° 04' 10"N 035° 03' 57" E	185 (190.2)	215	-10 000 +6 000	1 Min	R
ADIVI	29° 43' 05"N 034° 57' 57" E	198 (203.5)	185	-9 000 +6 000	1 Min	R

NURIT holding outbound limiting distance is 6.4NM

Requires RNAV hold functionality