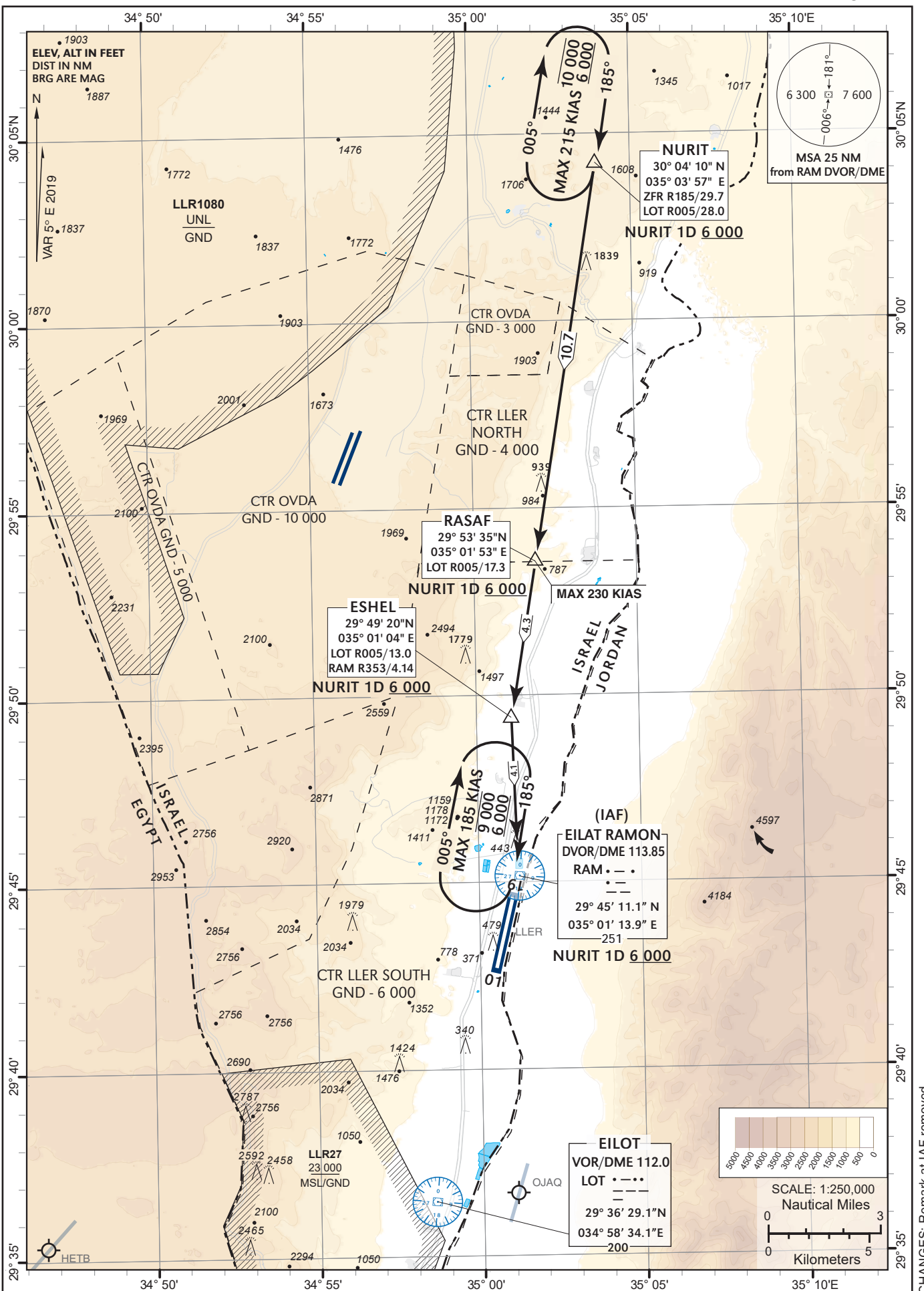


STANDARD  
INSTRUMENT  
ARRIVAL (STAR)  
CHART - ICAO

AD ELEV 288 ft  
TRANSITION ALTITUDE BY ATC  
HEIGHTS RELATED TO  
THR RWY 01 - ELEV 252 ft

ATIS 132.55  
ACC 120.90  
TWR 119.00

EILAT/ILAN &  
ASAF RAMON (LLER)  
RWY 01  
NURIT 1D



CHANGES: Remark at IAF removed.