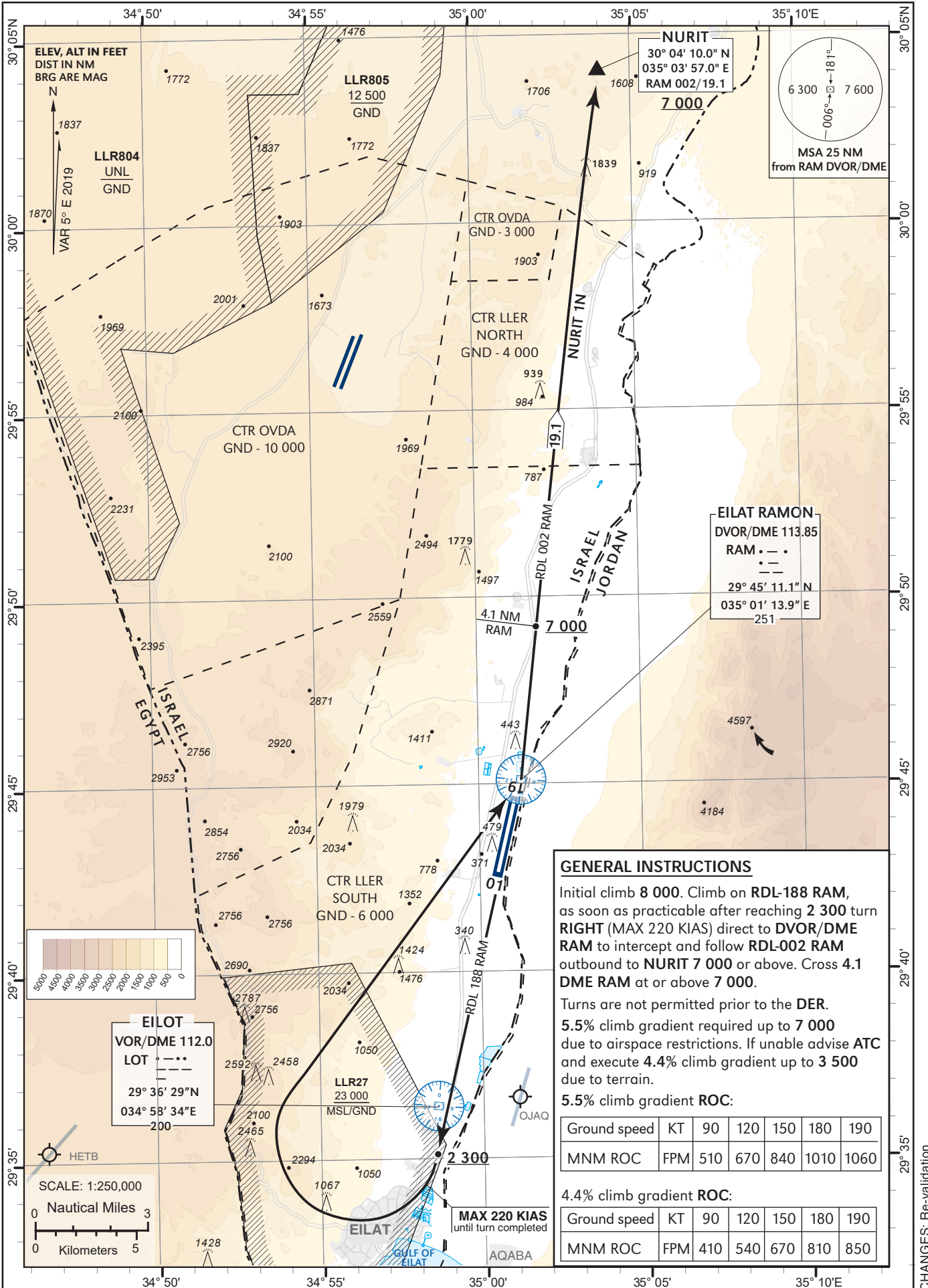


STANDARD
INSTRUMENT
DEPARTURE
CHART (SID) - ICAO

TRANSITION ALTITUDE BY ATC

ATIS 132.55
TWR 119.00
ACC 120.90

EILAT/ILAN &
ASAF RAMON (LLER)
RWY 19
NURIT 1N



NURIT
30° 04' 10.0" N
035° 03' 57.0" E
RAM 002/19.1
7 000

MSA 25 NM
from RAM DVOR/DME

EILAT RAMON
DVOR/DME 113.85
RAM . . .
29° 45' 11.1" N
035° 01' 13.9" E
251

GENERAL INSTRUCTIONS

Initial climb 8 000. Climb on RDL-188 RAM, as soon as practicable after reaching 2 300 turn **RIGHT** (MAX 220 KIAS) direct to DVOR/DME RAM to intercept and follow RDL-002 RAM outbound to NURIT 7 000 or above. Cross 4.1 DME RAM at or above 7 000.

Turns are not permitted prior to the DER.

5.5% climb gradient required up to 7 000 due to airspace restrictions. If unable advise ATC and execute 4.4% climb gradient up to 3 500 due to terrain.

5.5% climb gradient ROC:

Ground speed	KT	90	120	150	180	190
MNM ROC	FPM	510	670	840	1010	1060

4.4% climb gradient ROC:

Ground speed	KT	90	120	150	180	190
MNM ROC	FPM	410	540	670	810	850

CHANGES: Re-validation