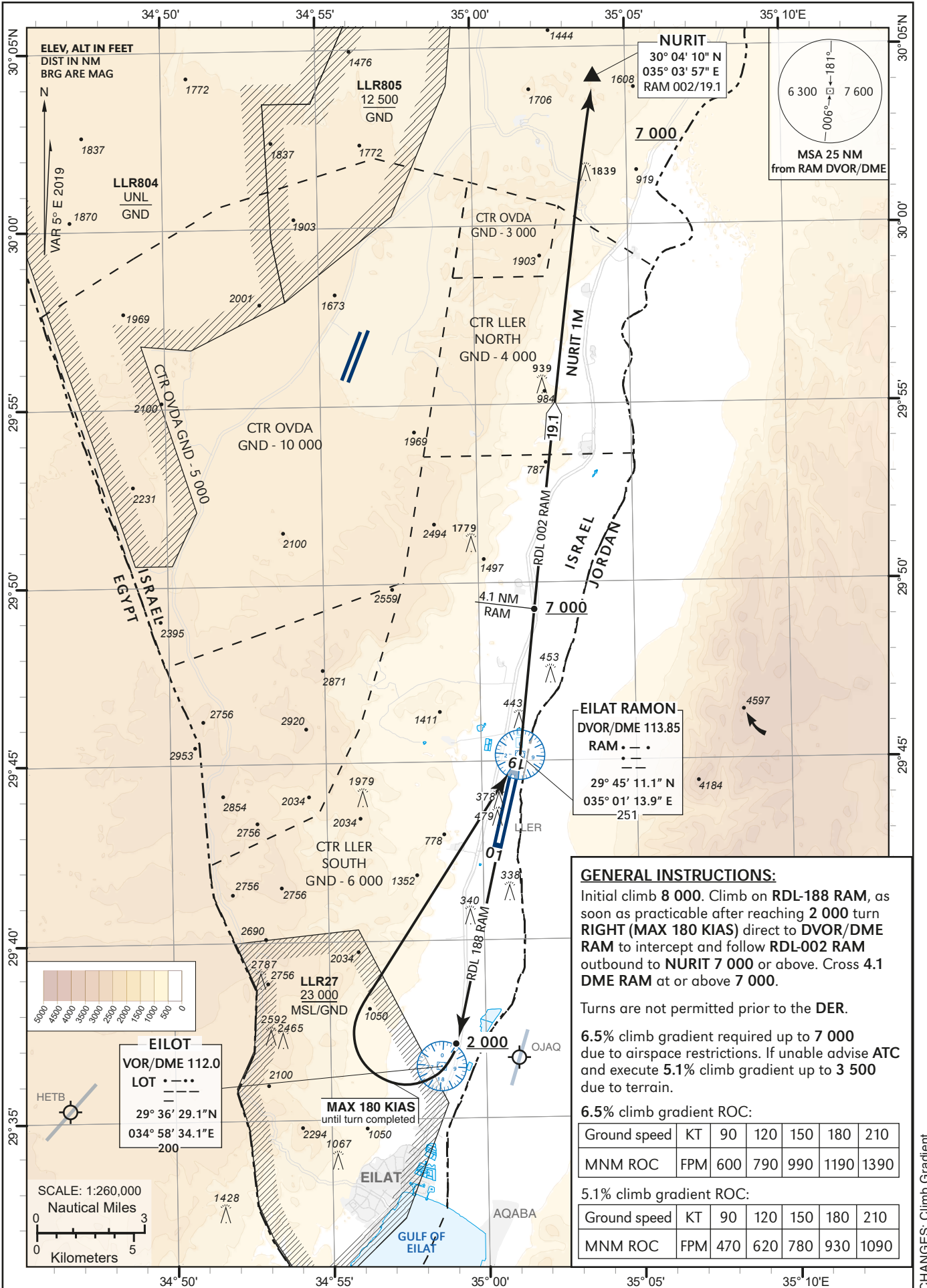


**STANDARD
INSTRUMENT
DEPARTURE
CHART (SID) - ICAO**

TRANSITION ALTITUDE BY ATC

**ATIS 132.55
TWR 119.00
ACC 120.90**

**EILAT/ILAN &
ASAF RAMON (LLER)
RWY 19
NURIT 1M
CAT A,B,C**



GENERAL INSTRUCTIONS:

Initial climb 8 000. Climb on RDL-188 RAM, as soon as practicable after reaching 2 000 turn **RIGHT (MAX 180 KIAS)** direct to DVOR/DME RAM to intercept and follow RDL-002 RAM outbound to NURIT 7 000 or above. Cross 4.1 DME RAM at or above 7 000.

Turns are not permitted prior to the DER.

6.5% climb gradient required up to 7 000 due to airspace restrictions. If unable advise ATC and execute 5.1% climb gradient up to 3 500 due to terrain.

6.5% climb gradient ROC:

Ground speed	KT	90	120	150	180	210
MNM ROC	FPM	600	790	990	1190	1390

5.1% climb gradient ROC:

Ground speed	KT	90	120	150	180	210
MNM ROC	FPM	470	620	780	930	1090

CHANGES: Climb Gradient