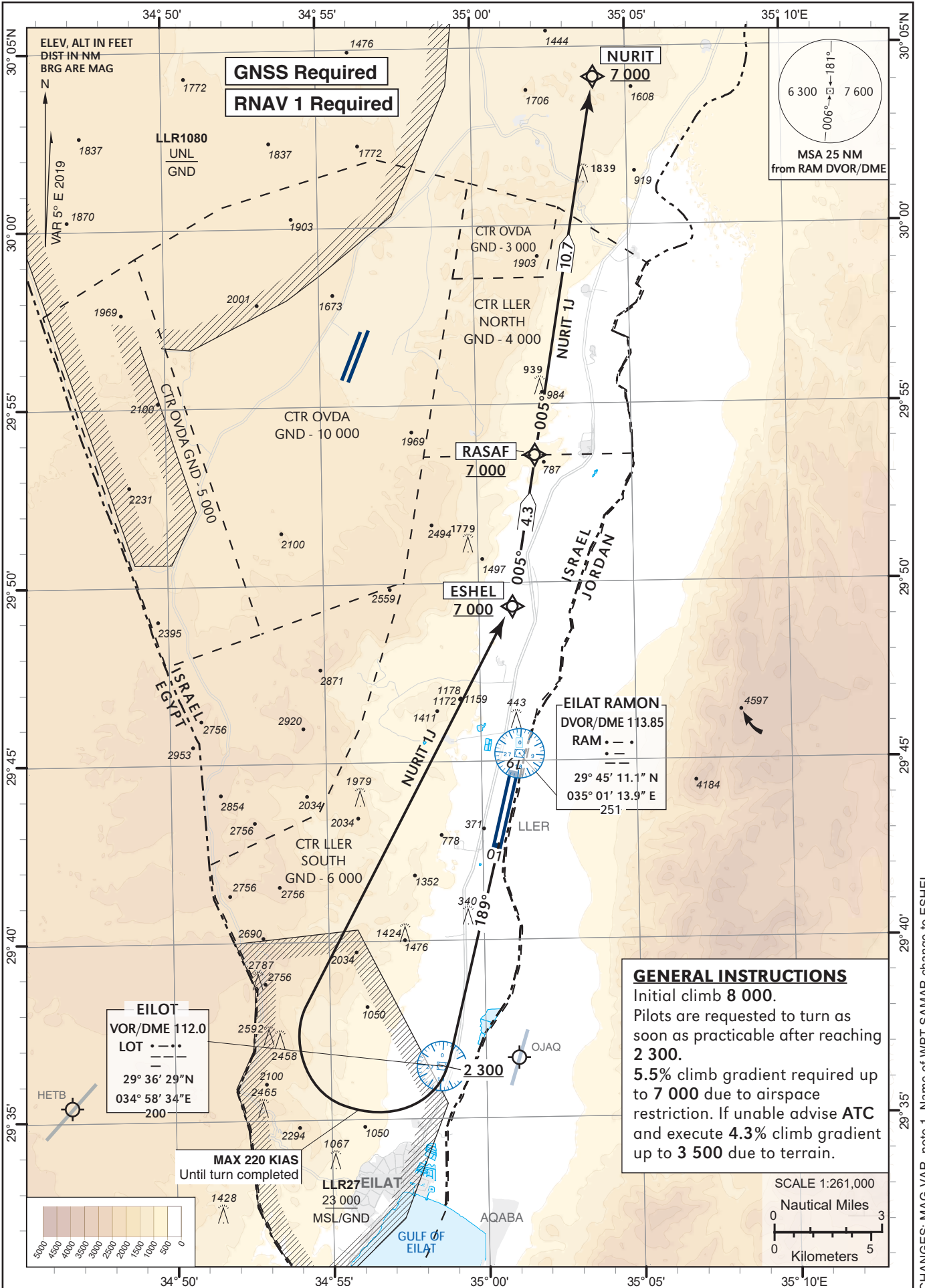


**STANDARD INSTRUMENT  
DEPARTURE CHART  
(SID) - ICAO**

TRANSITION ALTITUDE BY ATC

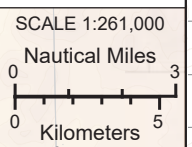
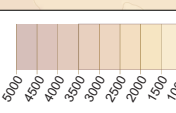
ATIS	132.55
TWR	119.00
ACC	120.90

**EILAT / ILAN &  
ASAF RAMON (LLER)  
RWY 19  
NURIT 1J**



**EILAT**  
VOR/DME 112.0  
LOT  
29° 36' 29" N  
034° 58' 34" E  
200

**GENERAL INSTRUCTIONS**  
Initial climb 8 000.  
Pilots are requested to turn as soon as practicable after reaching 2 300.  
5.5% climb gradient required up to 7 000 due to airspace restriction. If unable advise ATC and execute 4.3% climb gradient up to 3 500 due to terrain.



CHANGES: MAG VAR, note 1, Name of WPT SAMAR change to ESHEL.

NURIT1J RWY 19

Navigation Specification	Path Descriptor (Recommended)	Waypoint Identifier	Latitude Longitude	Fly-Over	Course/Track M° (T°)	Distance (NM)	Turn Direction	Altitude (ft)	Speed (Kts)	Remarks
RNAV1	CA			-	189 (193.7)			+2 300	-220	
RNAV1	DF	ESHEL	29° 49' 20"N 035° 01' 04" E	-			R	+7 000	-220	
RNAV1	TF	RASAF	29° 53' 35"N 035° 01' 53" E	-	005 (009.6)	4.3	L	+7 000		
RNAV1	TF	NURIT	30° 04' 10"N 035° 03' 57" E		005 (009.6)	10.7		+7 000		