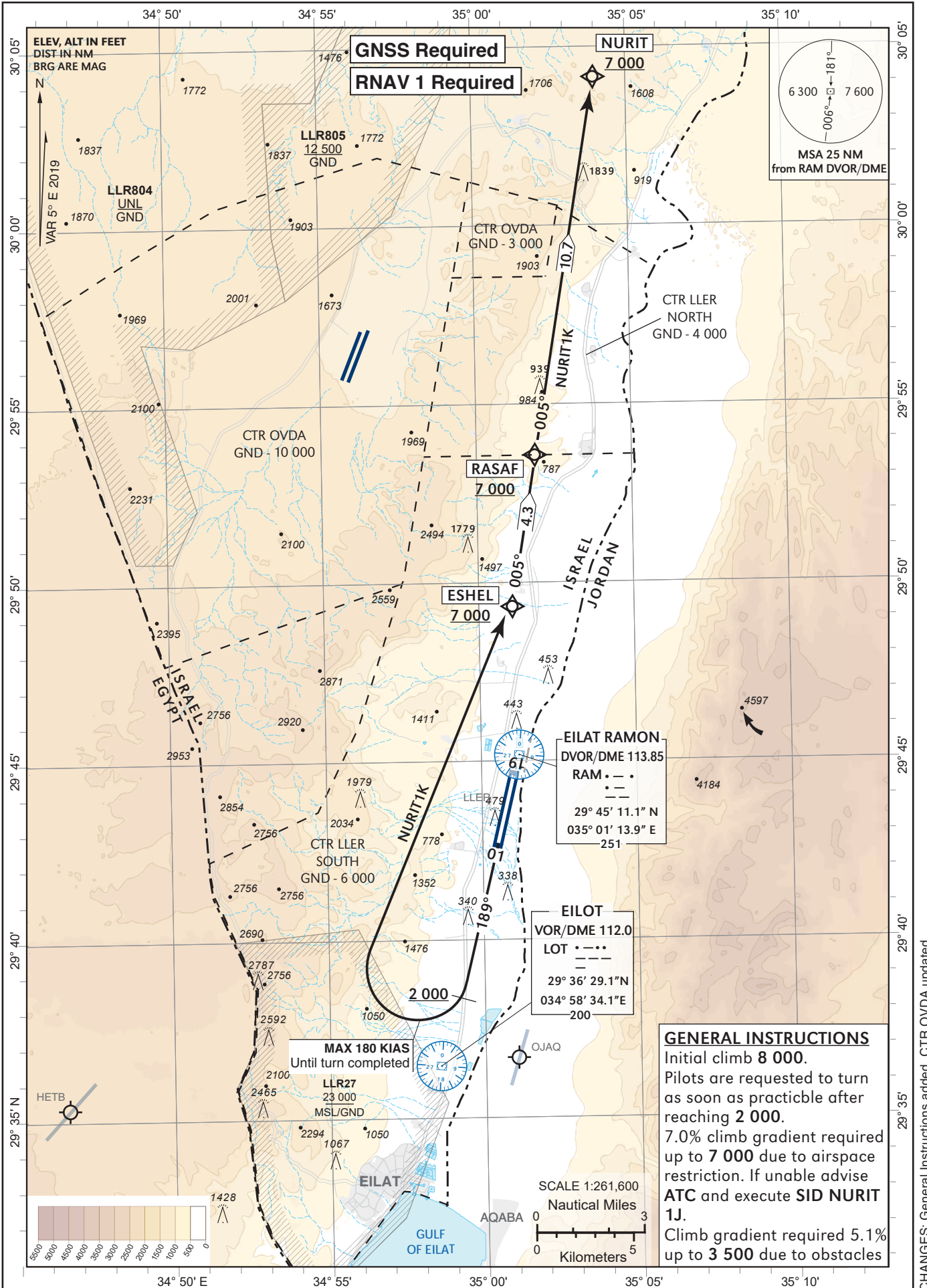


STANDARD INSTRUMENT  
DEPARTURE  
CHART (SID) - ICAO

TRANSITION ALTITUDE BY ATC

ATIS	132.55
TWR	119.00
ACC	120.90

EILAT/ILAN &  
ASAF RAMON (LLER)  
RWY 19  
NURIT1K  
CAT A,B,C



**GENERAL INSTRUCTIONS**  
 Initial climb 8 000.  
 Pilots are requested to turn as soon as practicable after reaching 2 000.  
 7.0% climb gradient required up to 7 000 due to airspace restriction. If unable advise ATC and execute SID NURIT 1J.  
 Climb gradient required 5.1% up to 3 500 due to obstacles

CHANGES: General Instructions added, CTR OVDA updated

LLER NURIT1K RWY 19

Navigation Specification	Path Descriptor (Recommended)	Waypoint Identifier	Lat./Long	Flyover	Course/Track M° (T°)	Distance (NM)	Turn Direction	Altitude (ft)	Speed (Kts)	Remarks
RNAV1	CA				189 (193.7)			+2 000	- 180	
RNAV1	DF	ESHEL	29° 49' 20" N 035° 01' 04" E				R	+7 000	- 180	
RNAV1	TF	RASAF	29° 53' 35" N 035° 01' 53" E		005 (009.6)	4.3	L	+7 000		
RNAV1	TF	NURIT	30° 04' 10" N 035° 03' 57" E		005 (009.6)	10.7		+7 000		