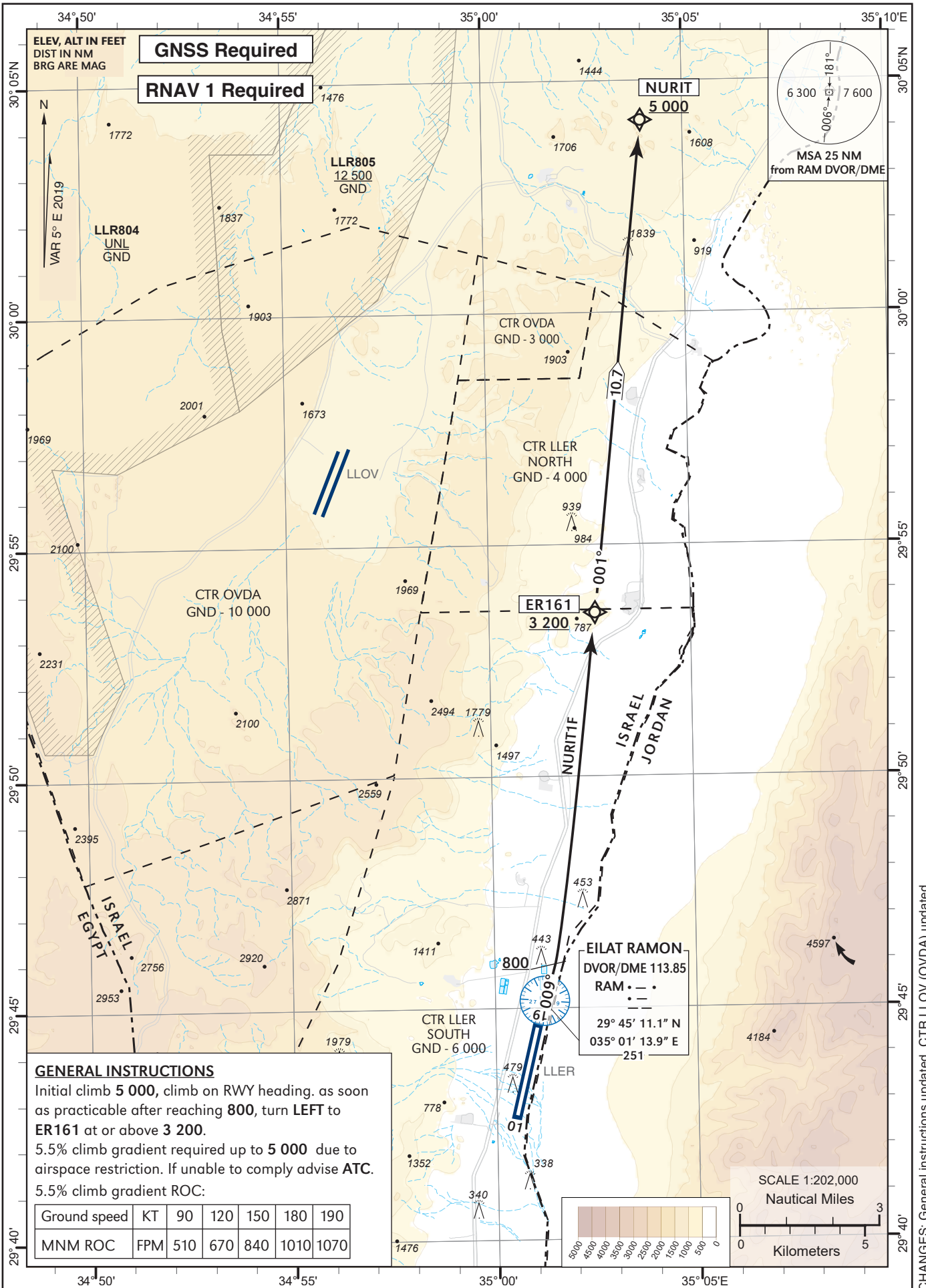


STANDARD INSTRUMENT
DEPARTURE CHART
(SID) - ICAO

TRANSITION ALTITUDE BY ATC

ATIS 132.55
TWR 119.00
ACC 120.90

EILAT / ILAN &
ASAF RAMON (LLR)
RWY 01
NURIT1F



GENERAL INSTRUCTIONS

Initial climb 5 000, climb on RWY heading, as soon as practicable after reaching 800, turn LEFT to ER161 at or above 3 200.
5.5% climb gradient required up to 5 000 due to airspace restriction. If unable to comply advise ATC.
5.5% climb gradient ROC:

Ground speed	KT	90	120	150	180	190
MNM ROC	FPM	510	670	840	1010	1070

NURIT1F RWY 01

Navigation Specification	Path Descriptor (Recommended)	Waypoint Identifier	Latitude Longitude	Fly-Over	Course/Track M° (T°)	Distance (NM)	Turn Direction	Altitude (ft)	Speed (Kts)	Remarks
RNAV1	CA				009 (013.7)			+800		
RNAV1	DF	ER161	29° 53' 31"N 035° 02' 37" E					+3 200		
RNAV1	TF	NURIT	30° 04' 10"N 035° 03' 57" E		001 (006.2)	10.7		+5 000		