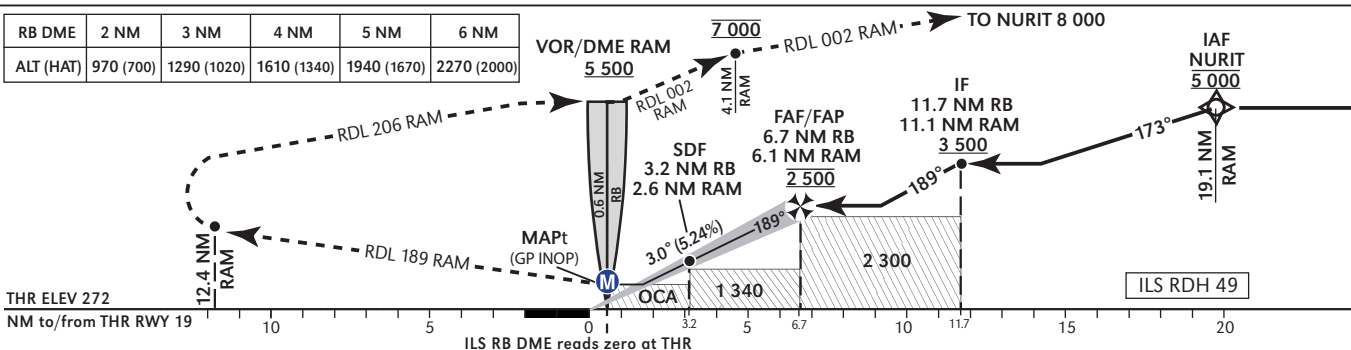
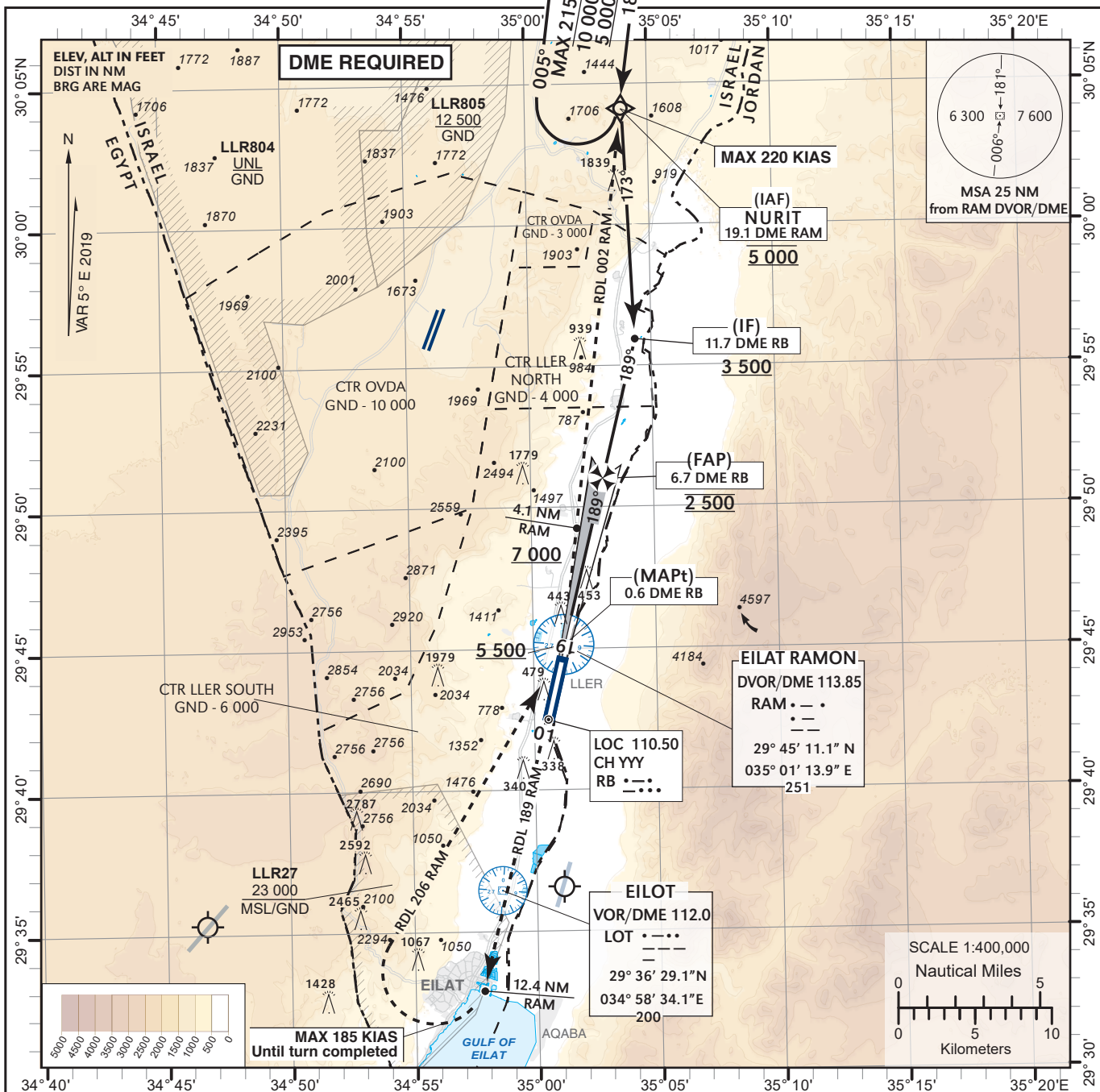


**INSTRUMENT APPROACH CHART - ICAO** AD ELEV **288 ft**  
HEIGHTS RELATED TO THR RWY 19 - ELEV **272 ft**

TA BY ATC  
ATIS 132.55  
ACC 120.90  
TWR 119.00

**EILAT/ILAN & ASAF RAMON (LLER)  
ILS RWY 19**



CHANGES: Profile updated, OCA updated, chart numbering

LLER ILS/LOC only RWY 19

Significant Point	Latitude Longitude	True Azimut (Reference)	DME distance	Speed (Kts)
NURIT (IAF)	30° 04' 10.0"N 035° 03' 57.0" E		19.08 DME RAM	-220
IF	29° 55' 59.1"N 035° 04' 18.5" E	13.72° (LOC 19)	11.72 DME RB* 11.1 DME RAM	
FAF/ FAP	29° 51' 07.0"N 035° 02' 56.5" E	13.72° (LOC 19)	6.72 DME RB* 6.1 DME RAM	
MAPt GP INOP	29° 45' 09.7"N 035° 01' 16.4" E		0.6 DME RB*	

\* 0 at THR

Precision Final Approach - Descent angle (Slope)	3.00° (5.24%)
Non Precision Final Approach - Slope (Descent angle)	5.32° (3.05%)

NURIT HOLDING IDENTIFICATION

Holding Fix	Latitude Longitude	Inbound Course/Track M° (T°)	MAX IAS (Kts)	Altitude (ft)	Outbound Time / Distance	Turn Direction
NURIT	30° 04' 10"N 035° 03' 57" E	185 (190.2)	215	-10 000 +5 000	1 Min	R