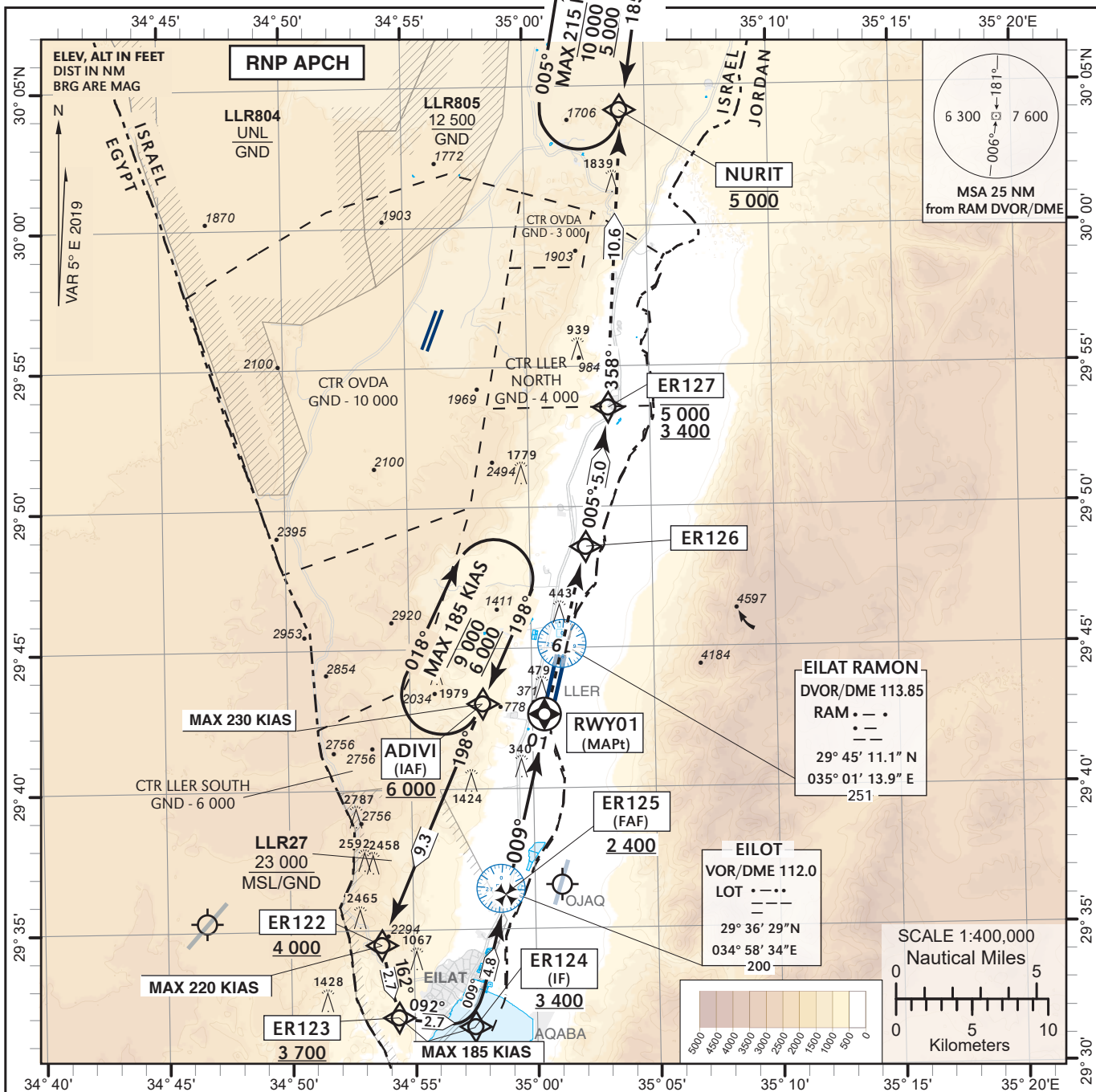


INSTRUMENT APPROACH CHART - ICAO AD ELEV **288 ft** TA BY ATC
 HEIGHTS RELATED TO THR RWY 01 - ELEV **252 ft**

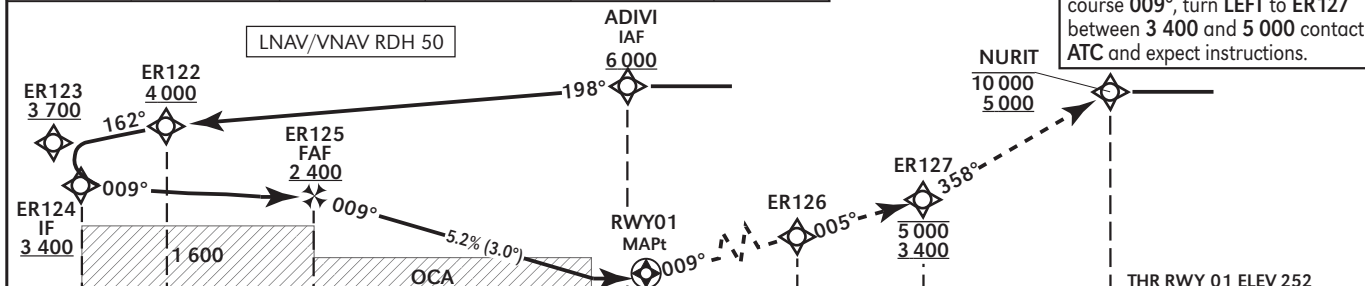
ATIS **132.55**
 ACC **120.90**
 TWR **119.00**

**EILAT/ILAN & ASAF RAMON (LLER)
 RNP RWY 01**



RWY 01	6 NM	5 NM	4 NM	3 NM	2 NM
ALT (HAT)	2 210 (1 958)	1 900 (1 650)	1 580 (1 328)	1 260 (1 008)	940 (688)

MISSED APPROACH:
 Initial climb 5 000, to ER126 on course 009°, turn LEFT to ER127 between 3 400 and 5 000 contact ATC and expect instructions.



OCA (H)		A	B	C	D	Circling		N/A	
LNAV	2.5%	810 (560)							
	4.5%	730 (480)							
LNAV/VNAV*	2.5%	640 (390)	640 (390)	640 (390)	670 (420)	GS	KT	80	100
* BARO-VNAV Temperature MNM -10C/MAX 60 C						ROD: 5.2%	ft/min	424	531
								120	140
								160	180
								637	743
								849	955

CAA

AMENDMENT 4/22

CHANGES: OCA (H) changed.

RNP RWY 01

Navigation Specification	Path Descriptor (Recommended)	Waypoint Identifier	Latitude Longitude	Fly-Over	Course/Track M° (T°)	Distance (NM)	Turn Direction	Altitude (ft)	Speed (Kts)	Remarks
RNAV1	IF	ADIVI	29° 43' 05"N 034° 57' 57" E					+6 000	-230	IAF
RNAV1	TF	ER122	29° 34' 31"N 034° 53' 42" E		198 (203.3)	9.3		+4 000	-220	
RNAV1	TF	ER123	29° 31' 56"N 034° 54' 22" E		162 (167.4)	2.7	L	+3 700	-185	
RNAV1	TF	ER124	29° 31' 35"N 034° 57' 29" E		092 (097.4)	2.7	L	+3 400	-185	IF
RNP APCH	TF	ER125	29° 36' 16.0"N 034° 58' 47.1" E		009 (013.7)	4.8	L	+2 400		FAF
RNP APCH	CF	RWY01	29° 42' 41.00"N 035° 00' 34.80" E	Y	009 (013.7)			+302		MAPt

Non Precision Final Approach – Slope (Descent angle)	5.24% (3.0°)
--	-----------------

STANDARD MISSED APPROACH

Navigation Specification	Path Descriptor (Recommended)	Waypoint Identifier	Latitude Longitude	Fly-Over	Course/Track M° (T°)	Distance (NM)	Turn Direction	Altitude (ft)	Speed (Kts)	Remarks
RNAV1	TF	ER126	29° 48' 37"N 035° 02' 15" E		009 (013.7)					
RNAV1	TF	ER127	29° 53' 35"N 035° 03' 16" E		005 (110.1)	5.0		-5 000 +3 400		
RNAV1	TF	NURIT	30° 04' 10"N 035° 03' 57" E		358 (003.2)	10.6		@5 000		
RNAV1	HM	NURIT	30° 04' 10"N 035° 03' 57" E	Y	185 (190.2)		R	-10 000 +5 000	-215	

HOLDING IDENTIFICATION

Holding Fix	Latitude Longitude	Inbound Course/Track M° (T°)	MAX IAS (Kts)	Altitude (ft)	Outbound Time / Distance	Turn Direction
NURIT	30° 04' 10"N 035° 03' 57" E	185 (190.2)	215	-10 000 +5 000	1 Min	R
ADIVI	29° 43' 05"N 034° 57' 57" E	198 (203.5)	185	-9 000 +6 000	1 Min	R