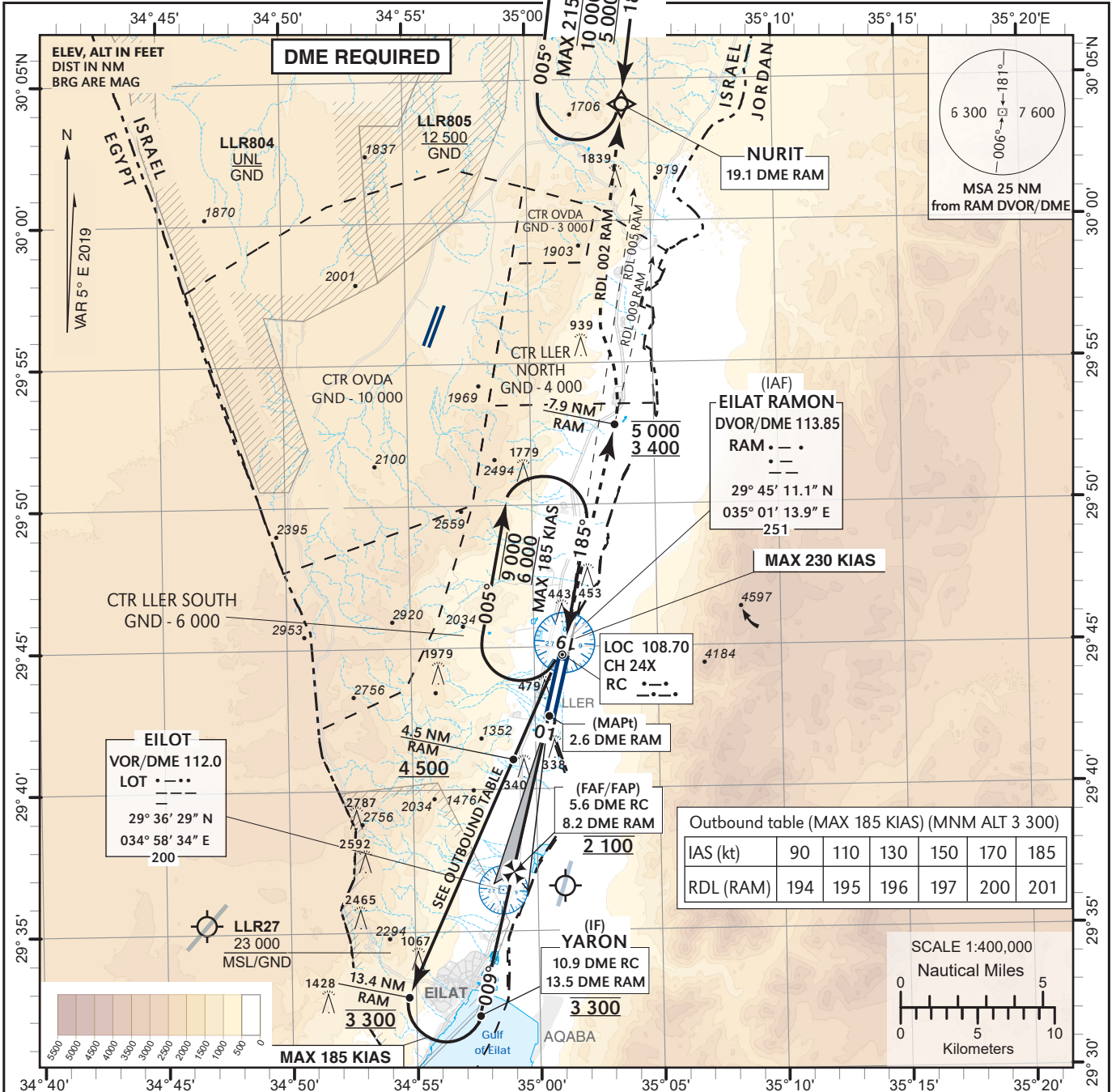


**INSTRUMENT APPROACH CHART - ICAO** AD ELEV **288 ft**  
HEIGHTS RELATED TO THR RWY 01 - ELEV **252 ft**

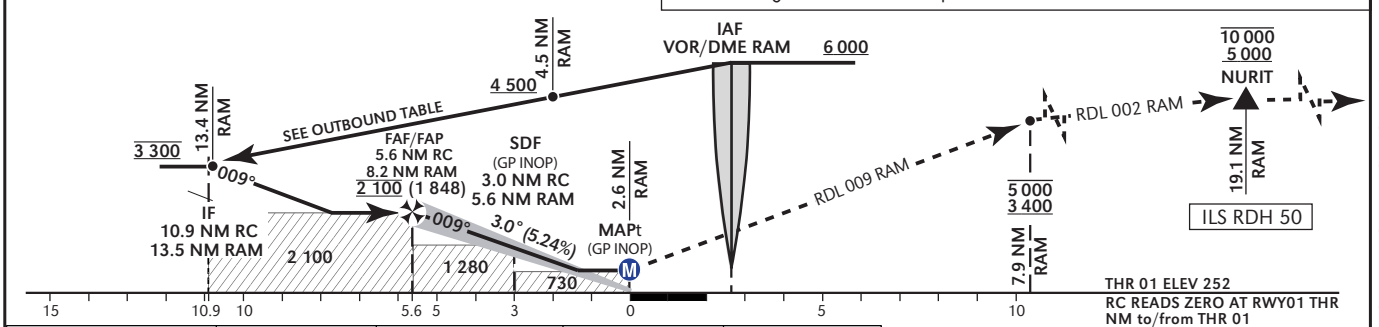
TA BY ATC  
ATIS **132.55**  
ACC **120.90**  
TWR **119.00**

**EILAT/ILAN &  
ASAF RAMON (LLER)**  
ILS RWY 01



ILS DME (RC)	5 NM	4 NM	3 NM	2 NM	1 NM
ALT (HAT)	1920 (1670)	1590 (1340)	1270 (1020)	950 (700)	620 (370)

**MISSED APPROACH:** Initial climb 5 000, climb on RWY heading to intercept and follow RDL-009 RAM outbound to 7.9 DME RAM at 3 400 MNM & 5 000 MAX, contact ATC and expect instructions. 7.9 DME RAM at 3 400 requires a 5.1% climb gradient due to airspace restrictions. If unable contact ATC.



<b>OCA (OCH)</b>	A	B	C	D
ILS CATI 5%	426 (174)	438 (186)	446 (194)	456 (204)
ILS CATI 2.5%		516 (264)		
GP INOP		730 (478)		
CIRCLING	N/A			

<b>GS</b>	KT	80	100	120	140	160	180
<b>ROD: 5.2%</b>	ft/min	425	531	637	743	849	955

CHANGES: OCA/H table, CTR LLOY (OVDA) updated

LLER ILS RWY 01

Significant Point	Latitude Longitude	True Azimut (Reference)	DME distance
RAM VOR/DME (IAF)	29° 45' 11.1"N 035° 01' 13.9" E		
YARON (IF)	29° 32' 04.1"N 034° 57' 36.9" E	193.73° (LOC01)	10.90 DME RC* 13.46 DME RAM
FAF	29° 37' 16.1"N 034° 59' 0.40" E	193.73° (LOC01)	5.56 DME RC* 8.2 DME RAM
MAPt (GP INOP)	29° 42' 41.0"N 035° 00' 34.8" E		2.60 DME RAM
NURIT	30° 04' 10.0"N 035° 03' 57.0" E	007.10° (RAM)	19.08 DME RAM

\* 0 at THR

Precision Final Approach - Descent angle (Slope)	3.00° (5.24%)
Non Precision Final Approach – Slope (Descent angle)	5.32% (3.05°)

HOLDING IDENTIFICATION

Holding Fix	Latitude Longitude	Inbound Course/Track M° (T°)	MAX IAS (Kts)	Altitude (ft)	Outbound Time / Distance	Turn Direction
RAM	29° 45' 11"N 035° 01' 14" E	185 (190.1)	185	-9 000 +6 000	1 Min	R
NURIT	30° 04' 10"N 035° 03' 57" E	185 (190.2)	215	-10 000 +5 000	1 Min	R