

AERODROME  
CHART - ICAO

29° 43' 38" N  
035° 00' 51" E

AD ELEV 288 ft

TWR 119.00  
GND 121.70

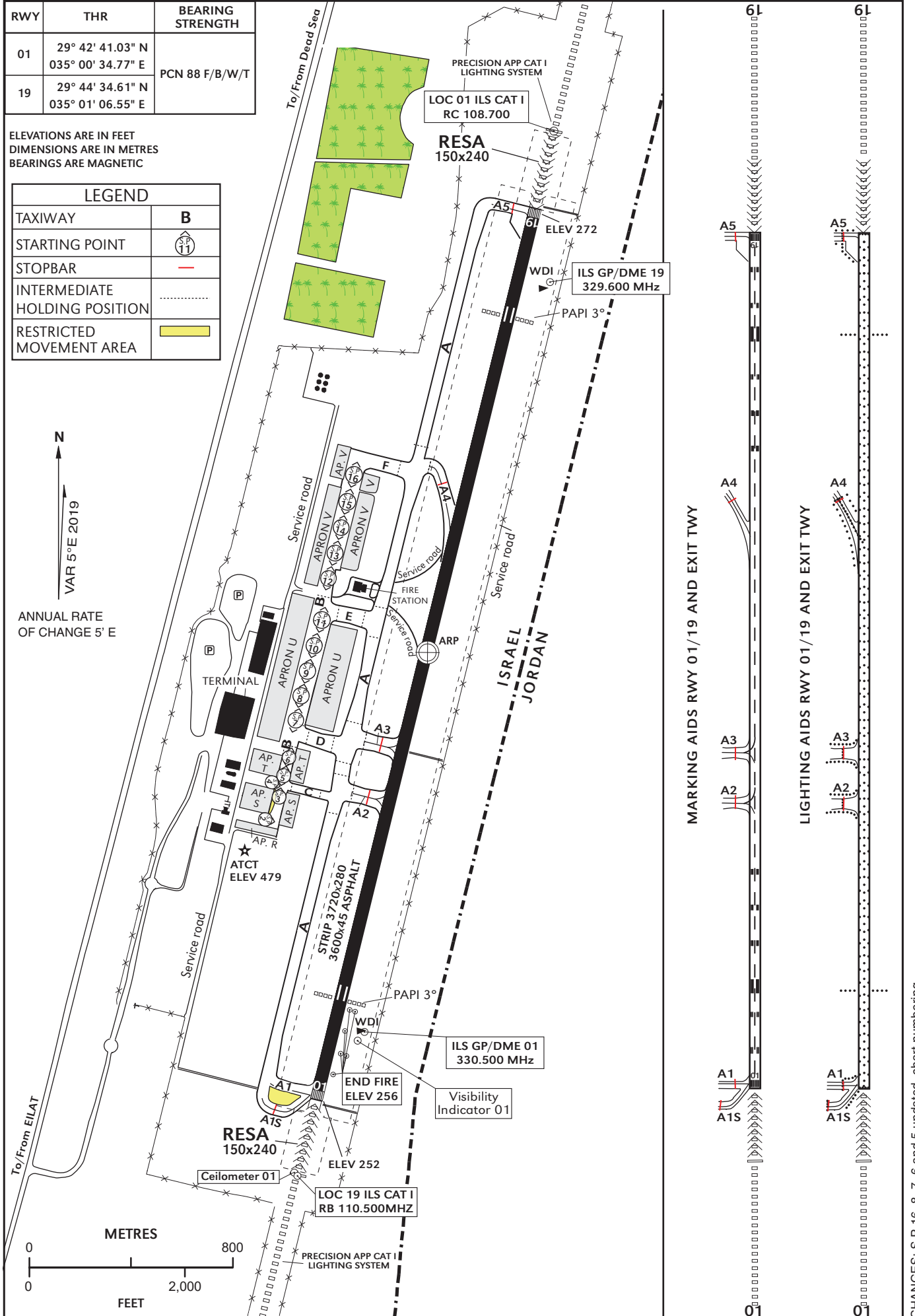
EILAT / ILAN &  
ASAF RAMON (LLER)

RWY	THR	BEARING STRENGTH
01	29° 42' 41.03" N 035° 00' 34.77" E	PCN 88 F/B/W/T
19	29° 44' 34.61" N 035° 01' 06.55" E	

ELEVATIONS ARE IN FEET  
DIMENSIONS ARE IN METRES  
BEARINGS ARE MAGNETIC

LEGEND	
TAXIWAY	B
STARTING POINT	
STOPBAR	
INTERMEDIATE HOLDING POSITION	
RESTRICTED MOVEMENT AREA	

N  
VAR 5°E 2019  
ANNUAL RATE  
OF CHANGE 5' E



MARKING AIDS RWY 01/19 AND EXIT TWY

LIGHTING AIDS RWY 01/19 AND EXIT TWY