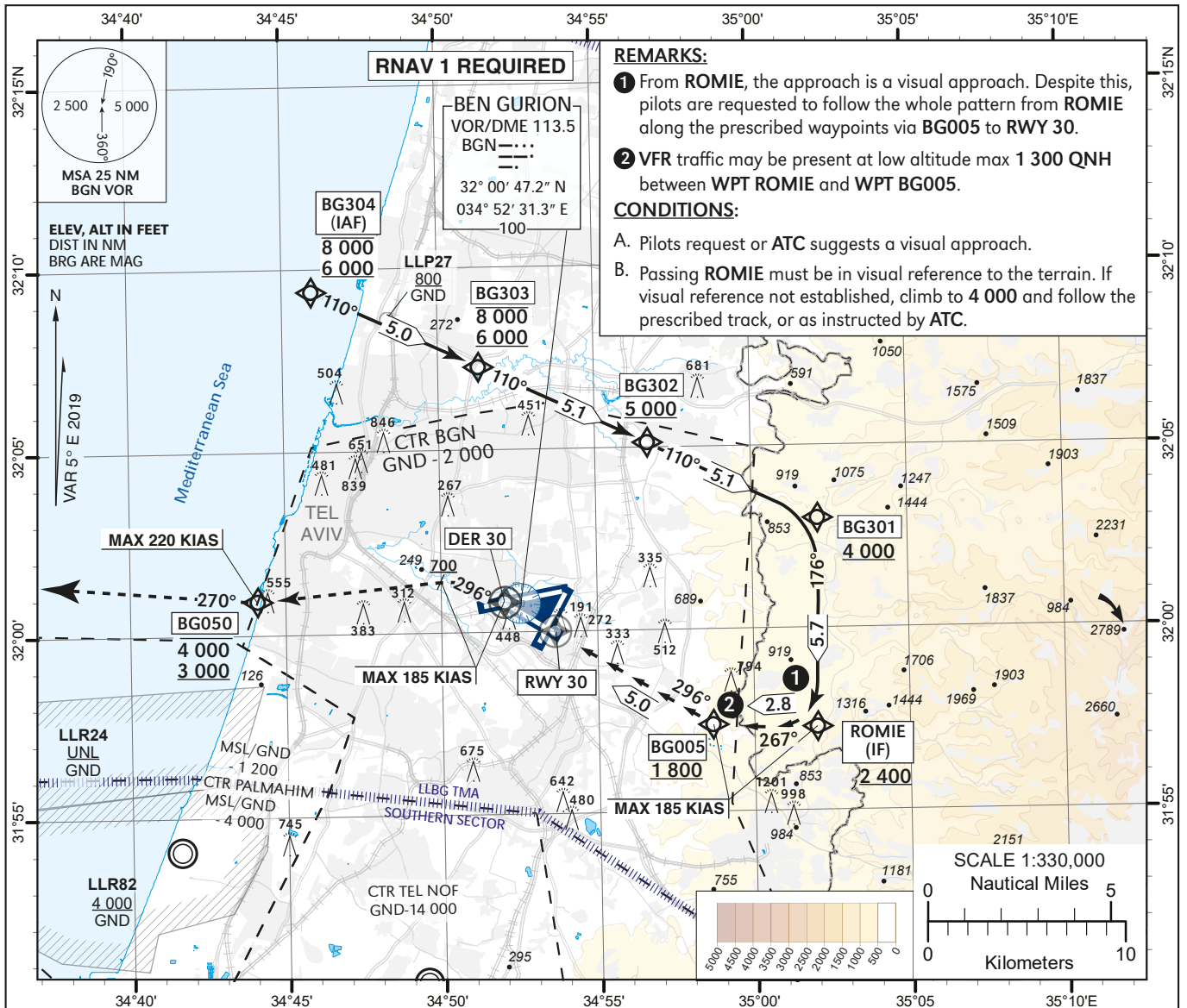


**VISUAL  
APPROACH CHART**  
(with prescribed RNAV track)

AERODROME ELEV **134 ft**  
HEIGHTS RELATED TO  
THR RWY 30 - ELEV **130 ft**

ATIS Arrival	132.50
ARR	131.10
APP	120.50
TWR	134.60

**TEL-AVIV / BEN-GURION  
(LLBG)  
ROMIE APPROACH RWY 30**



**REMARKS:**

- From ROMIE, the approach is a visual approach. Despite this, pilots are requested to follow the whole pattern from ROMIE along the prescribed waypoints via BG005 to RWY 30.
- VFR traffic may be present at low altitude max 1 300 QNH between WPT ROMIE and WPT BG005.

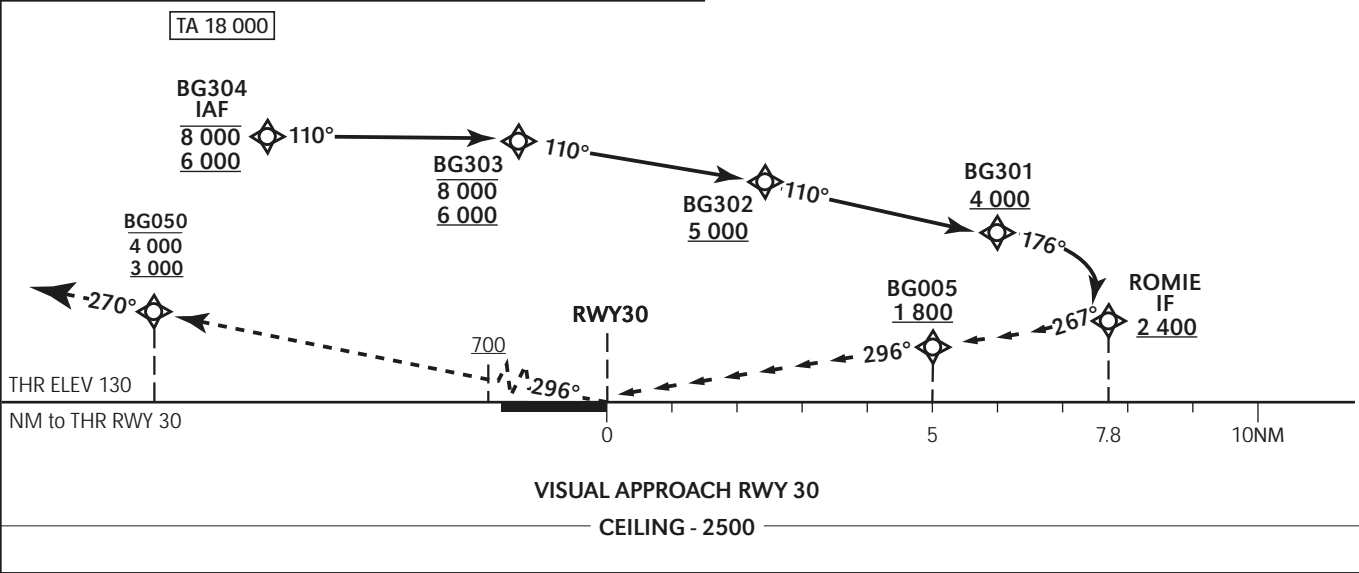
**CONDITIONS:**

- Pilots request or ATC suggests a visual approach.
- Passing ROMIE must be in visual reference to the terrain. If visual reference not established, climb to 4 000 and follow the prescribed track, or as instructed by ATC.

**GO AROUND ON THE VISUAL SEGMENT OF THE APPROACH:**  
Initial climb 4 000. Climb on course 296°. At or above 700 (MAX 185 KIAS), turn LEFT direct to BG050 BTN 3 000 and 4 000 (MAX 220 KIAS). Continue on track 270°, contact ATC and expect instructions.

**Recommended crossing altitudes**

RWY30	2	3	4	5
ALT (HGT)	860 (730)	1 200 (1 070)	1 540 (1 410)	1 880 (1 750)



LLBG - ROMIE VISUAL RNAV RWY 30

Navigation Specification	Path Descriptor (Recommended)	Waypoint Identifier	Latitude Longitude	Flyover	Course/Track M° (T°)	Distance (NM)	Turn Direction	Altitude (ft)	Speed (Kts)	Remarks
RNAV 1	IF	BG304	32° 09' 24"N 034° 45' 58" E					-8 000 +6 000		IAF
RNAV 1	TF	BG303	32° 07' 17.7"N 034° 51' 18" E		110 (114.8)	5.0		-8 000 +6 000		
RNAV 1	TF	BG302	32° 05' 09.5"N 034° 56' 42" E		110 (114.8)	5.1		+5 000		
RNAV 1	TF	BG301	32° 03' 00.9"N 035° 02' 06" E		110 (114.8)	5.1		+4 000		
RNAV 1	TF	ROMIE	31° 57' 18.5"N 035° 02' 00.7" E		176 (180.8)	5.7	R	+2 400	-185	IF
RNAV 1	TF	BG005	31° 57' 23.3"N 34° 58' 40.2" E		267 (271.6)	2.8	R	+1 800		
RNAV 1	TF	RWY30	31° 59' 59.88"N 034° 53' 39.12" E	Y	296 (301.4)	5.0	R	+180		

Go Around

Navigation Specification	Path Descriptor (Recommended)	Waypoint Identifier	Latitude Longitude	Flyover	Course/Track M° (T°)	Distance (NM)	Turn Direction	Altitude (ft)	Speed (Kts)	Remarks
RNAV 1	TF	DER30	32° 00' 51.14"N 034° 52' 00.56" E	Y	296 (301.4)	1.7		+700	-185	
RNAV 1	CA				296 (301.4)			+700	-185	
RNAV 1	DF	BG050	32° 00' 55.9" N 034° 44' 05.9" E				L	-4 000 +3 000	-220	
RNAV 1	FM				270 (275.4)		R	+3 000		