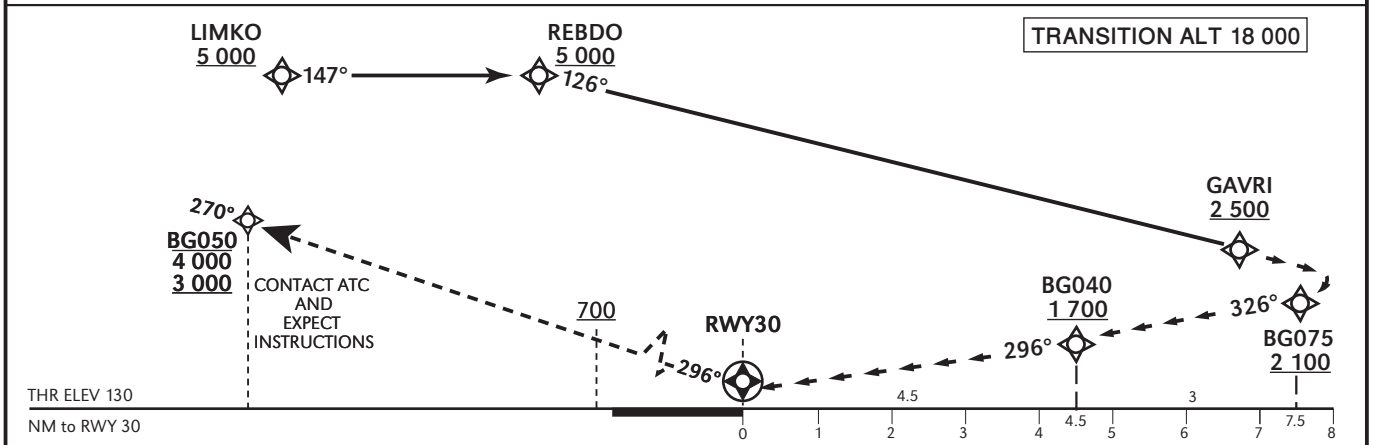
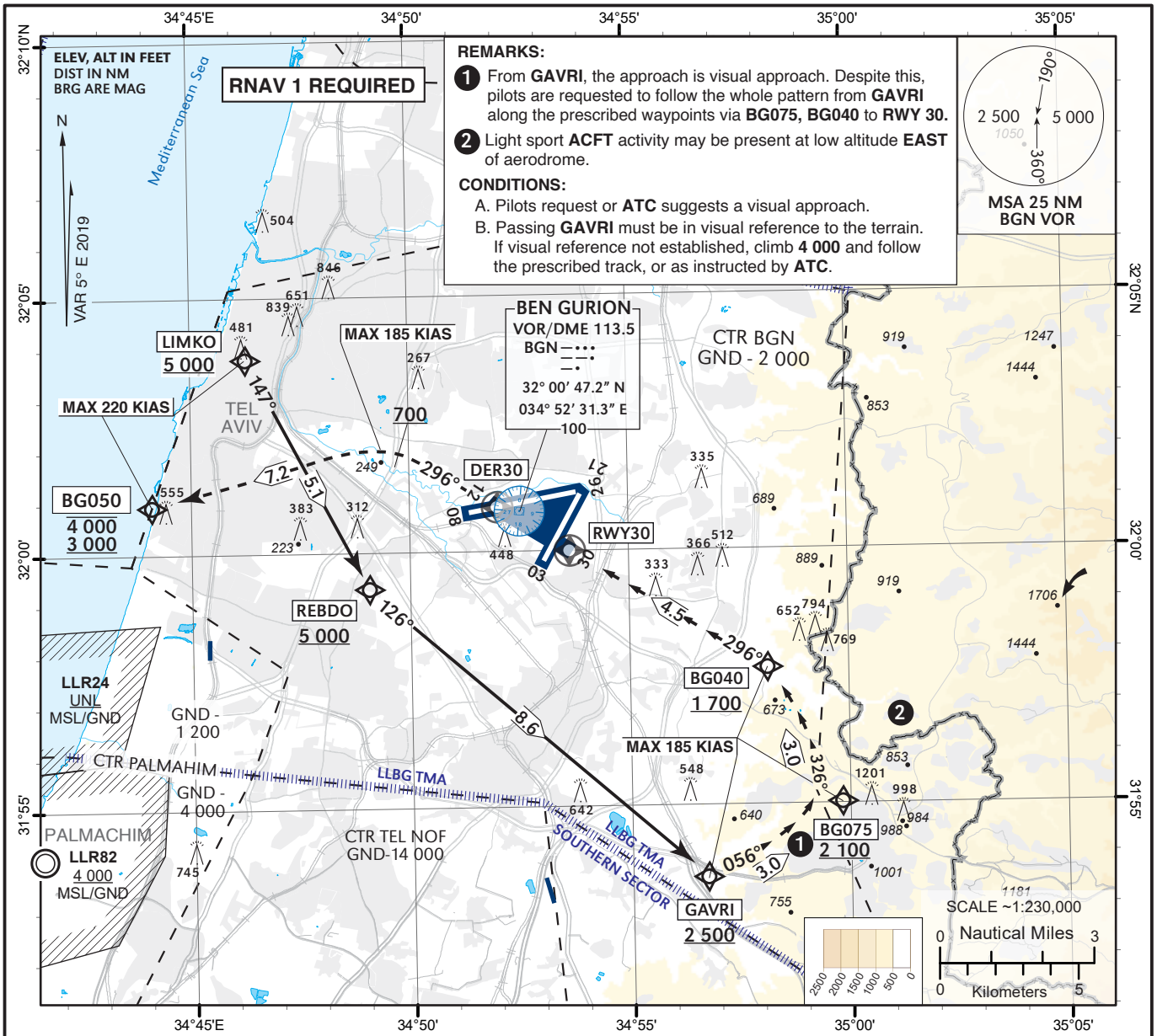


**VISUAL
APPROACH CHART - ICAO
(with prescribed RNAV track)**

**AERODROME ELEV 134 ft
HEIGHTS RELATED TO
THR RWY 30 - ELEV 130 ft**

ATIS Arrival	132.50
APP	120.50
TWR	134.60

**TEL-AVIV / BEN-GURION
(LLBG)
GAVRI APPROACH RWY 30**



GO AROUND ON THE VISUAL SEGMENT OF THE APPROACH:
 Initial climb 4 000. Climb on course 296°, at or above 700 (MAX 185 KIAS). Not before **DER 30**, turn **LEFT** direct to **BG050** (MAX 220 KIAS) BTN 3 000 and 4 000. Continue on track 270° at 4 000, contact **ATC** and expect instructions. **BG050** at 3 000 requires a 5.6% minimum climb gradient due to airspace restrictions. If unable inform **ATC**.

**VISUAL APPROACH RWY 30
CEILING - 3 000**

LLBG - GAVRI VISUAL RNAV RWY 30

Navigation Specification	Path Descriptor (Recommended)	Waypoint Identifier	Latitude Longitude	Fly-Over	Course/Track M° (T°)	Distance (NM)	Turn Direction	Altitude (ft)	Speed (Kts)	Remarks
RNAV1	IF	LIMKO	32° 03' 48.0" N 034° 46' 18.0" E					+5 000	-220	
RNAV1	TF	REBDO	31° 59' 17.0" N 034° 49' 04.0" E		147 (152.4)	5.1		+5 000		
RNAV1	TF	GAVRI	31° 53' 35.1" N 034° 56' 43.6" E		126 (131.1)	8.6	L	+2 500	-185	
RNAV1	TF	BG075	31° 55' 01.3" N 034° 59' 49.3" E		056 (061.4)	3.0	L	+2 100	-185	
RNAV1	TF	BG040	31° 57' 39.8" N 034° 58' 08.2" E		326 (331.4)	3.0	L	+1 700	-185	
RNAV1	TF	RWY30	31° 59' 59.9" N 034° 53' 39.1" E	Y	296 (301.4)	4.5	L	+180	-185	

Go Around

Navigation Specification	Path Descriptor (Recommended)	Waypoint Identifier	Latitude Longitude	Fly-Over	Course/Track M° (T°)	Distance (NM)	Turn Direction	Altitude (ft)	Speed (Kts)	Remarks
RNAV1	TF	DER30	32° 00' 51.1" N 034° 52' 00.6" E	Y	296 (301.4)	1.7		+700	-185	
RNAV1	CA				296 (301.4)			+700	-185	
RNAV1	DF	BG050	32° 00' 55.9" N 034° 44' 05.9" E				L	-4 000 +3 000	-220	
RNAV1	FM	BG050	32° 00' 55.9" N 034° 44' 05.9" E		270 (275.4)		R	-4 000 +3 000		