

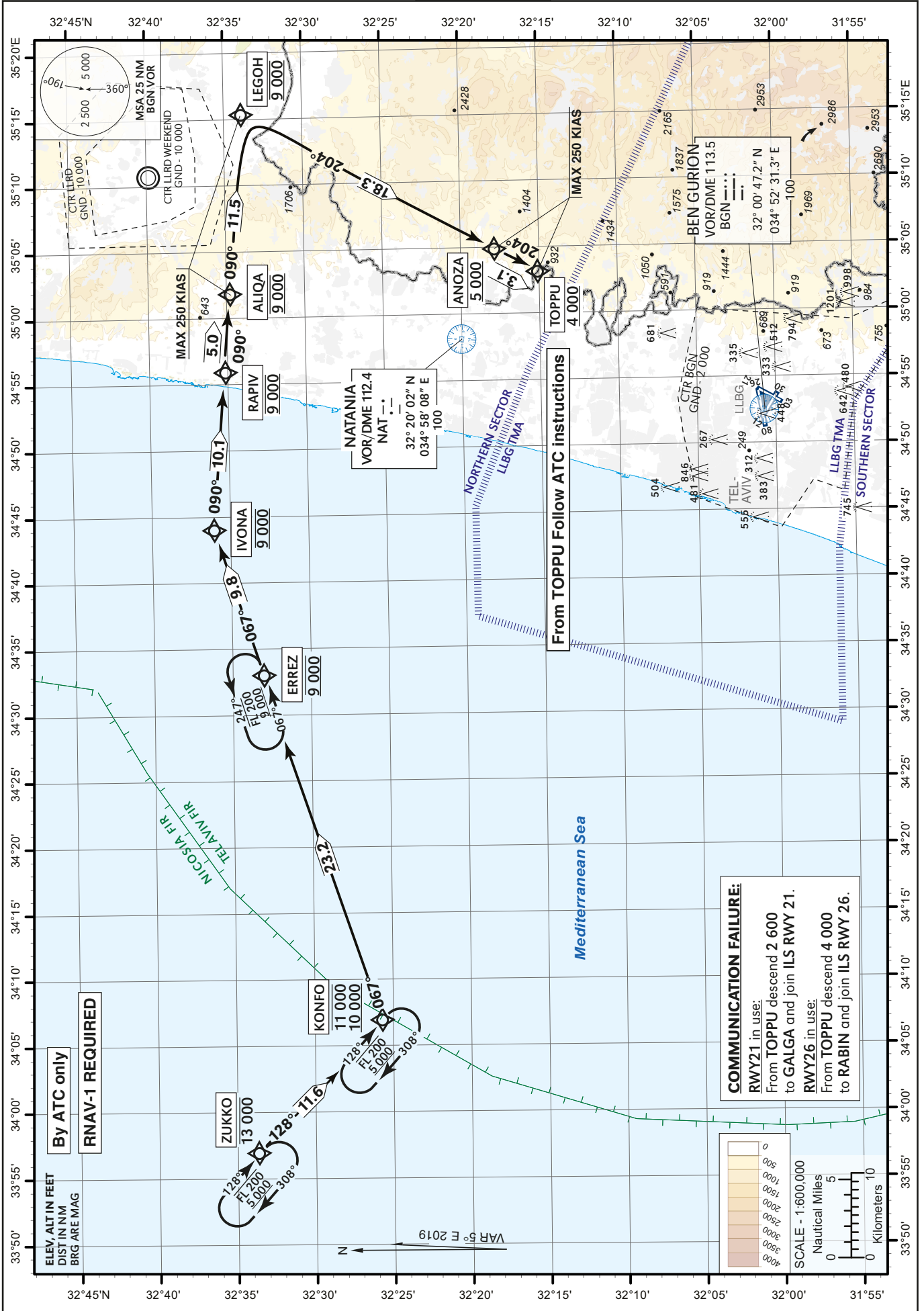
CHART - RNAV
TRANSITION
INSTRUMENT

TRANSITION LVL 200

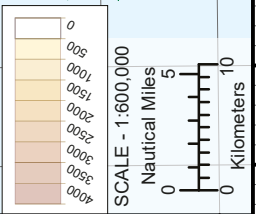
AD ELEV 134 ft

ATIS Arrival	132.50
ACC	121.40
APP	120.50
ARR	131.10
TWR	134.60

TEL-AVIV / BEN-GURION (LLBG)
RWYs 21, 26
ERREZ1A



COMMUNICATION FAILURE:
RWY21 in use:
 From TOPPU descend 2 600 to GALGA and join ILS RWY 21.
RWY26 in use:
 From TOPPU descend 4 000 to RABIN and join ILS RWY 26.



CHANGES: New Chart

ERREZ1A TRANSITION TO RWY 21/26

Navigation specification	Path Descriptor (Recommended)	Waypoint Identifier	Latitude Longitude	Flyover	Course/Track M° (T°)	Distance (NM)	Turn Direction	Altitude (ft)	Speed (Kts)	Remarks
RNAV1	IF	ZUKKO	32° 33' 42" N 033° 56' 57" E					-13 000		
RNAV1	TF	KONFO	32° 25' 42" N 034° 06' 56" E		128 (133.4)	11.6		-11 000 +10 000		
RNAV1	TF	ERREZ	32°33' 01.1" N 034° 32' 59.9" E		067 (071.5)	23.2	L	@9 000		
RNAV1	TF	IVONA	32° 36' 04.3" N 034° 44' 00.0" E		067 (071.8)	9.8		@9 000		
RNAV1	TF	RAPIV	32° 35' 12" N 034° 55' 54" E		090 (094.9)	10.1	R	@9 000		
RNAV1	TF	ALIQA	32° 34' 49.8" N 035° 01' 48.1" E		090 (094.9)	5.0		@9 000	-250	
RNAV1	TF	LEGOH	32° 33' 53.1" N 035° 15' 20.5" E		090 (094.9)	11.5		@9 000	-250	
RNAV1	TF	ANOZA	32° 17' 50.95" N 035° 04' 52.30" E		204 (209.0)	18.3	R	+5 000	-250	
RNAV1	TF	TOPPU	32° 15' 07.8" N 035° 03' 06.5" E		204 (209.0)	3.1		+4 000	-250	

HOLDING IDENTIFICATION

Holding Fix	Latitude Longitude	Inbound Course/Track M° (T°)"	MAX IAS (Kts)	Altitude (ft)	Outbound Time / Distance	Turn Direction
ZUKKO	32° 33' 42" N 033° 56' 57" E	128 (133.4)		-FL 200 +5 000	1 MIN	R
KONFO	32° 25' 42" N 034° 06' 56" E	128 (133.4)		-FL 200 +5 000	1 MIN	R
ERREZ	32°33' 01.1" N 034° 32' 59.9" E	067 (071.5)		-FL 200 +9 000	1 MIN	L