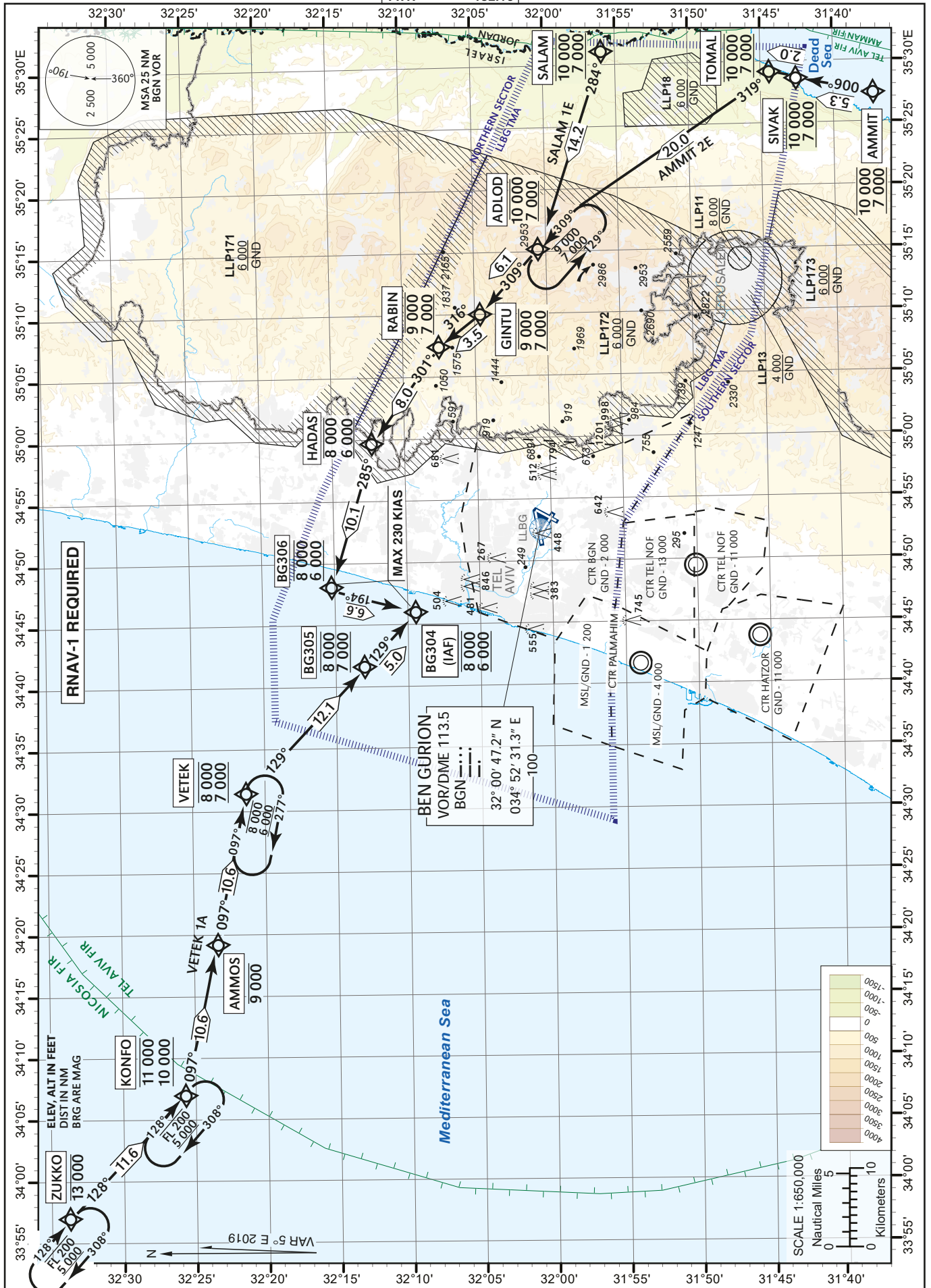


STANDARD ARRIVAL
CHART - INSTRUMENT
(RNAV STAR) - ICAO

TRANSITION LVL 200

ATIS Arrival	132.50
APP	120.50
TMA	119.50
ARR	131.10
TWR	132.10

TEL-AVIV / BEN-GURION (LLBG)
RWY 30
VETEK 1A, AMMIT 2E, SALAM 1E



CHANGES: Routing Revised Chart.

VETEK 1A STAR RWY 30

Navigation Specification	Path Descriptor (Recommended)	Waypoint Identifier	Latitude	Longitude	Fly-Over	Course/Track M° (T°)	Distance (NM)	Turn Direction	Altitude (ft)	Speed (Kts)	Remarks
RNAV1	IF	ZUKKO	32° 33' 42"N	033° 56' 57" E	-				-13 000		
RNAV1	TF	KONFO	32° 25' 42"N	034° 06' 56" E	-	128 (133.4)	11.6		-11 000 +10 000		
RNAV1	TF	AMMOS	32° 23' 30"N	034° 19' 11" E	-	097 (102.0)	10.6	L	-9 000		
RNAV1	TF	VETEK	32° 21' 17"N	034° 31' 24" E	-	097 (102.0)	10.6		-8 000 +7 000		
RNAV1	TF	BG305	32° 12' 54"N	034° 41' 41" E	-	129 (133.9)	12.1	R	-8 000 +7 000		
RNAV1	TF	BG304	32° 09' 24"N	034° 45' 58" E	-	129 (133.9)	5.0		-8 000 +6 000		IAF

AMMIT 2E STAR RWY 30

Navigation Specification	Path Descriptor (Recommended)	Waypoint Identifier	Latitude	Longitude	Fly-Over	Course/Track M° (T°)	Distance (NM)	Turn Direction	Altitude (ft)	Speed (Kts)	Remarks
RNAV1	IF	AMMIT	31° 37' 20"N	035° 27' 23" E	-				-10 000 +7 000		
RNAV1	TF	SIVAK	31° 42' 32"N	035° 28' 37" E	-	006 (011.4)	5.3		-10 000 +7 000		
RNAV1	TF	TOMAL	31° 44' 29"N	035° 29' 06" E	-	007 (012.0)	2.0		-10 000 +7 000		
RNAV1	TF	ADLOD	32° 00' 34"N	035° 15' 09" E	-	319 (323.4)	20.0	L	-10 000 +7 000		
RNAV1	TF	GINTU	32° 04' 48.4"N	035° 09' 58.2" E	-	309 (313.9)	6.1	L	-9 000 +7 000		
RNAV1	TF	RABIN	32° 07' 32.2"N	035° 07' 20.9" E	-	316 (320.7)	3.5		-9 000 +7 000		
RNAV1	TF	HADAS	32° 12' 13"N	034° 59' 40" E	-	301 (305.6)	8.0	L	-8 000 +6 000		
RNAV1	TF	BG306	32° 15' 39"N	034° 48' 30" E	-	285 (289.8)	10.1	L	-8 000 +6 000	-230	
RNAV1	TF	BG304	32° 09' 24"N	034° 45' 58" E	-	194 (199.0)	6.6	L	-8 000 +6 000	230	IAF

SALAM 1E STAR RWY 30

Navigation Specification	Path Descriptor (Recommended)	Waypoint Identifier	Latitude	Longitude	Fly-Over	Course/Track M° (T°)	Distance (NM)	Turn Direction	Altitude (ft)	Speed (Kts)	Remarks
RNAV1	IF	SALAM	31° 56' 00"N	035° 31' 00" E	-				-10 000 +7 000		
RNAV1	TF	ADLOD	32° 00' 34"N	035° 15' 09" E	-	284 (288.6)	14.2		-10 000 +7 000		
RNAV1	TF	GINTU	32° 04' 48.4"N	035° 09' 58.2" E	-	309 (313.9)	6.1	R	-9 000 +7 000		
RNAV1	TF	RABIN	32° 07' 32.2"N	035° 07' 20.9" E	-	316 (320.8)	3.5		-9 000 +7 000		
RNAV1	TF	HADAS	32° 12' 13"N	034° 59' 40" E	-	301 (305.7)	8.0	L	-8 000 +6 000		
RNAV1	TF	BG306	32° 15' 39"N	034° 48' 30" E	-	285 (289.9)	10.1	L	-8 000 +6 000	-230	
RNAV1	TF	BG304	32° 09' 24"N	034° 45' 58" E	-	194 (199.0)	6.6	L	-8 000 +6 000	-230	IAF

Holding Identification

Holding Fix	Latitude Longitude	Inbound Course/Track M° (T°)	MAX IAS (Kts)	Altitude (ft)	Outbound Time / Distance	Turn Direction
ZUKKO	32° 33' 42"N 033° 56' 57" E	128 (133.4)		-FL 200 +5 000	1 Min	R
KONFO	32° 25' 42"N 034° 06' 56" E	128 (133.4)		-FL 200 +5 000	1 Min	R
VETEK	32° 21' 17"N 034° 31' 24" E	97 (102.0)		-8 000 +6 000	1 Min	R
ADLOD	32° 00' 34"N 035° 15' 09" E	309 (314.0)		-9 000 +7 000	1 Min	L