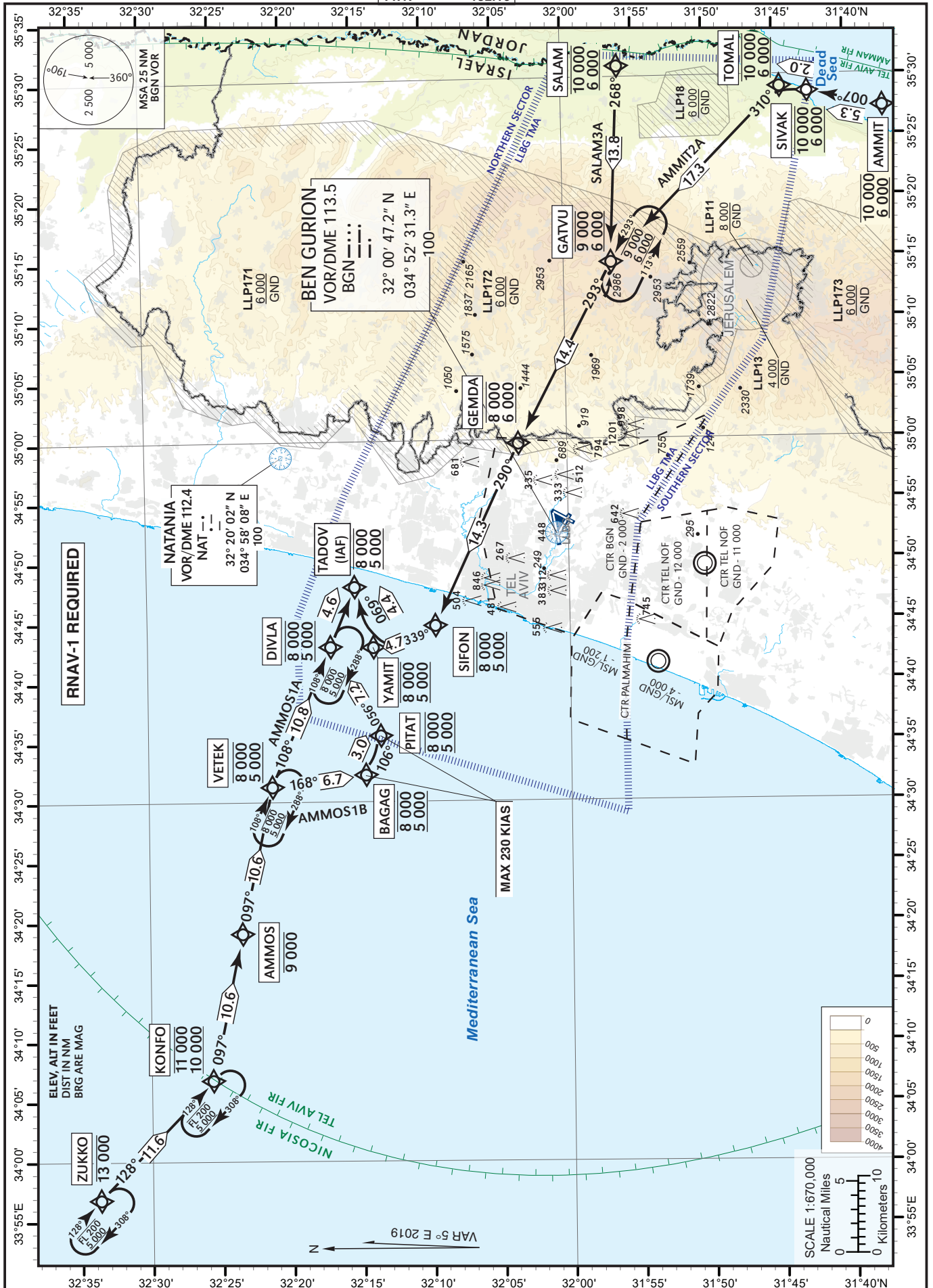


STANDARD ARRIVAL
CHART - INSTRUMENT
(RNAV STAR) - ICAO

TRANSITION LVL 200

ATIS Arrival	132.50
APP	120.50
TMA	119.50
ARR	131.10
TWR	132.10

TEL-AVIV / BEN-GURION (LLBG)
RWYs 21,26
AMMOS1A, AMMOS1B, AMMIT2A, SALAM3A



AMMOS1A STAR

Navigation Specification	Path Descriptor (Recommended)	Waypoint Identifier	Latitude Longitude	Fly-Over	Course/Track M° (T°)	Distance (NM)	Turn Direction	Altitude (ft)	Speed (Kts)	Remarks
RNAV1	IF	ZUKKO	32° 33' 42"N 033° 56' 57" E	-				-13 000		
RNAV1	TF	KONFO	32° 25' 42"N 034° 06' 56" E	-	128 (133.4)	11.6		-11 000 +10 000		
RNAV1	TF	AMMOS	32° 23' 30"N 034° 19' 11" E	-	097 (102.0)	10.6	L	-9 000		
RNAV1	TF	VETEK	32° 21' 17"N 034° 31' 24" E	-	097 (102.0)	10.6		-8 000 +5 000		
RNAV1	TF	DIVLA	32° 17' 03"N 034° 43' 04" E	-	108 (113.1)	10.8	R	-8 000 +5 000		
RNAV1	TF	TADOV	32° 15' 15.0"N 034° 48' 00.0" E	-	108 (113.2)	4.6		-8 000 +5 000		IAF

AMMOS1B STAR

Navigation Specification	Path Descriptor (Recommended)	Waypoint Identifier	Latitude Longitude	Fly-Over	Course/Track M° (T°)	Distance (NM)	Turn Direction	Altitude (ft)	Speed (Kts)	Remarks
RNAV1	IF	ZUKKO	32° 33' 42"N 033° 56' 57" E	-				-13 000		
RNAV1	TF	KONFO	32° 25' 42"N 034° 06' 56" E	-	128 (133.4)	11.6		-11 000 +10 000		
RNAV1	TF	AMMOS	32° 23' 30"N 034° 19' 11" E	-	097 (102.0)	10.6	L	-9 000		
RNAV1	TF	VETEK	32° 21' 17"N 034° 31' 24" E	-	097 (102.0)	10.6		-8 000 +5 000		
RNAV1	TF	BAGAG	32° 14' 38"N 034° 32' 23" E	-	168 (172.8)	6.7	R	-8 000 +5 000	-230	
RNAV1	TF	PITAT	32° 13' 33"N 034° 35' 38" E	-	106 (111.4)	3.0	L	-8 000 +5 000	-230	
RNAV1	TF	DIVLA	32° 17' 03"N 034° 43' 04" E	-	056 (061.0)	7.2	L	-8 000 +5 000		
RNAV1	TF	TADOV	32° 15' 15.0"N 034° 48' 00.0" E	-	108 (113.2)	4.6	R	-8 000 +5 000		IAF

AMMIT2A STAR

Navigation Specification	Path Descriptor (Recommended)	Waypoint Identifier	Latitude Longitude	Fly-Over	Course/Track M° (T°)	Distance (NM)	Turn Direction	Altitude (ft)	Speed (Kts)	Remarks
RNAV1	IF	AMMIT	31° 37' 20"N 035° 27' 23" E	-				-10 000 +6 000		
RNAV1	TF	SIVAK	31° 42' 32"N 035° 28' 37" E	-	007 (011.5)	5.3		-10 000 +6 000		
RNAV1	TF	TOMAL	31° 44' 29"N 035° 29' 06" E	-	007 (012.0)	2.0		-10 000 +6 000		
RNAV1	TF	GATVU	31° 56' 42"N 035° 14' 45" E	-	310 (315.0)	17.3	L	-9 000 +6 000		
RNAV1	TF	GEMDA	32° 03' 26"N 034° 59' 48" E	-	293 (297.9)	14.4		-8 000 +6 000		
RNAV1	TF	SIFON	32° 09' 26"N 034° 44' 33" E	-	290 (294.7)	14.3		-8 000 +5 000		
RNAV1	TF	YAMIT	32° 14' 00"N 034° 43' 00" E	-	339 (343.9)	4.7	R	-8 000 +5 000		
RNAV1	TF	TADOV	32° 15' 15.0"N 034° 48' 00.0" E	-	069 (073.6)	4.4	R	-8 000 +5 000		IAF

SALAM3A STAR

Navigation Specification	Path Descriptor (Recommended)	Waypoint Identifier	Latitude Longitude	Fly-Over	Course/Track M° (T°)	Distance (NM)	Turn Direction	Altitude (ft)	Speed (Kts)	Remarks
RNAV1	IF	SALAM	31° 56' 00"N 035° 31' 00" E	-				-10 000 +6 000		
RNAV1	TF	GATVU	31° 56' 42"N 035° 14' 45" E	-	268 (272.9)	13.8		-9 000 +6 000		
RNAV1	TF	GEMDA	32° 03' 26"N 034° 59' 48" E	-	293 (297.9)	14.4	R	-8 000 +6 000		
RNAV1	TF	SIFON	32° 09' 26"N 034° 44' 33" E	-	290 (294.7)	14.3		-8 000 +5 000		
RNAV1	TF	YAMIT	32° 14' 00"N 034° 43' 00" E	-	339 (343.9)	4.7	R	-8 000 +5 000		
RNAV1	TF	TADOV	32° 15' 15.0"N 034° 48' 00.0" E	-	069 (073.6)	4.4	R	-8 000 +5 000		IAF

Holding Identification

Holding Fix	Latitude Longitude	Inbound Course/Track M° (T°)	MAX IAS (Kts)	Altitude (ft)	Outbound Time / Distance	Turn Direction
ZUKKO	32° 33' 42"N 033° 56' 57" E	128 (133.4)		-FL 200 +5 000	1 Min	R
KONFO	32° 25' 42"N 034° 06' 56" E	128 (133.4)		-FL 200 +5 000	1 Min	R
VETEK	32° 21' 17"N 034° 31' 24" E	108 (113.0)		-8 000 +5 000	1 Min	R
DIVLA	32° 17' 03"N 034° 43' 04" E	108 (113.0)		-8 000 +5 000	1 Min	R
GATVU	31° 56' 42"N 035° 14' 45" E	293 (298.3)	-250	-9 000 +6 000	1 Min	L