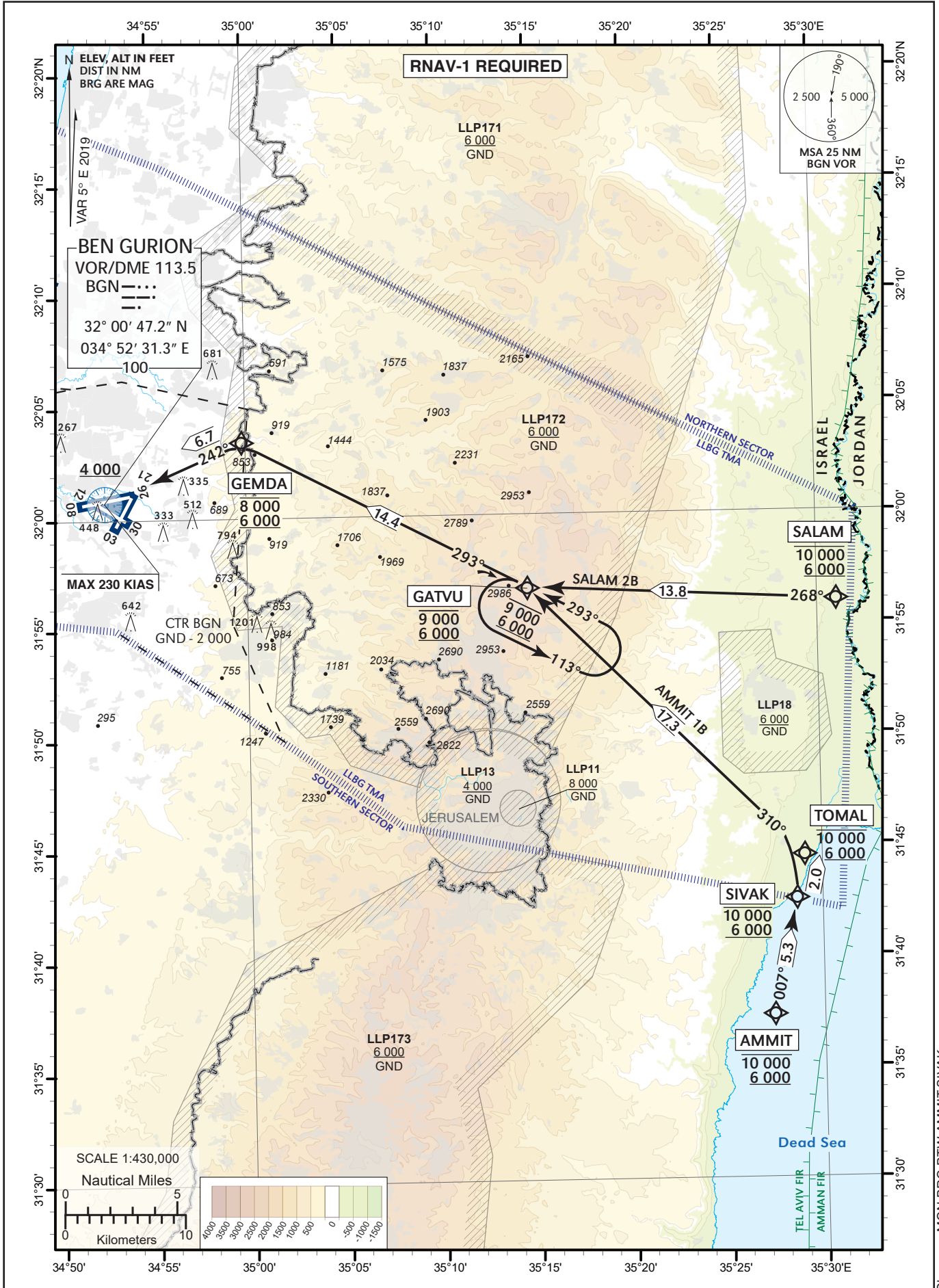


STANDARD ARRIVAL
CHART - INSTRUMENT
(STAR) - ICAO

TRANSITION LVL 200

ATIS Arrival	132.50
TMA	119.50
APP	120.50
TWR	134.60

TEL-AVIV / BEN-GURION (LLBG)
RWY 12
AMMIT1B, SALAM2B



Changes: MGN BRG BTW AMMIT-SIVAK.

AMMIT1B STAR RWY 12

Navigation Specification	Path Descriptor (Recommended)	Waypoint Identifier	Latitude Longitude	Fly-Over	Course/Track M° (T°)	Distance (NM)	Turn Direction	Altitude (ft)	Speed (Kts)	Remarks
RNAV1	IF	AMMIT	31° 37' 20"N 035° 27' 23" E	-				-10 000 +6 000		
RNAV1	TF	SIVAK	31° 42' 32"N 035° 28' 37" E	-	007 (011.5)	5.3		-10 000 +6 000		
RNAV1	TF	TOMAL	31° 44' 29"N 035° 29' 06" E	-	007 (012.0)	2.0		-10 000 +6 000		
RNAV1	TF	GATVU	31° 56' 42"N 035° 14' 45" E	-	310 (315.0)	17.3	L	-9 000 +6 000		
RNAV1	TF	GEMDA	32° 03' 26"N 034° 59' 48" E	-	293 (297.9)	14.4		-8 000 +6 000		
RNAV1	TF	BGN	32° 00' 47"N 034° 52' 31" E	-	242 (246.9)	6.7	L	+4 000	-230	

SALAM2B STAR RWY 12

Navigation Specification	Path Descriptor (Recommended)	Waypoint Identifier	Latitude Longitude	Fly-Over	Course/Track M° (T°)	Distance (NM)	Turn Direction	Altitude (ft)	Speed (Kts)	Remarks
RNAV1	IF	SALAM	31° 56' 00"N 035° 31' 00" E	-				-10 000 +6 000		
RNAV1	TF	GATVU	31° 56' 42"N 035° 14' 45" E	-	268 (272.9)	13.8		-9 000 +6 000		
RNAV1	TF	GEMDA	32° 03' 26"N 034° 59' 48" E	-	293 (297.9)	14.4	R	-8 000 +6 000		
RNAV1	TF	BGN	32° 00' 47"N 034° 52' 31" E	-	242 (246.9)	6.7	L	+4 000	-230	

Holding Identification

Holding Fix	Latitude Longitude	Inbound Course/Track M° (T°)	MAX IAS (Kts)	Altitude (ft)	Outbound Time / Distance	Turn Direction
GATVU	31° 56' 42"N 035° 14' 45" E	293 (298.3)	-250	-9 000 +6 000	1 Min	L