

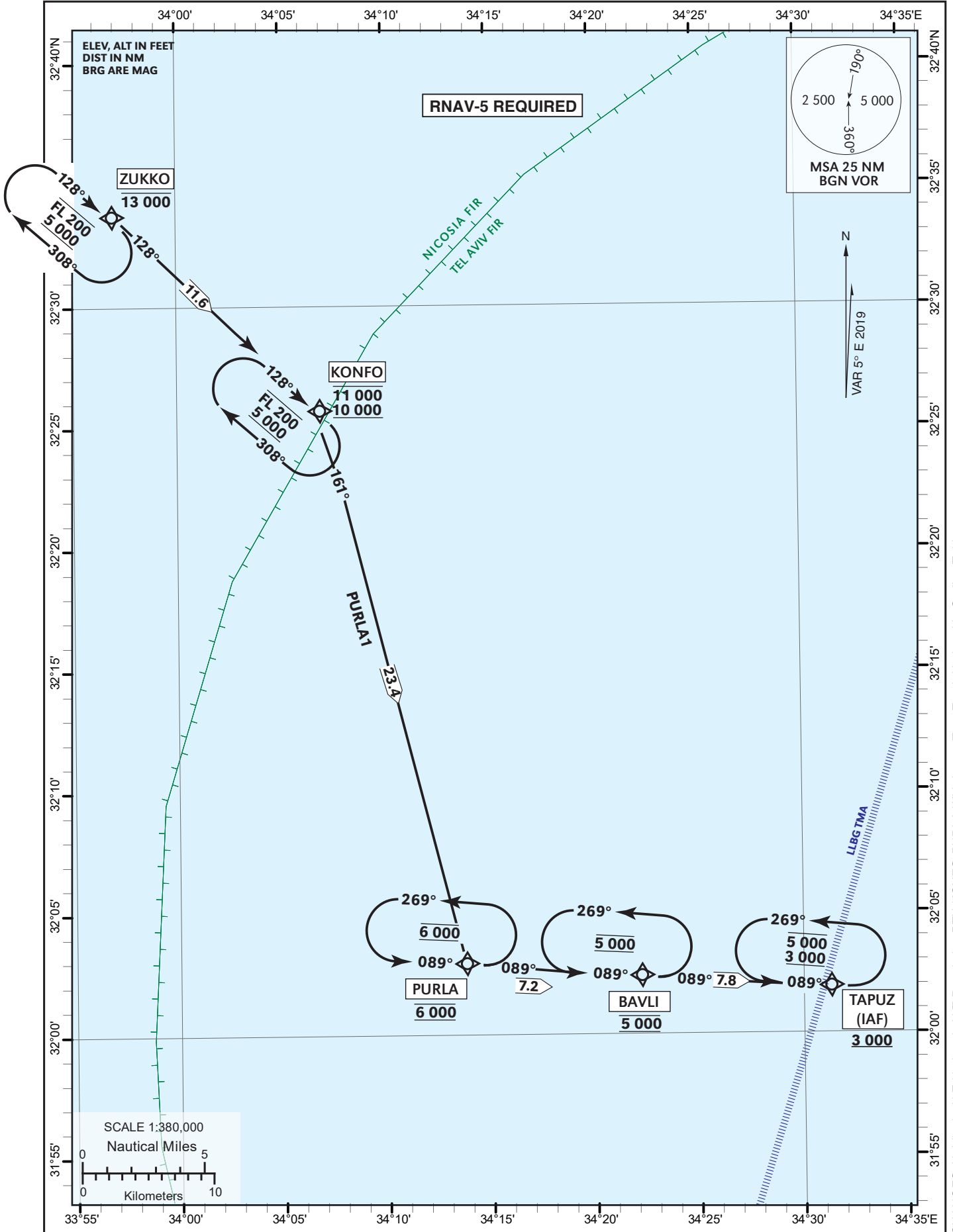
STANDARD ARRIVAL
CHART- INSTRUMENT
(RNAV STAR) - ICAO

TRANSITION LVL 200

ATIS Arrival	132.50
ACC	121.40
APP	120.50
TWR	134.60

TEL-AVIV / BEN-GURION (LLBG)

RWY 08
PURLA1



CHANGES: Holding's ALT Updated, ALT Restriction BTN KONFO-PURLA Withdrawn, True Track Updated in Coding Table.

PURLA1 STAR RWY 08

Navigation Specification	Path Descriptor (Recommended)	Waypoint Identifier	Latitude Longitude	Fly-Over	Course/Track M° (T°)	Distance (NM)	Turn Direction	Altitude (ft)	Speed (Kts)	Remarks
RNAV5	IF	ZUKKO	32° 33' 42"N 033° 56' 57" E	-				-13 000		
RNAV5	TF	KONFO	32° 25' 42"N 034° 06' 56" E	-	128 (133.4)	11.6		-11 000 +10 000		
RNAV5	TF	PURLA	32° 02' 56"N 034° 13' 47" E	-	161 (165.6)	23.4	R	@6 000		
RNAV5	TF	BAVLI	32° 02' 29"N 034° 22' 13" E	-	089 (093.6)	7.2	L	@5 000		
RNAV5	TF	TAPUZ	32° 01' 57.0"N 034° 31' 24.0" E	-	089 (093.9)	7.8		+3 000		IAF

Holding Identification

Holding Fix	Latitude Longitude	Inbound Course/Track M° (T°)	MAX IAS (Kts)	Altitude (ft)	Outbound Time / Distance	Turn Direction
ZUKKO	32° 33' 42"N 033° 56' 57" E	128 (133.4)		-FL 200 +5 000	1 Min	R
KONFO	32° 25' 42"N 034° 06' 56" E	128 (133.4)		-FL 200 +5 000	1 Min	R
PURLA	32° 02' 56"N 034° 13' 47" E	089 (093.6)		@6 000	1 Min	L
BAVLI	32° 02' 29"N 034° 22' 13" E	089 (093.6)		@5 000	1 Min	L
TAPUZ	32° 01' 57.0"N 034° 31' 24.0" E	089 (093.9)		-5 000 +3 000	1 Min	L