

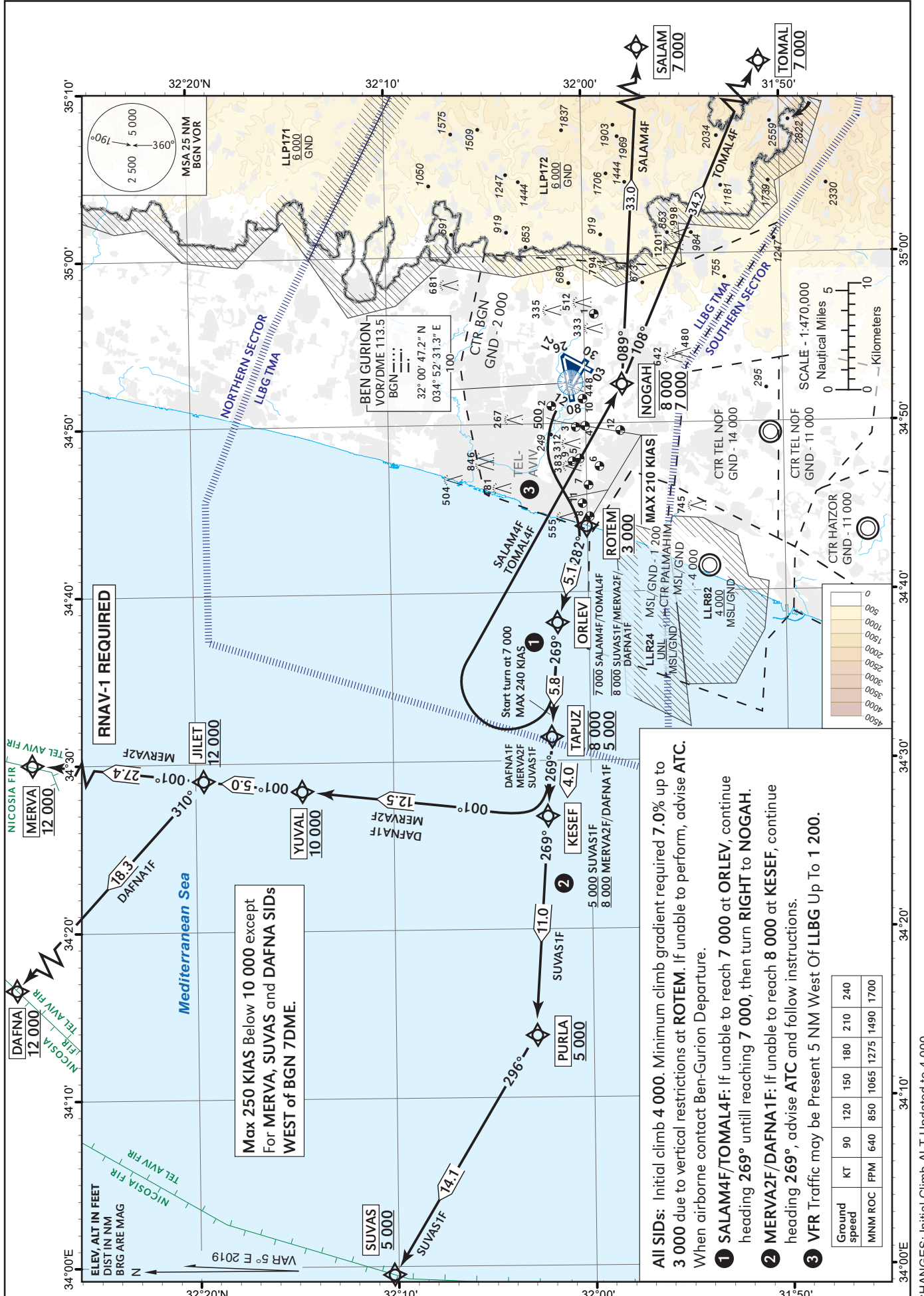
STANDARD DEPARTURE  
CHART - INSTRUMENT  
(SID) - ICAO

TRANSITION  
ALT 18 000

ATIS departue 132.80  
TWR 134.60  
DEP 120.50  
ACC 121.40

TEL-AVIV / BEN-GURION (LLBG)  
RWY 30

SALAM4F, TOMAL4F, SUVAS1F, DAFNA1F, MERVA2F



Max 250 KIAS Below 10 000 except  
For MERVA, SUVAS and DAFNA SIDs  
WEST of BGN 7DME.

**All SIDs:** Initial climb 4 000. Minimum climb gradient required 7.0% up to 3 000 due to vertical restrictions at ROTEM. If unable to perform, advise ATC. When airborne contact Ben-Gurion Departure.

**1 SALAM4F/TOMAL4F:** If unable to reach 7 000 at ORLEV, continue heading 269° until reaching 7 000, then turn RIGHT to NOGAH.

**2 MERVA2F/DAFNA1F:** If unable to reach 8 000 at KESEF, continue heading 269°, advise ATC and follow instructions.

**3 VFR Traffic** may be Present 5 NM West Of LLBG Up To 1 200.

Ground speed	KT	90	120	150	180	210	240
MNM ROC	FPM	640	850	1065	1275	1490	1700

SALAM4F RWY 30

Navigation Specification	Path Descriptor (Recommended)	Waypoint Identifier	Latitude Longitude	Fly-Over	Course/Track M° (T°)	Distance (NM)	Turn Direction	Altitude (ft)	Speed (Kts)	Remarks
RNAV1	CA				296 (301.4)			+500	-210	
RNAV1	DF	ROTEM	32° 00' 03.0"N 034° 43' 55.0" E				L	+3 000	-210	
RNAV1	TF	ORLEV	32° 01' 35.0"N 034° 38' 12.0" E		282 (287.5)	5.1	R	-7 000	-240	
RNAV1	CA				269 (273.7)			@7 000	-240	
RNAV1	DF	NOGAH	31° 58' 08.0"N 034° 52' 19.0" E				R	-8 000 +7 000	-240	
RNAV1	TF	SALAM	31° 56' 00.0"N 035° 31' 00.0" E		089 (093.5)	33.0		+7 000		

TOMAL4F RWY 30

Navigation Specification	Path Descriptor (Recommended)	Waypoint Identifier	Latitude Longitude	Fly-Over	Course/Track M° (T°)	Distance (NM)	Turn Direction	Altitude (ft)	Speed (Kts)	Remarks
RNAV1	CA				296 (301.4)			+500	-210	
RNAV1	DF	ROTEM	32° 00' 03.0"N 034° 43' 55.0" E				L	+3 000	-210	
RNAV1	TF	ORLEV	32° 01' 35.0"N 034° 38' 12.0" E		282 (287.5)	5.1	R	-7 000	-240	
RNAV1	CA				269 (273.7)			@7 000	-240	
RNAV1	DF	NOGAH	31° 58' 08.0"N 034° 52' 19.0" E				R	-8 000 +7 000	-240	
RNAV1	TF	TOMAL	31° 44' 29.0"N 035° 29' 06.0" E		108 (113.3)	34.2		+7 000		

SUVAS1F RWY 30

Navigation Specification	Path Descriptor (Recommended)	Waypoint Identifier	Latitude Longitude	Fly-Over	Course/Track M° (T°)	Distance (NM)	Turn Direction	Altitude (ft)	Speed (Kts)	Remarks
RNAV1	CA				296 (301.4)			+500	-210	
RNAV1	DF	ROTEM	32° 00' 03.0"N 034° 43' 55.0" E				L	+3 000	-210	
RNAV1	TF	ORLEV	32° 01' 35.0"N 034° 38' 12.0" E		282 (287.5)	5.1	R	-8 000		
RNAV1	TF	TAPUZ	32° 01' 57.0"N 034° 31' 24.0" E		269 (273.7)	5.8	L	-8 000 +5 000		
RNAV1	TF	KESEF	32° 02' 11.9"N 034° 26' 41.7" E		269 (273.6)	4.0		+5 000		
RNAV1	TF	PURLA	32° 02' 56.0"N 034° 13' 47.0" E		269 (273.8)	11.0		+5 000		
RNAV1	TF	SUVAS	32° 10' 10.0"N 033° 59' 33.0" E		296 (300.9)	14.1	R	+5 000		

DAFNA1F RWY 30

Navigation Specification	Path Descriptor (Recommended)	Waypoint Identifier	Latitude Longitude	Fly-Over	Course/Track M° (T°)	Distance (NM)	Turn Direction	Altitude (ft)	Speed (Kts)	Remarks
RNAV1	CA				296 (301.4)			+500	-210	
RNAV1	DF	ROTEM	32° 00' 03.0"N 034° 43' 55.0" E				L	+3 000	-210	
RNAV1	TF	ORLEV	32° 01' 35.0"N 034° 38' 12.0" E		282 (287.5)	5.1	R	-8 000		
RNAV1	TF	TAPUZ	32° 01' 57.0"N 034° 31' 24.0" E		269 (273.7)	5.8	L	-8 000 +5 000		
RNAV1	TF	KESEF	32° 02' 11.9"N 034° 26' 41.7" E		269 (273.6)	4.0		+8 000		
RNAV1	TF	YUVAL	32° 14' 36.8"N 034° 28' 20.0" E		001 (006.4)	12.5	R	+10 000		
RNAV1	TF	JILET	32° 19' 35.5"N 034° 28' 59.6" E		001 (006.4)	5.0		+12 000		
RNAV1	TF	DAFNA	32° 32' 36"N 034° 13' 48" E		310 (315.3)	18.3	L	+12 000		

MERVA2F RWY 30

Navigation Specification	Path Descriptor (Recommended)	Waypoint Identifier	Latitude Longitude	Fly-Over	Course/Track M° (T°)	Distance (NM)	Turn Direction	Altitude (ft)	Speed (Kts)	Remarks
RNAV1	CA				296 (301.4)			+500	-210	
RNAV1	DF	ROTEM	32° 00' 03.0"N 034° 43' 55.0" E				L	+3 000	-210	
RNAV1	TF	ORLEV	32° 01' 35.0"N 034° 38' 12.0" E		282 (287.5)	5.1	R	-8 000		
RNAV1	TF	TAPUZ	32° 01' 57.0"N 034° 31' 24.0" E		269 (273.7)	5.8	L	-8 000 +5 000		
RNAV1	TF	KESEF	32° 02' 11.9"N 034° 26' 41.7" E		269 (273.6)	4.0		+8 000		
RNAV1	TF	YUVAL	32° 14' 36.8"N 034° 28' 20.0" E		001 (006.4)	12.5	R	+10 000		
RNAV1	TF	JILET	32° 19' 35.5"N 034° 28' 59.6" E		001 (006.4)	5.0		+12 000		
RNAV1	TF	MERVA	32° 46' 54.0"N 034° 32' 38.0" E		001 (006.4)	27.4		+12 000		