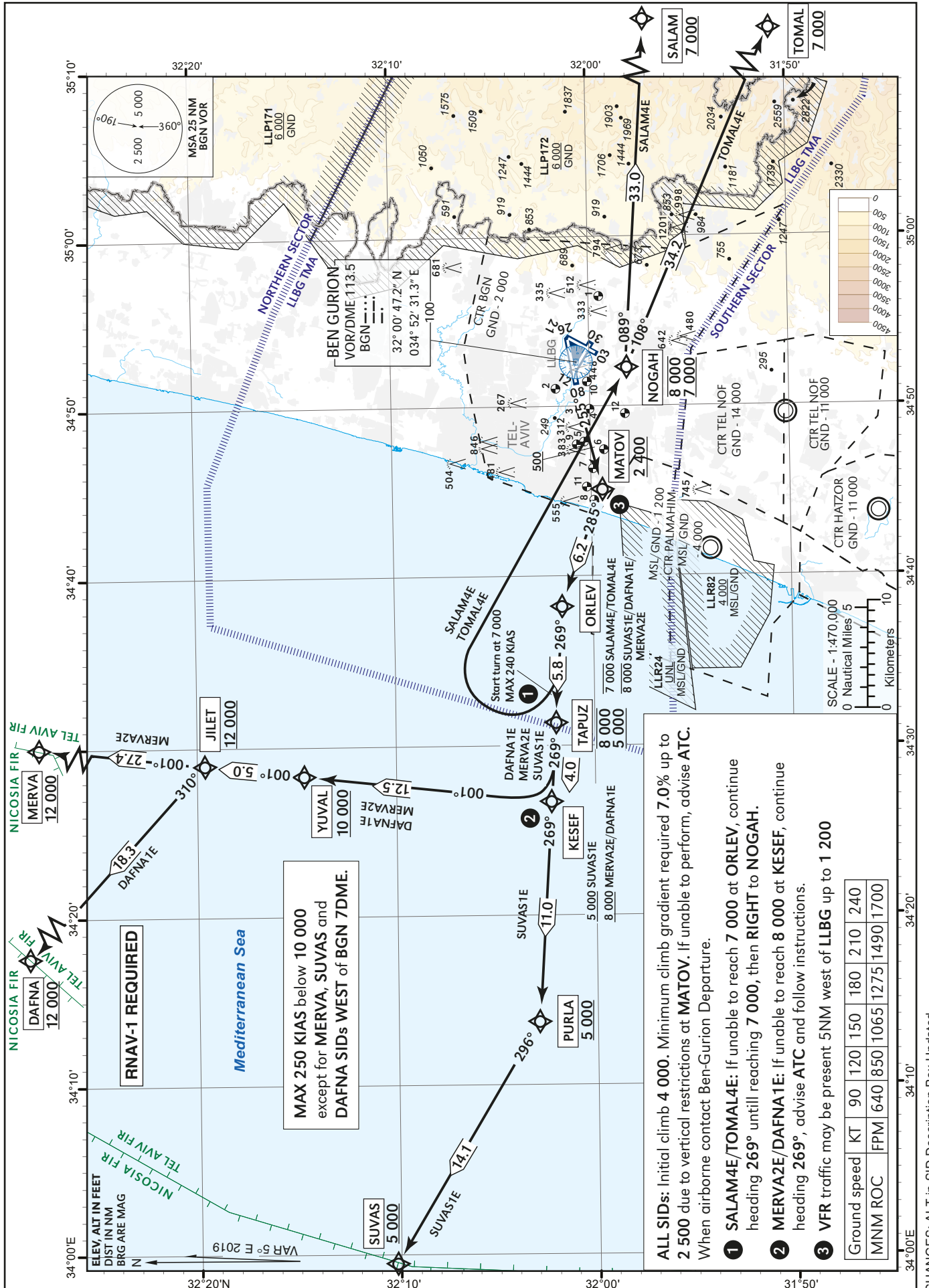


STANDARD DEPARTURE
CHART - INSTRUMENT
(SID) - ICAO

TRANSITION ALT 18 000	ATIS departue 132.80
	TWR 134.60
	DEP 120.50
	ACC 121.40

TEL-AVIV / BEN-GURION (LLBG)
RWY 26
SALAM4E, TOMAL4E, SUVAS1E, DAFNA1E, MERVA2E



SALAM4E RWY 26

Navigation Specification	Path Descriptor (Recommended)	Waypoint Identifier	Latitude Longitude	Fly-Over	Course/Track M° (T°)	Distance (NM)	Turn Direction	Altitude (ft)	Speed (Kts)	Remarks
RNAV1	CA				255 (259.8)			+500	-240	
RNAV1	DF	MATOV	31° 59' 26.0"N 034° 45' 06.0" E					+2 400	-240	
RNAV1	TF	ORLEV	32° 01' 35.0"N 034° 38' 12.0" E		285 (290.1)	6.2	R	-7 000	-240	
RNAV1	CA				269 (273.7)			@7 000	-240	
RNAV1	DF	NOGAH	31° 58' 08.0"N 034° 52' 19.0" E				R	-8 000 +7 000	-240	
RNAV1	TF	SALAM	31° 56' 00.0"N 035° 31' 00.0" E		089 (093.5)	33.0		+7 000		

TOMAL4E RWY 26

Navigation Specification	Path Descriptor (Recommended)	Waypoint Identifier	Latitude Longitude	Fly-Over	Course/Track M° (T°)	Distance (NM)	Turn Direction	Altitude (ft)	Speed (Kts)	Remarks
RNAV1	CA				255 (259.8)			+500	-240	
RNAV1	DF	MATOV	31° 59' 26.0"N 034° 45' 06.0" E					+2 400	-240	
RNAV1	TF	ORLEV	32° 01' 35.0"N 034° 38' 12.0" E		285 (290.1)	6.2	R	-7 000	-240	
RNAV1	CA				269 (273.7)			@7 000	-240	
RNAV1	DF	NOGAH	31° 58' 08.0"N 034° 52' 19.0" E				R	-8 000 +7 000	-240	
RNAV1	TF	TOMAL	31° 44' 29.0"N 035° 29' 06.0" E		108 (113.3)	34.2		+7 000		

SUVAS1E RWY 26

Navigation Specification	Path Descriptor (Recommended)	Waypoint Identifier	Latitude Longitude	Fly-Over	Course/Track M° (T°)	Distance (NM)	Turn Direction	Altitude (ft)	Speed (Kts)	Remarks
RNAV1	CA				255 (259.8)			+500	-250	
RNAV1	DF	MATOV	31° 59' 26.0"N 034° 45' 06.0" E					+2 400	-250	
RNAV1	TF	ORLEV	32° 01' 35.0"N 034° 38' 12.0" E		285 (290.1)	6.2	R	-8 000		
RNAV1	TF	TAPUZ	32° 01' 57.0"N 034° 31' 24.0" E		269 (273.7)	5.8	L	-8 000 +5 000		
RNAV1	TF	KESEF	32° 02' 11.9"N 034° 26' 41.7" E		269 (273.6)	4.0		+5 000		
RNAV1	TF	PURLA	32° 02' 56.0"N 034° 13' 47.0" E		269 (273.8)	11.0		+5 000		
RNAV1	TF	SUVAS	32° 10' 10.0"N 033° 59' 33.0" E		296 (300.9)	14.1	R	+5 000		

DAFNA1E SID RWY 26

Navigation Specification	Path Descriptor (Recommended)	Waypoint Identifier	Latitude Longitude	Fly-Over	Course/Track M° (T°)	Distance (NM)	Turn Direction	Altitude (ft)	Speed (Kts)	Remarks
RNAV1	CA				255 (259.8)			+500	-250	
RNAV1	DF	MATOV	31° 59' 26.0"N 034° 45' 06.0" E					+2 400	-250	
RNAV1	TF	ORLEV	32° 01' 35.0"N 034° 38' 12.0" E		285 (290.1)	6.2	R	-8 000		
RNAV1	TF	TAPUZ	32° 01' 57.0"N 034° 31' 24.0" E		269 (273.7)	5.8	L	-8 000 +5 000		
RNAV1	TF	KESEF	32° 02' 11.9"N 034° 26' 41.7" E		269 (273.6)	4.0		+8 000		
RNAV1	TF	YUVAL	32° 14' 36.8"N 034° 28' 20.0" E		001 (006.4)	12.5	R	+10 000		
RNAV1	TF	JILET	32° 19' 35.5"N 034° 28' 59.6" E		001 (006.4)	5.0		+12 000		
RNAV1	TF	DAFNA	32° 32' 36"N 034° 13' 48" E		310 (315.3)	18.3	L	+12 000		

MERVA2E RWY 26

Navigation Specification	Path Descriptor (Recommended)	Waypoint Identifier	Latitude Longitude	Fly-Over	Course/Track M° (T°)	Distance (NM)	Turn Direction	Altitude (ft)	Speed (Kts)	Remarks
RNAV1	CA				255 (259.8)			+500	-250	
RNAV1	DF	MATOV	31° 59' 26.0"N 034° 45' 06.0" E					+2 400	-250	
RNAV1	TF	ORLEV	32° 01' 35.0"N 034° 38' 12.0" E		285 (290.1)	6.2	R	-8 000		
RNAV1	TF	TAPUZ	32° 01' 57.0"N 034° 31' 24.0" E		269 (273.7)	5.8	L	-8 000 +5 000		
RNAV1	TF	KESEF	32° 02' 11.9"N 034° 26' 41.7" E		269 (273.6)	4.0		+8 000		
RNAV1	TF	YUVAL	32° 14' 36.8"N 034° 28' 20.0" E		001 (006.4)	12.5	R	+10 000		
RNAV1	TF	JILET	32° 19' 35.5"N 034° 28' 59.6" E		001 (006.4)	5.0		+12 000		
RNAV1	TF	MERVA	32° 46' 54.0"N 034° 32' 38.0" E		001 (006.4)	27.4		+12 000		