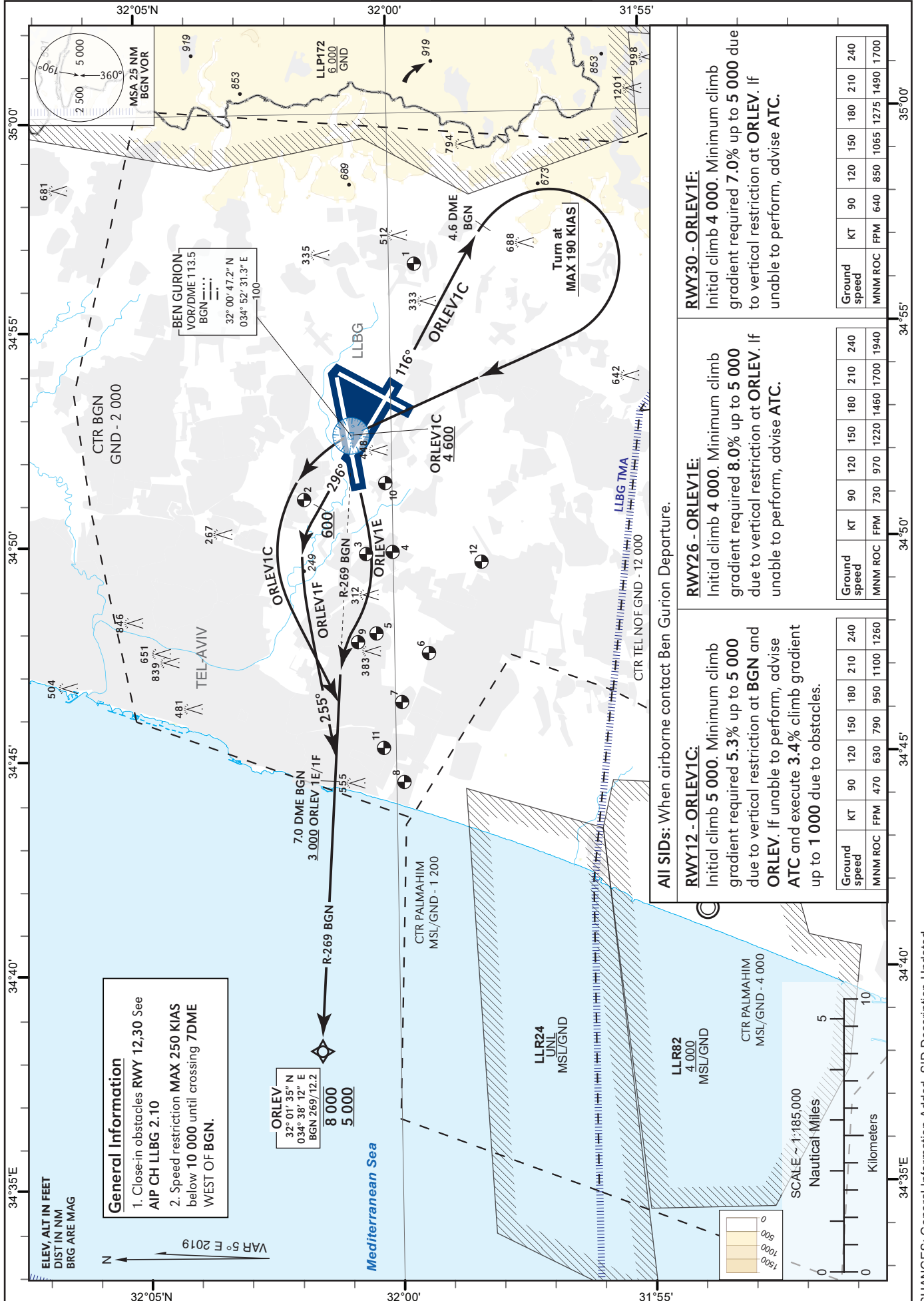


STANDARD INSTRUMENT  
DEPARTURE CHART  
(SID) - ICAO

TRANSITION ALT 18 000

ATIS departure	132.80
TWR	134.60
DEP	120.50
ACC	121.40

TEL-AVIV / BEN-GURION (LLBG)  
RWYs 12, 26, 30  
ORLEV1C, 1E,1F



**General Information**  
1. Close-in obstacles RWY 12,30. See AIP CH LLBG 2.10  
2. Speed restriction MAX 250 KIAS below 10 000 until crossing 7DME WEST OF BGN.

**ORLEV**  
32° 01' 35" N  
034° 38' 12" E  
BGN 269/12.2  
8 000  
5 000

**RWY30 - ORLEV1E:**  
Initial climb 4 000. Minimum climb gradient required 7.0% up to 5 000 due to vertical restriction at ORLEV. If unable to perform, advise ATC.

Ground speed	KT	90	120	150	180	210	240
MNM ROC	FPM	640	850	1065	1275	1490	1700

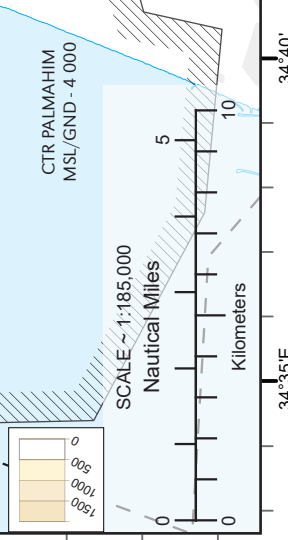
**RWY26 - ORLEV1E:**  
Initial climb 4 000. Minimum climb gradient required 8.0% up to 5 000 due to vertical restriction at ORLEV. If unable to perform, advise ATC.

Ground speed	KT	90	120	150	180	210	240
MNM ROC	FPM	730	970	1220	1460	1700	1940

**RWY12 - ORLEV1C:**  
Initial climb 5 000. Minimum climb gradient required 5.3% up to 5 000 due to vertical restriction at BGN and ORLEV. If unable to perform, advise ATC and execute 3.4% climb gradient up to 1 000 due to obstacles.

Ground speed	KT	90	120	150	180	210	240
MNM ROC	FPM	470	630	790	950	1100	1260

All SIDs: When airborne contact Ben Gurion Departure.



**LEFT BLANK INTENTIONALLY**