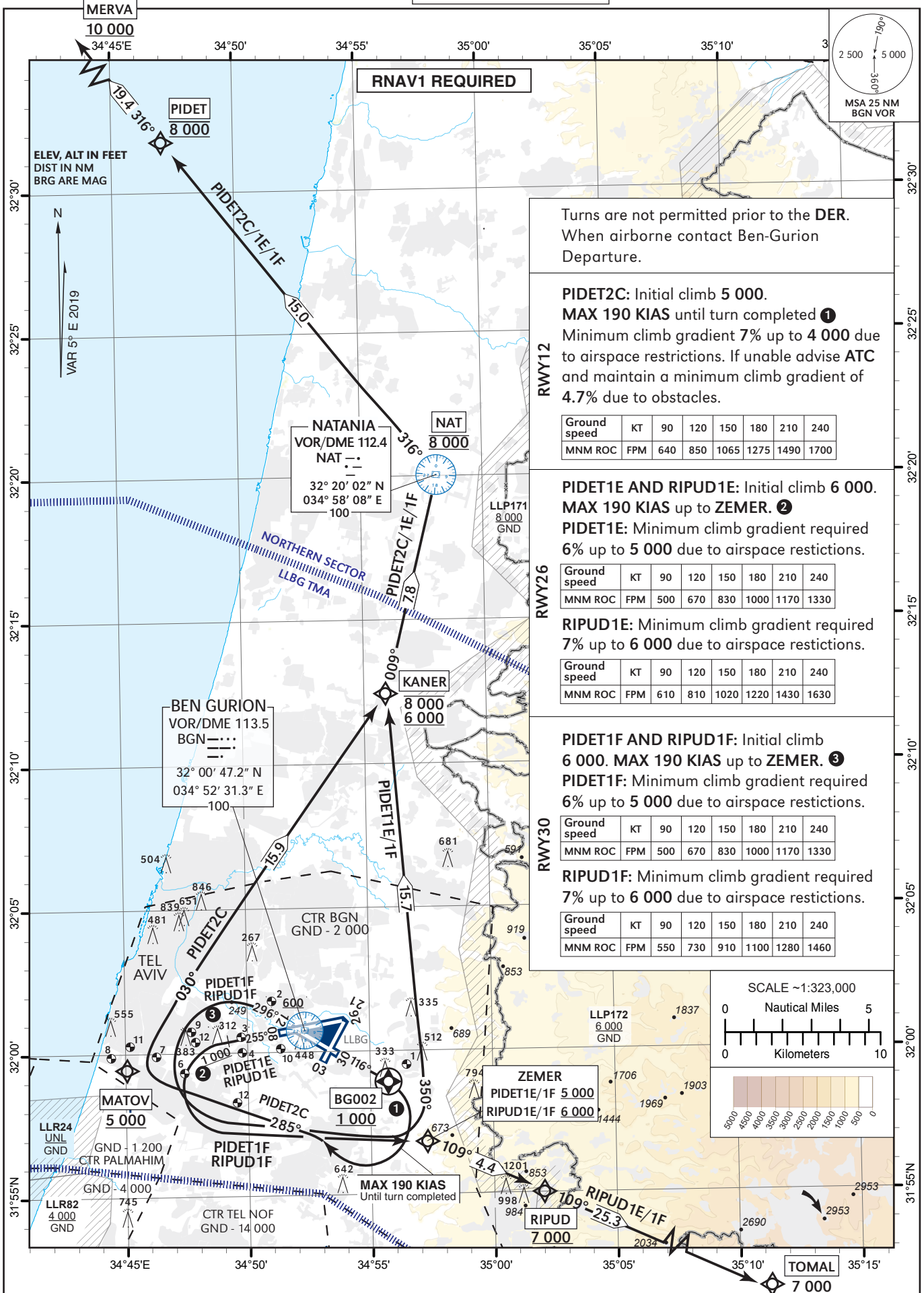


STANDARD DEPARTURE  
CHART - INSTRUMENT  
(SID) - ICAO

TRANSITION ALT 18 000

ATIS DEPARTURE 132.80  
TWR 134.60  
DEP 120.50  
ACC 121.40

TEL-AVIV / BEN-GURION (LLBG)  
RWYs 12, 26, 30  
PIDET 2C/1E/1F, RIPUD 1E/1F



**PIDET 2C SID RWY 12**

Navigation Specification	Path Descriptor (Recommended)	Waypoint Identifier	Latitude Longitude	Fly-Over	Course/Track M° (T°)	Distance (NM)	Turn Direction	Altitude (ft)	Speed (Kts)	Remarks
RNAV1	CF	BG002	31° 58' 55.56"N 034° 55' 42.64" E	Y	116 (121.4)	2.0		+1 000	-190	
RNAV1	CF	MATOV	31° 59' 26.0"N 034° 45' 06.0" E		285 (290.2)		R	+5 000	-190	
RNAV1	TF	KANER	32° 12' 28.0"N 034° 55' 55.0" E		030 (035.2)	15.9	R	-8 000 +6 000	-250	
RNAV1	TF	NAT	32° 20' 02.0"N 034° 58' 08.0" E		009 (014.0)	7.8	L	@8 000	-250	
RNAV1	TF	PIDET	32° 31' 46.0"N 034° 47' 03.0" E		316 (321.4)	15.0	L	@8 000	-250	
RNAV1	TF	MERVA	32° 46' 54.0"N 034° 32' 38.0" E		316 (321.2)	19.4		+10 000		

**PIDET 1E SID RWY 26**

Navigation Specification	Path Descriptor (Recommended)	Waypoint Identifier	Latitude Longitude	Fly-Over	Course/Track M° (T°)	Distance (NM)	Turn Direction	Altitude (ft)	Speed (Kts)	Remarks
RNAV1	CA				255 (259.8)			+1 000	-190	
RNAV1	DF	ZEMER	31° 56' 48.6"N 034° 57' 22.2" E				L	+5 000	-190	
RNAV1	TF	KANER	32° 12' 28.0"N 034° 55' 55.0" E		350 (355.5)	15.7	L	-8 000 +6 000	-250	
RNAV1	TF	NAT	32° 20' 02.0"N 034° 58' 08.0" E		009 (014.0)	7.8	R	@8 000	-250	
RNAV1	TF	PIDET	32° 31' 46.0"N 034° 47' 03.0" E		316 (321.4)	15.0	L	@8 000	-250	
RNAV1	TF	MERVA	32° 46' 54.0"N 034° 32' 38.0" E		316 (321.2)	19.4		+10 000		

**PIDET 1F SID RWY 30**

Navigation Specification	Path Descriptor (Recommended)	Waypoint Identifier	Latitude Longitude	Fly-Over	Course/Track M° (T°)	Distance (NM)	Turn Direction	Altitude (ft)	Speed (Kts)	Remarks
RNAV1	CA				296 (301.4)			+600	-190	
RNAV1	DF	ZEMER	31° 56' 48.6"N 034° 57' 22.2" E				L	+5 000	-190	
RNAV1	TF	KANER	32° 12' 28.0"N 034° 55' 55.0" E		350 (355.5)	15.7	L	-8 000 +6 000	-250	
RNAV1	TF	NAT	32° 20' 02.0"N 034° 58' 08.0" E		009 (014.0)	7.8	R	@8 000	-250	
RNAV1	TF	PIDET	32° 31' 46.0"N 034° 47' 03.0" E		316 (321.4)	15.0	L	@8 000	-250	
RNAV1	TF	MERVA	32° 46' 54.0"N 034° 32' 38.0" E		316 (321.2)	19.4		+10 000		

**RIPUD 1E SID RWY 26**

Navigation Specification	Path Descriptor (Recommended)	Waypoint Identifier	Latitude Longitude	Fly-Over	Course/Track M° (T°)	Distance (NM)	Turn Direction	Altitude (ft)	Speed (Kts)	Remarks
RNAV1	CA				255 (259.8)			+1 000	-190	
RNAV1	DF	ZEMER	31° 56' 48.6"N 034° 57' 22.2" E				L	+6 000	-190	
RNAV1	TF	RIPUD	31° 54' 59.5"N 035° 02' 05.0" E		109 (114.3)	4.4	R	+7 000	-250	
RNAV1	TF	TOMAL	31° 44' 29.0"N 035° 29' 06.0" E		109 (114.4)	25.3		+7 000	-250	

**RIPUD 1F SID RWY 30**

Navigation Specification	Path Descriptor (Recommended)	Waypoint Identifier	Latitude Longitude	Fly-Over	Course/Track M° (T°)	Distance (NM)	Turn Direction	Altitude (ft)	Speed (Kts)	Remarks
RNAV1	CA				296 (301.4)			+600	-190	
RNAV1	DF	ZEMER	31° 56' 48.6"N 034° 57' 22.2" E				L	+6 000	-190	
RNAV1	TF	RIPUD	31° 54' 59.5"N 035° 02' 05.0" E		109 (114.3)	4.4	R	+7 000	-250	
RNAV1	TF	TOMAL	31° 44' 29.0"N 035° 29' 06.0" E		109 (114.4)	25.3		+7 000	-250	