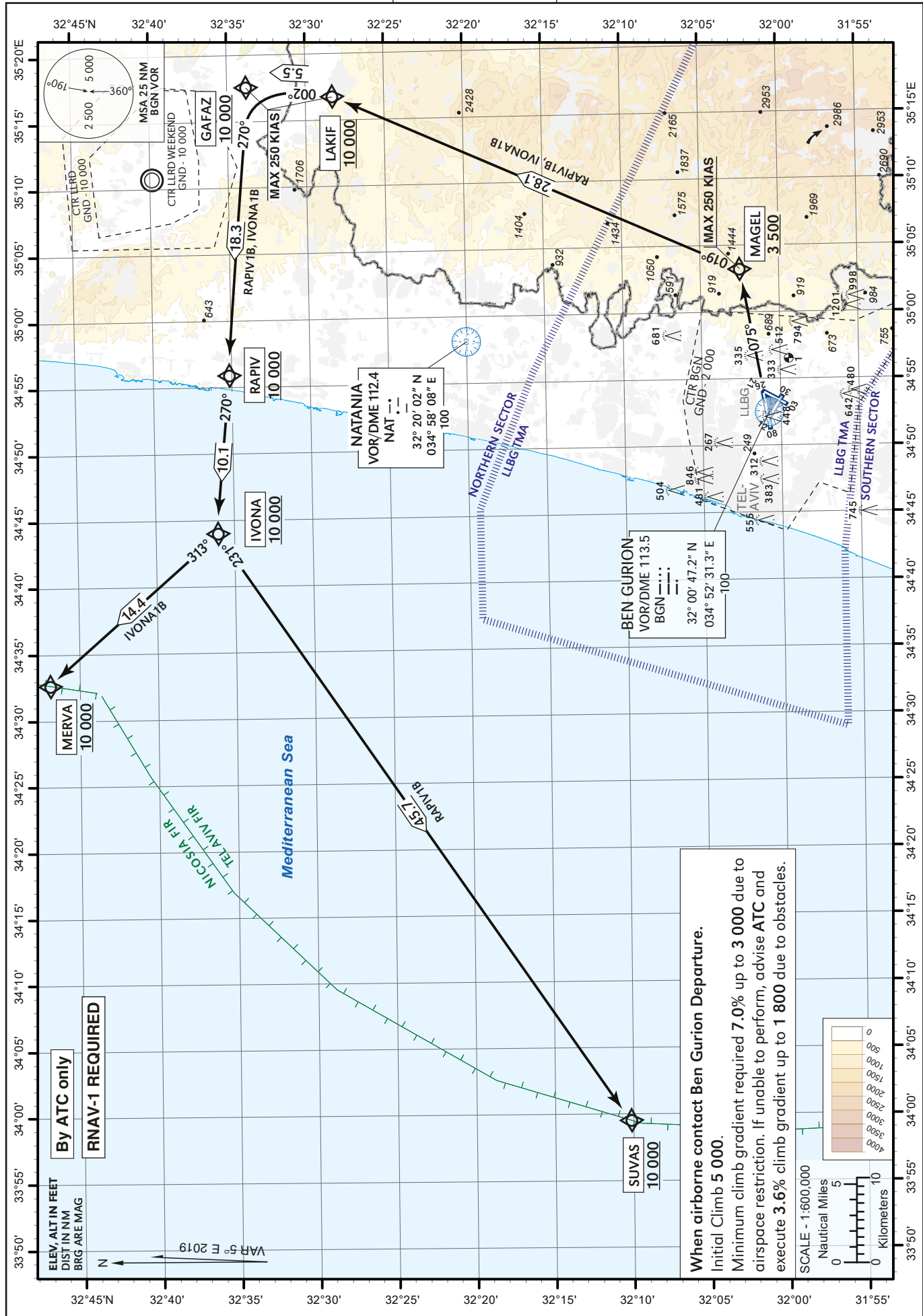


STANDARD INSTRUMENT
DEPARTURE CHART
(SID) - ICAO

TRANSITION
ALTITUDE 18 000

ATIS departue 132.80
TWR 134.60
DEP 120.50
ACC 121.40

TEL-AVIV / BEN-GURION (LLBG)
RWY 08
IVONA1B, RAPV1B



RAPIV1B SID RWY 08

Navigation specification	Path Descriptor (Recommended)	Waypoint Identifier	Latitude Longitude	Flyover	Course/Track M° (T°)	Distance (NM)	Turn Direction	Altitude (ft)	Speed (Kts)	Remarks
RNAV1	CA				075 (079.8)			+600	-250	
RNAV1	CF	MAGEL	32° 02' 32" N 035° 03' 12" E		075 (079.8)			+3 500	-250	
RNAV1	CF	LAKIF	32°28' 17.2" N 035° 16' 45.2" E		019 (024.0)	28.1	L	+10 000	-250	
RNAV1	TF	GAFAZ	32° 33' 44" N 035° 17' 32" E		002 (006.9)	5.5	L	+10 000	-250	
RNAV1	TF	RAPIV	32° 35' 12" N 034° 55' 54" E		270 (274.7)	18.3	L	+10 000		
RNAV1	TF	IVONA	32° 36' 04.3" N 034° 44' 00.0" E		270 (275.0)	10.1		+10 000		
RNAV1	TF	SUVAS	32° 10' 10" N 033° 59' 33" E		231 (235.7)	45.7	L	+10 000		

IVONA1B SID RWY 08

Navigation specification	Path Descriptor (Recommended)	Waypoint Identifier	Latitude Longitude	Flyover	Course/Track M° (T°)	Distance (NM)	Turn Direction	Altitude (ft)	Speed (Kts)	Remarks
RNAV1	CA				075 (079.8)			+600	-250	
RNAV1	CF	MAGEL	32° 02' 32" N 035° 03' 12" E		075 (079.8)			+3 500	-250	
RNAV1	CF	LAKIF	32°28' 17.2" N 035° 16' 45.2" E		019 (024.0)	28.1	L	+10 000	-250	
RNAV1	TF	GAFAZ	32° 33' 44" N 035° 17' 32" E		002 (006.9)	5.5	L	+10 000	-250	
RNAV1	TF	RAPIV	32° 35' 12" N 034° 55' 54" E		270 (274.7)	18.3	L	+10 000		
RNAV1	TF	IVONA	32° 36' 04.3" N 034° 44' 00.0" E		270 (275.0)	10.1		+10 000		
RNAV1	TF	MERVA	32° 46' 54" N 034° 32' 38" E		313 (318.5)	14.4	R	+10 000		