

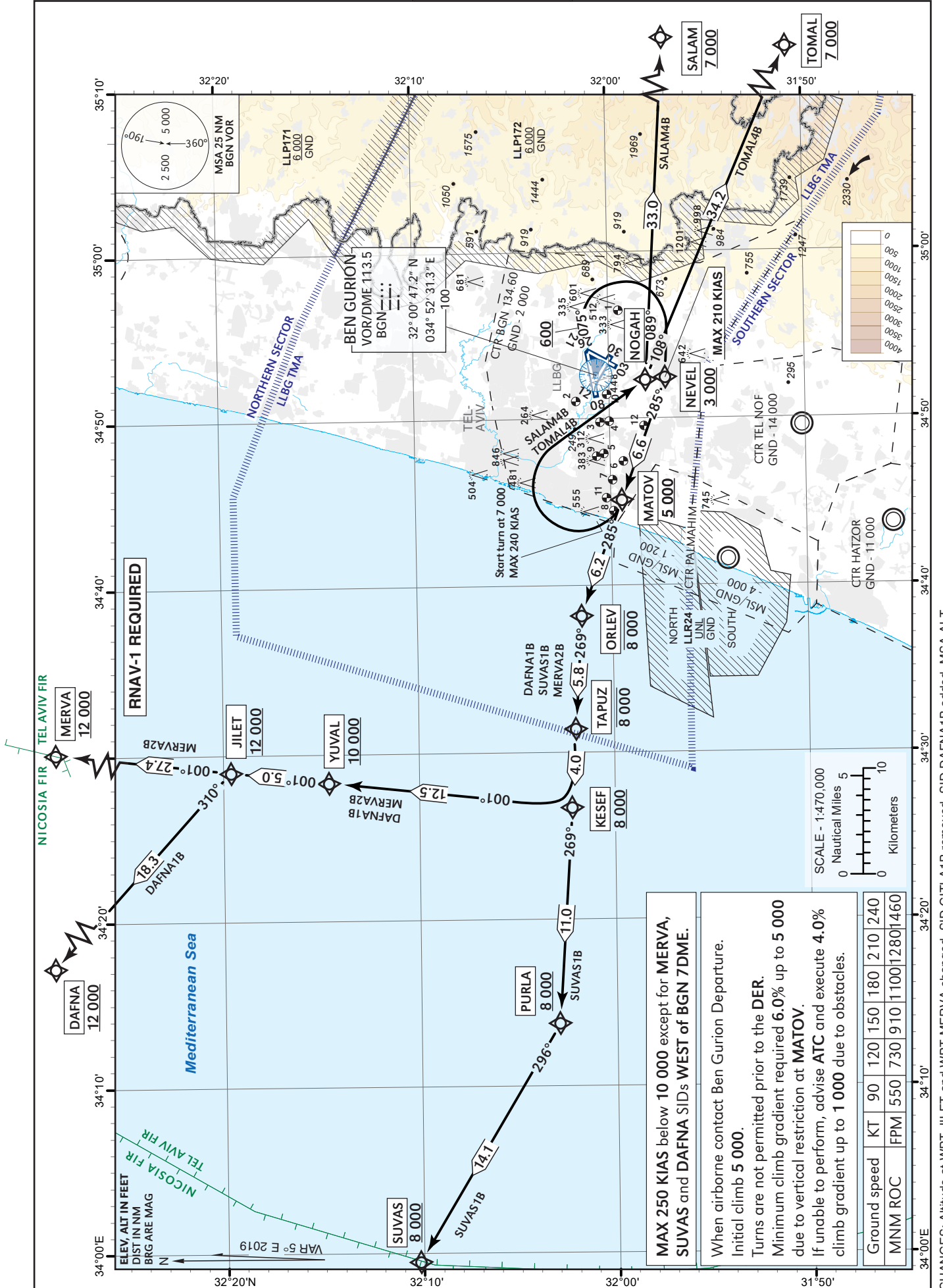
STANDARD INSTRUMENT
DEPARTURE CHART
(SID) - ICAO

TRANSITION
ALTITUDE 18 000

ATIS departue 132.80
TWR 134.60
DEP 120.50
ACC 121.40

TEL-AVIV / BEN-GURION (LLBG)
RWY 08

SALAM4B, TOMAL4B, SUVAS1B, DAFNA1B, MERVA2B



SALAM4B RWY 08

Navigation Specification	Path Descriptor (Recommended)	Waypoint Identifier	Latitude Longitude	Fly-Over	Course/Track M° (T°)	Distance (NM)	Turn Direction	Altitude (ft)	Speed (Kts)	Remarks
RNAV1	CA				075 (079.8)			+600	-210	
RNAV1	DF	NEVEL	31° 57' 08.1"N 034° 52' 25.5" E				R	+3 000	-210	
RNAV1	TF	MATOV	31° 59' 26.0"N 034° 45' 06.0" E		285 (290.2)	6.6		+5 000	-240	
RNAV1	CA				285 (290.1)			@7 000	-240	
RNAV1	DF	NOGAH	31° 58' 08.0"N 034° 52' 19.0" E				R	-8 000 +7 000	-240	
RNAV1	TF	SALAM	31° 56' 00.0"N 035° 31' 00.0" E		089 (093.5)	33.0		+7 000		

TOMAL 4B RWY 08

Navigation Specification	Path Descriptor (Recommended)	Waypoint Identifier	Latitude Longitude	Fly-Over	Course/Track M° (T°)	Distance (NM)	Turn Direction	Altitude (ft)	Speed (Kts)	Remarks
RNAV1	CA				075 (079.8)			+600	-210	
RNAV1	DF	NEVEL	31° 57' 08.1"N 034° 52' 25.5" E				R	+3 000	-210	
RNAV1	TF	MATOV	31° 59' 26.0"N 034° 45' 06.0" E		285 (290.2)	6.6		+5 000	-240	
RNAV1	CA				285 (290.1)			@7 000	-240	
RNAV1	DF	NOGAH	31° 58' 08.0"N 034° 52' 19.0" E				R	-8 000 +7 000	-240	
RNAV1	TF	TOMAL	31° 44' 29.0"N 035° 29' 06.0" E		108 (113.3)	34.2		+7 000		

SUVAS1B RWY 08

Navigation Specification	Path Descriptor (Recommended)	Waypoint Identifier	Latitude Longitude	Fly-Over	Course/Track M° (T°)	Distance (NM)	Turn Direction	Altitude (ft)	Speed (Kts)	Remarks
RNAV1	CA				075 (079.8)			+600	-210	
RNAV1	DF	NEVEL	31° 57' 08.1"N 034° 52' 25.5" E				R	+3 000	-210	
RNAV1	TF	MATOV	31° 59' 26.0"N 034° 45' 06.0" E		285 (290.2)	6.6		+5 000	-250	
RNAV1	TF	ORLEV	32° 01' 35.0"N 034° 38' 12.0" E		285 (290.1)	6.2		-8 000	-250	
RNAV1	TF	TAPUZ	32° 01' 57.0"N 034° 31' 24.0" E		269 (273.7)	5.8	L	-8 000		
RNAV1	TF	KESEF	32° 02' 11.9"N 034° 26' 41.7" E		269 (273.6)	4.0		+8 000		
RNAV1	TF	PURLA	32° 02' 56.0"N 034° 13' 47.0" E		269 (273.8)	11.0		+8 000		
RNAV1	TF	SUVAS	32° 10' 10.0"N 033° 59' 33.0" E		296 (300.9)	14.1	R	+8 000		

DAFNA1B RWY 08

Navigation Specification	Path Descriptor (Recommended)	Waypoint Identifier	Latitude Longitude	Fly-Over	Course/Track M° (T°)	Distance (NM)	Turn Direction	Altitude (ft)	Speed (Kts)	Remarks
RNAV1	CA				075 (079.8)			+600	-210	
RNAV1	DF	NEVEL	31° 57' 08.1"N 034° 52' 25.5" E				R	+3 000	-210	
RNAV1	TF	MATOV	31° 59' 26.0"N 034° 45' 06.0" E		285 (290.2)	6.6		+5 000	-250	
RNAV1	TF	ORLEV	32° 01' 35.0"N 034° 38' 12.0" E		285 (290.1)	6.2		-8 000	-250	
RNAV1	TF	TAPUZ	32° 01' 57.0"N 034° 31' 24.0" E		269 (273.7)	5.8	L	-8 000		
RNAV1	TF	KESEF	32° 02' 11.9"N 034° 26' 41.7" E		269 (273.6)	4.0		+8 000		
RNAV1	TF	YUVAL	32° 14' 36.8"N 034° 28' 20.0" E		001 (006.4)	12.5	R	+10 000		
RNAV1	TF	JILET	32° 19' 35.5"N 034° 28' 59.6" E		001 (006.4)	5.0		+12 000		
RNAV1	TF	DAFNA	32° 32' 36"N 034° 13' 48" E		310 (315.3)	18.3	L	+12 000		

MERVA2B RWY 08

Navigation Specification	Path Descriptor (Recommended)	Waypoint Identifier	Latitude Longitude	Fly-Over	Course/Track M° (T°)	Distance (NM)	Turn Direction	Altitude (ft)	Speed (Kts)	Remarks
RNAV1	CA				075 (079.8)			+600	-210	
RNAV1	DF	NEVEL	31° 57' 08.1"N 034° 52' 25.5" E				R	+3 000	-210	
RNAV1	TF	MATOV	31° 59' 26.0"N 034° 45' 06.0" E		285 (290.2)	6.6		+5 000	-250	
RNAV1	TF	ORLEV	32° 01' 35.0"N 034° 38' 12.0" E		285 (290.1)	6.2		-8 000	-250	
RNAV1	TF	TAPUZ	32° 01' 57.0"N 034° 31' 24.0" E		269 (273.7)	5.8	L	-8 000		
RNAV1	TF	KESEF	32° 02' 11.9"N 034° 26' 41.7" E		269 (273.6)	4.0		+8 000		
RNAV1	TF	YUVAL	32° 14' 36.8"N 034° 28' 20.0" E		001 (006.4)	12.5	R	+10 000		
RNAV1	TF	JILET	32° 19' 35.5"N 034° 28' 59.6" E		001 (006.4)	5.0		+12 000		
RNAV1	TF	MERVA	32° 46' 54.0"N 034° 32' 38.0" E		001 (006.4)	27.4		+12 000		