

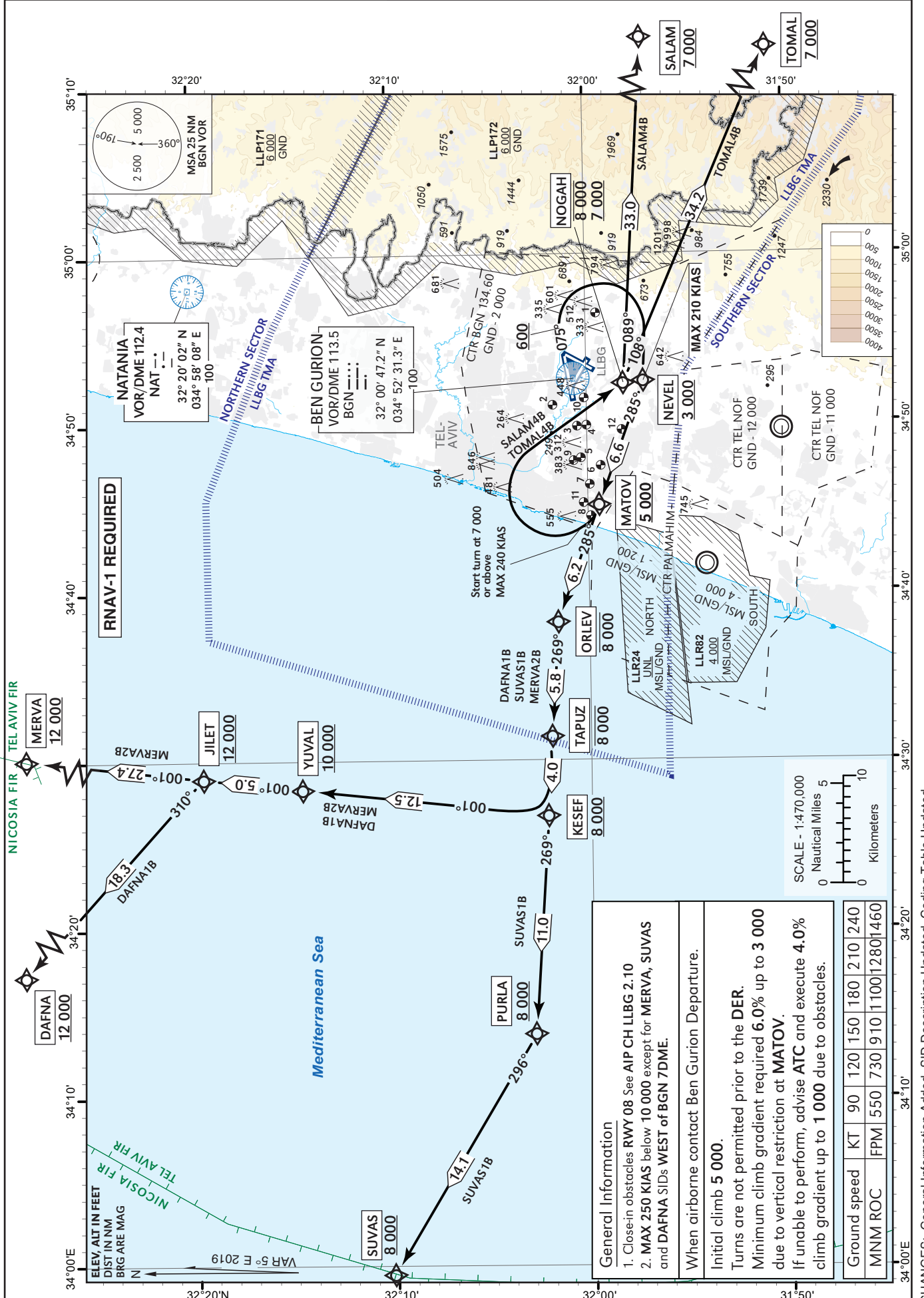
**STANDARD DEPARTURE  
CHART - INSTRUMENT  
(SID) - ICAO**

TRANSITION  
ALTITUDE 18 000

ATIS departue 132.80  
TWR 134.60  
DEP 120.50  
ACC 121.40

**TEL-AVIV / BEN-GURION (LLBG)  
RWY 08**

SALAM4B, TOMAL4B, SUVAS1B, DAFNA1B, MERVA2B



**General Information**

1. Close-in obstacles RWY 08 See AIP CH LLBG 2.10  
 2. MAX 250 KIAS below 10 000 except for MERVA, SUVAS and DAFNA SIDs WEST of BGN 7DME.

When airborne contact Ben Gurion Departure.

Initial climb 5 000.

Turns are not permitted prior to the DER.

Minimum climb gradient required 6.0% up to 3 000 due to vertical restriction at MATOV.

If unable to perform, advise ATC and execute 4.0% climb gradient up to 1 000 due to obstacles.

Ground speed	KT	90	120	150	180	210	240
MNM ROC	FPM	550	730	910	1100	1280	1460

CHANGES: General Information Added, SID Description Updated, Coding Table Updated.

SALAM4B RWY 08

Navigation Specification	Path Descriptor (Recommended)	Waypoint Identifier	Latitude Longitude	Fly-Over	Course/Track M° (T°)	Distance (NM)	Turn Direction	Altitude (ft)	Speed (Kts)	Remarks
RNAV1	CA			-	075 (079.8)			+600	-210	
RNAV1	DF	NEVEL	31° 57' 08.1"N 034° 52' 25.5" E	-			R	+3 000	-210	
RNAV1	TF	MATOV	31° 59' 26.0"N 034° 45' 06.0" E	-	285 (290.2)	6.6		+5 000	-240	
RNAV1	CA			-	285 (290.1)			+7 000	-240	
RNAV1	DF	NOGAH	31° 58' 08.0"N 034° 52' 19.0" E	-			R	-8 000 +7 000	-240	
RNAV1	TF	SALAM	31° 56' 00.0"N 035° 31' 00.0" E	-	089 (093.5)	33.0		+7 000		

TOMAL 4B RWY 08

Navigation Specification	Path Descriptor (Recommended)	Waypoint Identifier	Latitude Longitude	Fly-Over	Course/Track M° (T°)	Distance (NM)	Turn Direction	Altitude (ft)	Speed (Kts)	Remarks
RNAV1	CA			-	075 (079.8)			+600	-210	
RNAV1	DF	NEVEL	31° 57' 08.1"N 034° 52' 25.5" E	-			R	+3 000	-210	
RNAV1	TF	MATOV	31° 59' 26.0"N 034° 45' 06.0" E	-	285 (290.2)	6.6		+5 000	-240	
RNAV1	CA			-	285 (290.1)			+7 000	-240	
RNAV1	DF	NOGAH	31° 58' 08.0"N 034° 52' 19.0" E	-			R	-8 000 +7 000	-240	
RNAV1	TF	TOMAL	31° 44' 29.0"N 035° 29' 06.0" E	-	108 (113.3)	34.2		+7 000		

SUVAS1B RWY 08

Navigation Specification	Path Descriptor (Recommended)	Waypoint Identifier	Latitude Longitude	Fly-Over	Course/Track M° (T°)	Distance (NM)	Turn Direction	Altitude (ft)	Speed (Kts)	Remarks
RNAV1	CA			-	075 (079.8)			+600	-210	
RNAV1	DF	NEVEL	31° 57' 08.1"N 034° 52' 25.5" E	-			R	+3 000	-210	
RNAV1	TF	MATOV	31° 59' 26.0"N 034° 45' 06.0" E	-	285 (290.2)	6.6		+5 000	-250	
RNAV1	TF	ORLEV	32° 01' 35.0"N 034° 38' 12.0" E	-	285 (290.1)	6.2		-8 000	-250	
RNAV1	TF	TAPUZ	32° 01' 57.0"N 034° 31' 24.0" E	-	269 (273.7)	5.8	L	-8 000		
RNAV1	TF	KESEF	32° 02' 11.9"N 034° 26' 41.7" E	-	269 (273.6)	4.0		+8 000		
RNAV1	TF	PURLA	32° 02' 56.0"N 034° 13' 47.0" E	-	269 (273.8)	11.0		+8 000		
RNAV1	TF	SUVAS	32° 10' 10.0"N 033° 59' 33.0" E	-	296 (300.9)	14.1	R	+8 000		

**DAFNA1B RWY 08**

Navigation Specification	Path Descriptor (Recommended)	Waypoint Identifier	Latitude Longitude	Fly-Over	Course/Track M° (T°)	Distance (NM)	Turn Direction	Altitude (ft)	Speed (Kts)	Remarks
RNAV1	CA			-	075 (079.8)			+600	-210	
RNAV1	DF	NEVEL	31° 57' 08.1"N 034° 52' 25.5" E	-			R	+3 000	-210	
RNAV1	TF	MATOV	31° 59' 26.0"N 034° 45' 06.0" E	-	285 (290.2)	6.6		+5 000	-250	
RNAV1	TF	ORLEV	32° 01' 35.0"N 034° 38' 12.0" E	-	285 (290.1)	6.2		-8 000	-250	
RNAV1	TF	TAPUZ	32° 01' 57.0"N 034° 31' 24.0" E	-	269 (273.7)	5.8	L	-8 000		
RNAV1	TF	KESEF	32° 02' 11.9"N 034° 26' 41.7" E	-	269 (273.6)	4.0		+8 000		
RNAV1	TF	YUVAL	32° 14' 36.8"N 034° 28' 20.0" E	-	001 (006.4)	12.5	R	+10 000		
RNAV1	TF	JILET	32° 19' 35.5"N 034° 28' 59.6" E	-	001 (006.4)	5.0		+12 000		
RNAV1	TF	DAFNA	32° 32' 36"N 034° 13' 48" E	-	310 (315.3)	18.3	L	+12 000		

**MERVA2B RWY 08**

Navigation Specification	Path Descriptor (Recommended)	Waypoint Identifier	Latitude Longitude	Fly-Over	Course/Track M° (T°)	Distance (NM)	Turn Direction	Altitude (ft)	Speed (Kts)	Remarks
RNAV1	CA			-	075 (079.8)			+600	-210	
RNAV1	DF	NEVEL	31° 57' 08.1"N 034° 52' 25.5" E	-			R	+3 000	-210	
RNAV1	TF	MATOV	31° 59' 26.0"N 034° 45' 06.0" E	-	285 (290.2)	6.6		+5 000	-250	
RNAV1	TF	ORLEV	32° 01' 35.0"N 034° 38' 12.0" E	-	285 (290.1)	6.2		-8 000	-250	
RNAV1	TF	TAPUZ	32° 01' 57.0"N 034° 31' 24.0" E	-	269 (273.7)	5.8	L	-8 000		
RNAV1	TF	KESEF	32° 02' 11.9"N 034° 26' 41.7" E	-	269 (273.6)	4.0		+8 000		
RNAV1	TF	YUVAL	32° 14' 36.8"N 034° 28' 20.0" E	-	001 (006.4)	12.5	R	+10 000		
RNAV1	TF	JILET	32° 19' 35.5"N 034° 28' 59.6" E	-	001 (006.4)	5.0		+12 000		
RNAV1	TF	MERVA	32° 46' 54.0"N 034° 32' 38.0" E	-	001 (006.4)	27.4		+12 000		