

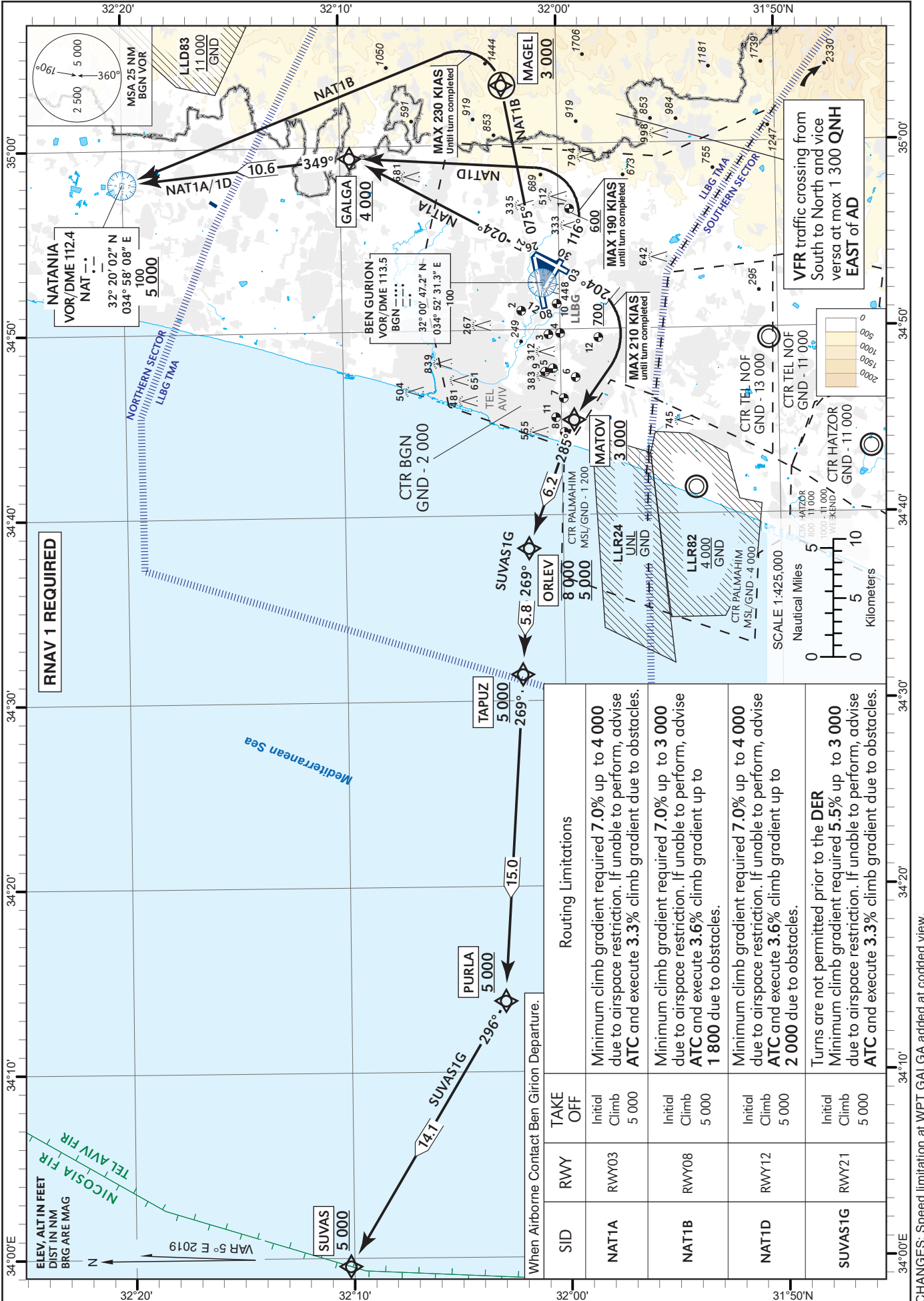
STANDARD INSTRUMENT
DEPARTURE CHART
(RNAV SID) - ICAO

TRANSITION ALT 18 000

AD ELEV 134 ft

ATIS DEP. 132.80
TWR 134.60
DEP 120.50
ACC 121.40

TEL-AVIV / BEN-GURION (LLBG)
RWYs 03, 08, 12, 21
NAT1A/1B/1D, SUVAS1G



SID	RWY	TAKE OFF	Routing Limitations
NAT1A	RWY03	Initial Climb 5 000	Minimum climb gradient required 7.0% up to 4 000 due to airspace restriction. If unable to perform, advise ATC and execute 3.3% climb gradient due to obstacles.
NAT1B	RWY08	Initial Climb 5 000	Minimum climb gradient required 7.0% up to 3 000 due to airspace restriction. If unable to perform, advise ATC and execute 3.6% climb gradient up to 1 800 due to obstacles.
NAT1D	RWY12	Initial Climb 5 000	Minimum climb gradient required 7.0% up to 4 000 due to airspace restriction. If unable to perform, advise ATC and execute 3.6% climb gradient up to 2 000 due to obstacles.
SUVAS1G	RWY21	Initial Climb 5 000	Turns are not permitted prior to the DER Minimum climb gradient required 5.5% up to 3 000 due to airspace restriction. If unable to perform, advise ATC and execute 3.3% climb gradient due to obstacles.

CHANGES: Speed limitation at WPT GALGA added at coded view.

SUVAS1G SID RWY 21

Navigation specification	Path Descriptor (Recommended)	Waypoint Identifier	Latitude Longitude	Flyover	Course/Track M° (T°)	Distance (NM)	Turn Direction	Altitude (ft)	Speed (Kts)	Remarks
RNAV1	CA				204 (208.8)			+700	-210	
RNAV1	DF	MATOV	31° 59' 26.0" N 034° 45' 06.0" E				R	+3 000	-210	
RNAV1	TF	ORLEV	32° 01' 35.0" N 034° 38' 12.0" E		285 (290.1)	6.2	L	-8 000 +5 000		
RNAV1	TF	TAPUZ	32° 01' 57.0" N 034° 31' 24.0" E		269 (273.7)	5.8		+5 000		
RNAV1	TF	PURLA	32° 02' 56.0" N 034° 13' 47.0" E		269 (273.9)	15.0		+5 000		
RNAV1	TF	SUVAS	32° 10' 10.0" N 033° 59' 33.0" E		296 (300.9)	14.1	R	+5 000		

NAT1D SID RWY 12

Navigation specification	Path Descriptor (Recommended)	Waypoint Identifier	Latitude Longitude	Flyover	Course/Track M° (T°)	Distance (NM)	Turn Direction	Altitude (ft)	Speed (Kts)	Remarks
RNAV1	CA				116 (121.4)			+600	-190	
RNAV1	DF	GALGA	32° 09' 25.1" N 034° 59' 24.1" E				L	+4 000	-190	
RNAV1	TF	NAT	32° 20' 02.0" N 034° 58' 08.0" E		349 (354.2)	10.6		+5 000		

NAT1B SID RWY 08

Navigation specification	Path Descriptor (Recommended)	Waypoint Identifier	Latitude Longitude	Flyover	Course/Track M° (T°)	Distance (NM)	Turn Direction	Altitude (ft)	Speed (Kts)	Remarks
RNAV1	CF	MAGEL	32° 02' 32.0" N 035° 03' 12.0" E	Y	075 (079.8)			+3 000	-230	
RNAV1	DF	NAT	32° 20' 02.0" N 034° 58' 08.0" E				L	+5 000	-230	

NAT1A SID RWY 03

Navigation specification	Path Descriptor (Recommended)	Waypoint Identifier	Latitude Longitude	Flyover	Course/Track M° (T°)	Distance (NM)	Turn Direction	Altitude (ft)	Speed (Kts)	Remarks
RNAV1	CF	GALGA	32° 09' 25.1" N 034° 59' 24.1" E		024 (028.8)			+4 000		
RNAV1	TF	NAT	32° 20' 02.0" N 034° 58' 08.0" E		349 (354.2)	10.6	L	+5 000		