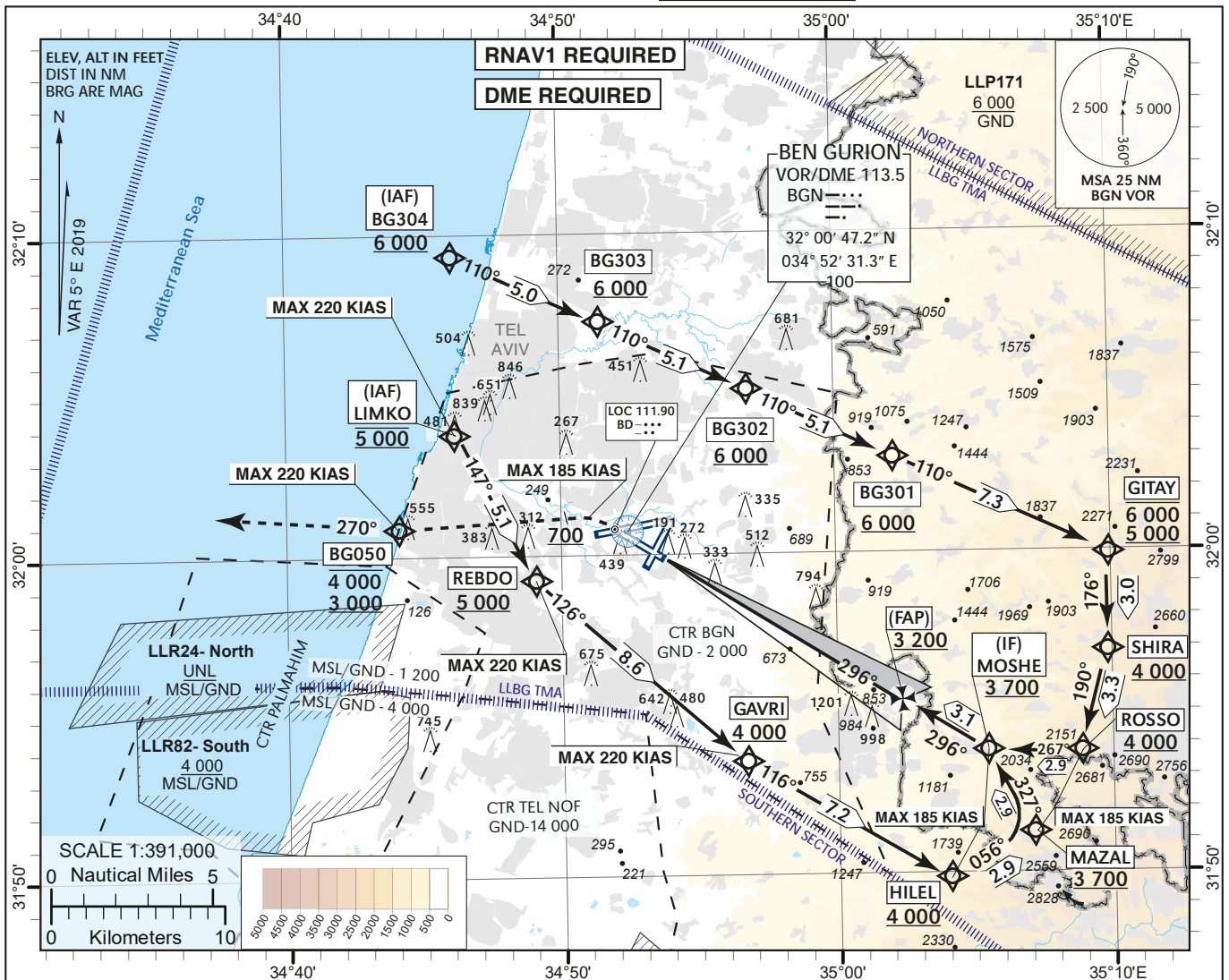


INSTRUMENT APPROACH  
CHART - ICAO

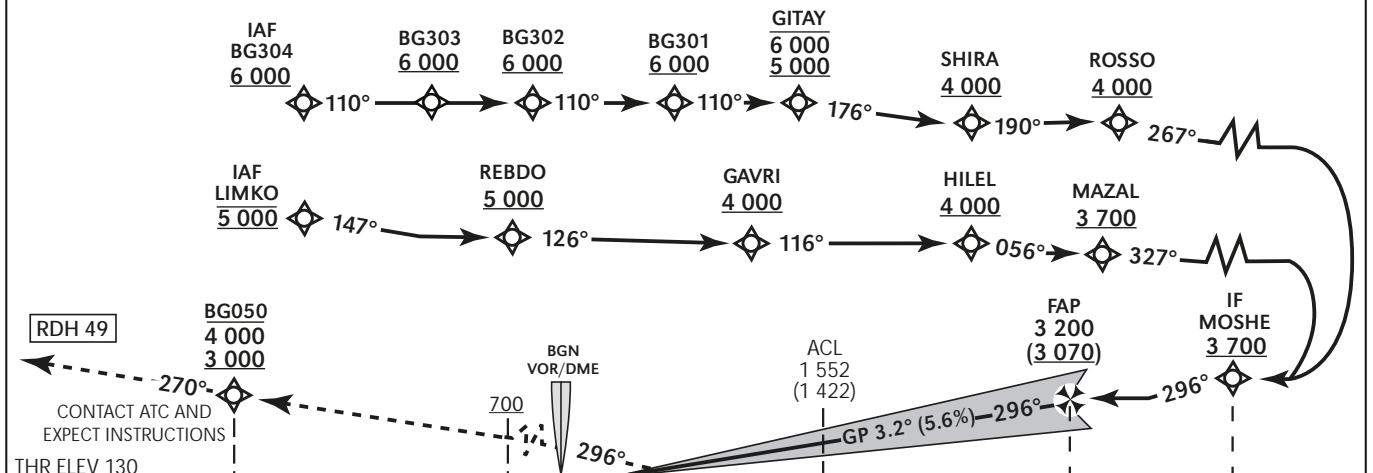
AERODROME ELEV 134 ft  
HEIGHTS RELATED TO  
THR RWY 30 - ELEV 130 ft

ATIS Arrival 132.50  
ARR 131.10  
APP 120.50  
TWR 134.60

TEL-AVIV / BEN-GURION (LLBG)  
ILS RWY 30



RWY30 BD ILS DME	1	2	3	4	5	6	7	8	8.7
ALT (HGT)	520 (390)	870 (740)	1 210 (1 080)	1 560 (1 430)	1 900 (1 770)	2 250 (2 120)	2 610 (2 480)	2 960 (2 830)	3 200 (3 080)



RDH 49  
CONTACT ATC AND EXPECT INSTRUCTIONS  
THR ELEV 130  
NM to THR RWY 30  
BD ILS DME reads ZERO at RWY 30 THR

**MISSED APPROACH:**  
Initial climb 4 000. Climb on course 296° (MAX 185 KIAS), at or above 700, turn LEFT direct to BG050 (MAX 220 KIAS) BTN 3 000 and 4 000. Continue on track 270°, climb to 4 000, contact ATC and expect instructions.  
BG050 at 3 000 requires a 5.9% minimum climb gradient due to airspace restrictions, if unable inform ATC.

STA	OCA(H)	CAT I	A	B	C	D
	321		321	333	341	352
	(191)		(191)	(203)	(211)	(222)

**RWY 30 ILS CAT I From LIMKO**

Navigation Specification	Path Descriptor (Recommended)	Waypoint Identifier	Latitude Longitude	Fly-Over	Course/Track M° (T°)	Distance (NM)	Turn Direction	Altitude (ft)	Speed (Kts)	Remarks
RNAV1	IF	LIMKO	32° 03' 48" N 34° 46' 18" E	—				@5 000	-220	IAF
RNAV1	TF	REBDO	31° 59' 17" N 34° 49' 04" E	—	147 (152.4)	5.1		+5 000	-220	
RNAV1	TF	GAVRI	31° 53' 35" N 34° 56' 44" E	—	126 (131.1)	8.6	L	+4 000	-220	
RNAV1	TF	HILEL	31° 49' 53" N 35° 04' 02" E	—	116 (120.7)	7.2		+4 000	-185	
RNAV1	TF	MAZAL	31° 51' 17" N 35° 07' 04" E	—	056 (061.5)	2.9	L	+3 700	-185	
RNAV1	TF	MOSHE	31° 53' 49.36" N 35° 05' 28.75" E	—	327 (331.6)	2.9	L	+3 700	-185	IF

**RWY 30 ILS CAT I From BG304**

Navigation Specification	Path Descriptor (Recommended)	Waypoint Identifier	Latitude Longitude	Fly-Over	Course/Track M° (T°)	Distance (NM)	Turn Direction	Altitude (ft)	Speed (Kts)	Remarks
RNAV1	IF	BG304	32° 09' 24" N 34° 45' 58" E	—				+6 000		IAF
RNAV1	TF	BG303	32° 07' 17.7" N 34° 51' 18" E	—	110 (114.8)	5.0		+6 000		
RNAV1	TF	BG302	32° 05' 09.5" N 34° 56' 42" E	—	110 (114.8)	5.1		+6 000		
RNAV1	TF	BG301	32° 03' 00.9" N 35° 02' 06" E	—	110 (114.8)	5.1		+6 000		
RNAV1	TF	GITAY	31° 59' 55" N 35° 09' 53" E	—	110 (114.8)	7.3		- 6 000 +5 000		
RNAV1	TF	SHIRA	31° 56' 55"N 35° 09' 50" E	—	176 (180.8)	3.0		+4 000		
RNAV1	TF	ROSSO	31° 53' 46" N 35° 08' 51" E	—	190 (195.0)	3.3		+4 000	-185	
RNAV1	TF	MOSHE	31° 53' 49.36" N 35° 05' 28.75" E	—	267 (271.8)	2.9	R	+3 700	-185	IF

GP angle (Slope)	3.20° (5.59%)
------------------	---------------

**Standard missed approach**

Navigation Specification	Path Descriptor (Recommended)	Waypoint Identifier	Latitude Longitude	Fly-Over	Course/Track M° (T°)	Distance (NM)	Turn Direction	Altitude (ft)	Speed (Kts)	Remarks
RNAV1	CA				296 (301.3)			+700	-185	
RNAV1	DF	BG050	32° 00' 56" N 034° 44' 06" E				L	- 4 000 +3 000	-220	
RNAV1	FM				270 (275.4)		R	+3 000		