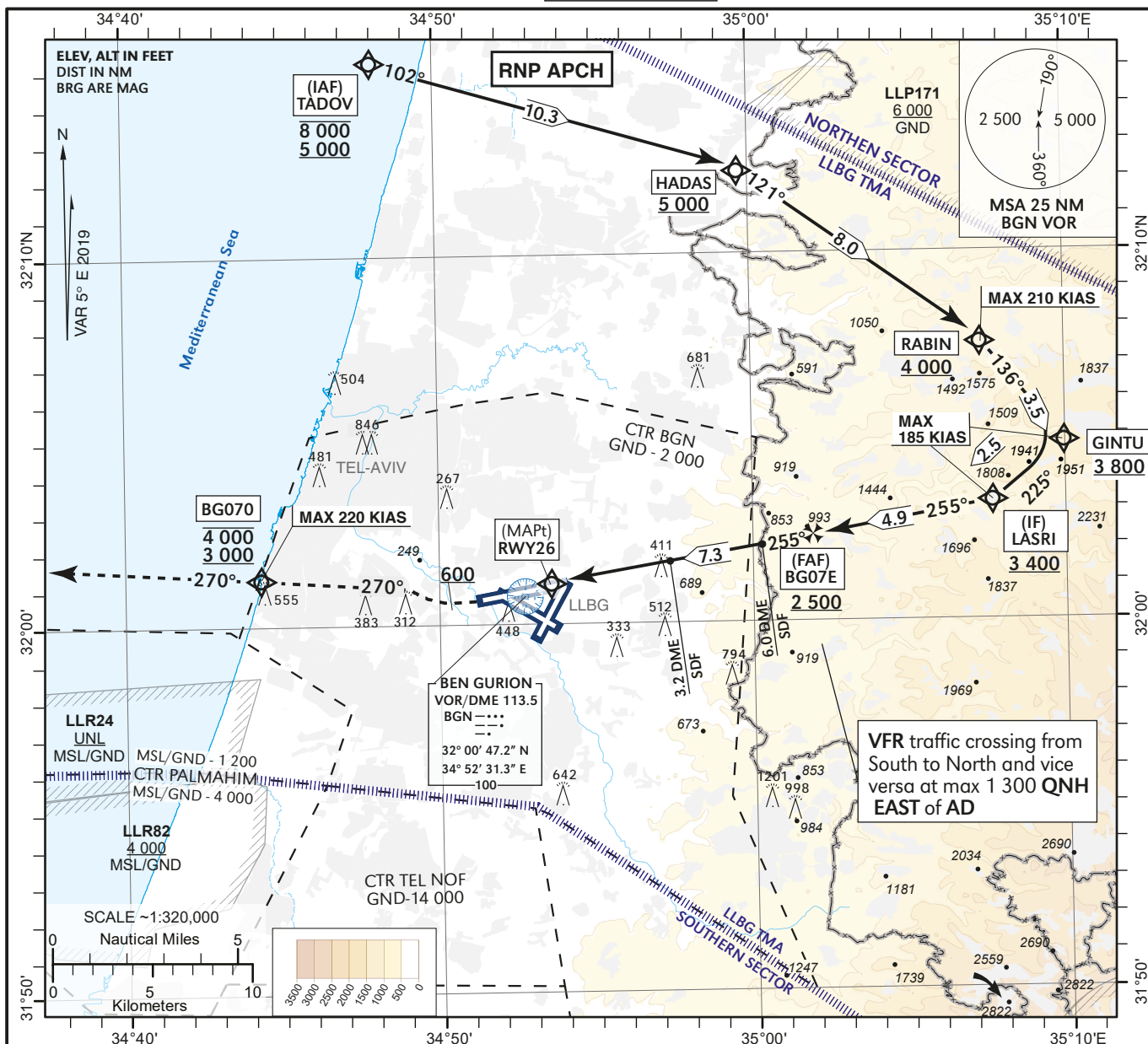


INSTRUMENT
APPROACH
CHART - ICAO

AERODROME ELEV 134 ft
HEIGHTS RELATED TO
THR RWY 26 - ELEV 124 ft

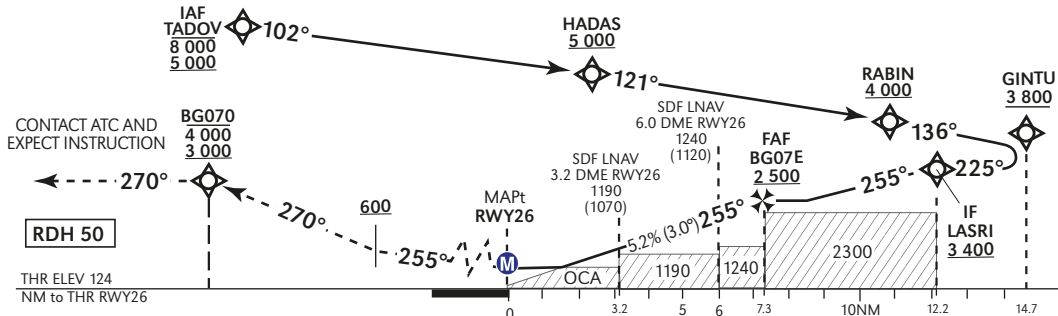
ATIS Arrival 132.50
ARR 131.10
APP 120.50
TWR 134.60

TEL-AVIV / BEN-GURION (LLBG)
RNP RWY 26



TRANSITION ALT 18 000	RWY26	2	3	4	5	6	7
	ALT (HGT)	810 (690)	1 130 (1 010)	1 450 (1 330)	1 770 (1 650)	2 090 (1 960)	2 410 (2 280)

MISSED APPROACH:
Initial climb 4 000. Climb on course 255°. At or above 600, turn RIGHT on course 270° (MAX 220 KIAS) to BG070 BTN 3 000 and 4 000 (MAX 220 KIAS). Continue on track 270° climbing to 4 000, contact ATC and expect instructions. BG070 at 3 000 requires a 4.6% minimum climb gradient due to airspace restrictions. If unable inform ATC.



OCA (OCH)	A	B	C	D			
LNAV	2.5%	660 (540)					
LNAV/VNAV	2.5%	390 (270)	400 (280)	420 (300)	450 (330)		
CIRCLING	N/A						
GS	KT	80	100	120	140	160	180
ROD: 5.2%	ft/min	425	531	637	743	850	956

BARO-VNAV temperature
MNM -10°c/MAX 60°c
Effective VPA at 0°c is 2.8°
Effective VPA at 45°c is 3.3°

CHANGES: Re-Designed Chart.

RNP RWY 26

Navigation Specification	Path Descriptor (Recommended)	Waypoint Identifier	Latitude Longitude	Fly-Over	Course/Track M° (T°)	Distance (NM)	Turn Direction	Altitude (ft)	Speed (Kts)	Remarks
RNAV1	IF	TADOV	32° 15' 15"N 034° 48' 00" E	-				-8 000 +5 000		IAF
RNAV1	TF	HADAS	32° 12' 13"N 034° 59' 40" E	-	102 (107.0)	10.3		+5 000		
RNAV-1	TF	RABIN	32° 07' 32.2" N 35° 07' 20.9" E	-	121 (125.6)	8.0	R	+4 000	-210	
RNAV-1	TF	GINTU	32° 04' 48" N 35° 09' 58" E	-	136 (140.7)	3.5		+3 800	-185	
RNAV-1	TF	LASRI	32° 03' 12" N 35° 07' 42" E	-	225 (230.4)	2.5	R	+3 400	-185	IF
RNAV-1	TF	BG07E	32° 02' 21" N 35° 02' 01" E	-	255 (260.0)	4.9	R	+2 500		FAF
RNP APCH	TF	RWY26	32° 01' 04" N 34° 53' 34" E	Y	255 (260.0)	7.3		+174		MAPt

RNP RWY 26 - Missed Approach

Navigation Specification	Path Descriptor (Recommended)	Waypoint Identifier	Latitude Longitude	Fly-Over	Course/Track M° (T°)	Distance (NM)	Turn Direction	Altitude (ft)	Speed (Kts)	Remarks
RNAV-1	CA			-	255 (260.0)			+600	-220	
RNAV-1	CF	BG070	32° 01' 16" N 34° 44' 20" E	-	270 (275)		R	- 4000 + 3000	-220	
RNAV-1	FM	BG070	32° 01' 16" N 34° 44' 20" E	-	270 (275)			- 4000 + 3000		