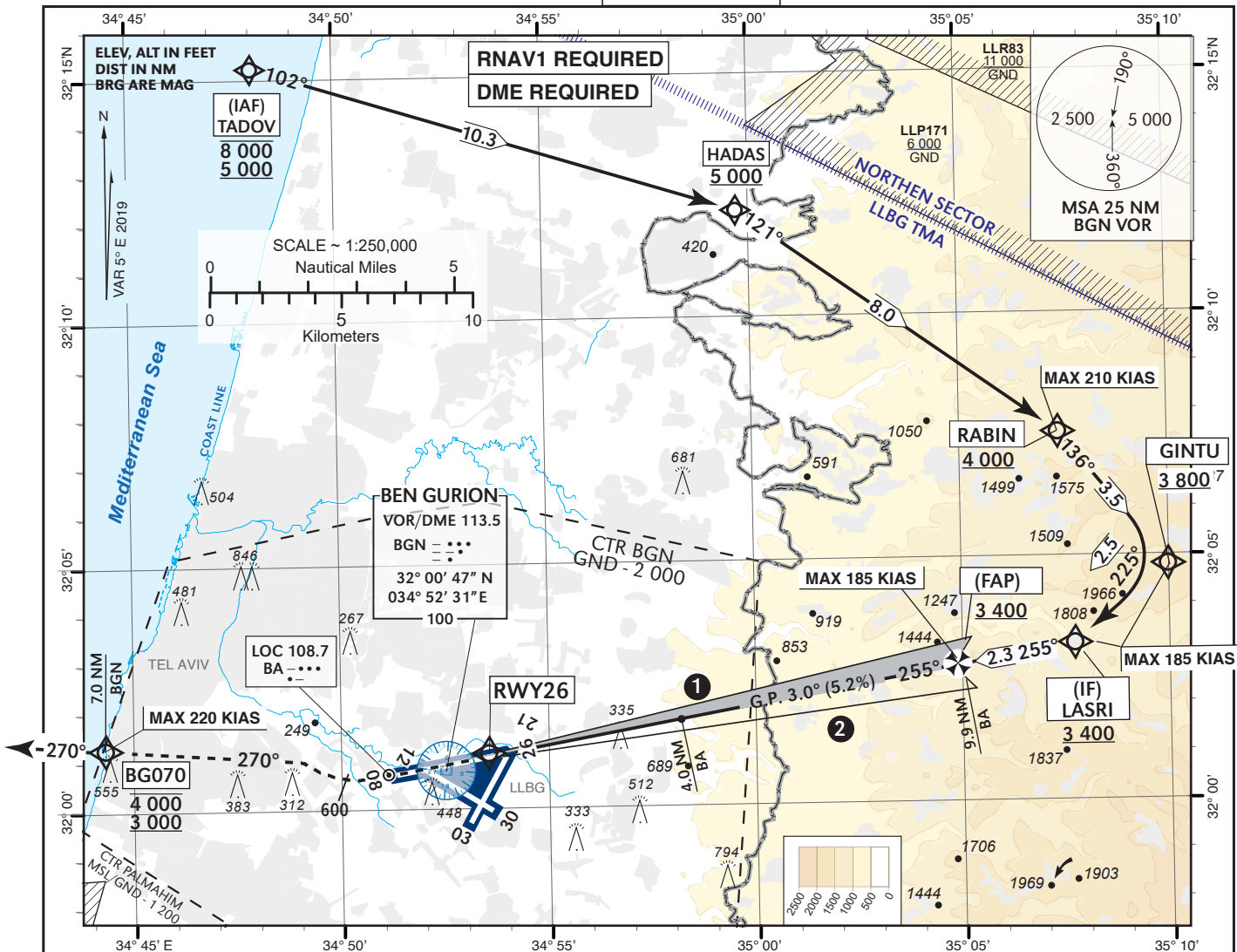


INSTRUMENT AD ELEV **134 ft**
APPROACH HEIGHTS RELATED TO
CHART - ICAO THR RWY 26 - ELEV **124 ft**

ATIS Arrival 132.50
ARR 131.10
APP 120.50
TWR 134.60

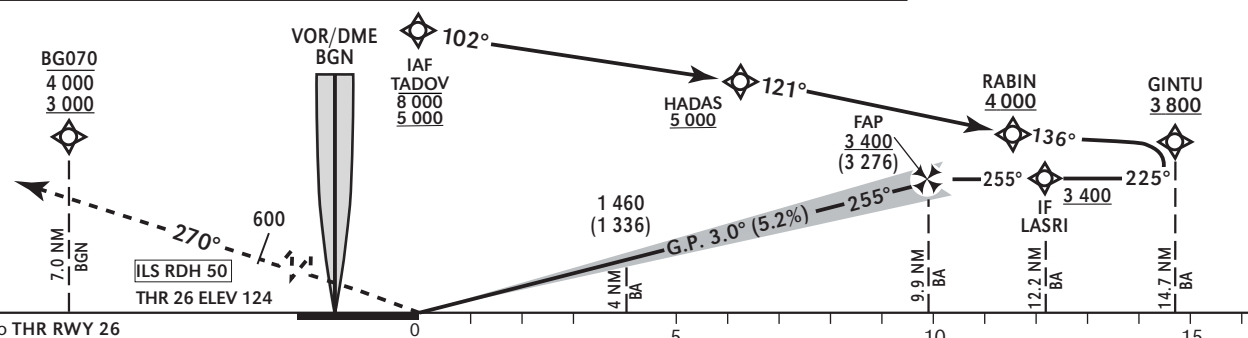
TEL- AVIV / BEN-GURION (LLBG)
ILS RWY 26



BA ILS DME	1.0	2.0	3.0	4.0	5.0	6.0	7.0	8.0	9.0
ALT (HAT)	500 (376)	820 (696)	1 140 (1 016)	1 460 (1 336)	1 790 (1 666)	2 120 (1 996)	2 450 (2 326)	2 780 (2 656)	3 110 (2 986)

MISSED APPROACH: Initial climb 4 000. Climb on course 255°.
 At or above 600, turn **RIGHT** on course 270° (**MAX 220 KIAS**) to **BG070**, **BTN 3 000** and **4 000 (MAX 220 KIAS)**. Continue on track 270°, contact **ATC** and expect instructions. **BG070** at 3 000 requires a 6% minimum climb gradient due to airspace restrictions. If unable inform **ATC**.

TRANSITION ALT 18 000



NM to THR RWY 26
 BA ILS DME reads zero at RWY 26 THR

CAT	A	B	C	D			
OCA(H)	270 (146)	282 (158)	290 (166)	300 (176)			
GS	KT	90	110	130	150	170	190
ROD: 5.2%	FPM	478	584	690	796	902	1008

- 1** GP INOP + CIRCLING - not Authorized.
- 2** VFR traffic crossing from South to North and vice versa at max 1 300 QNH EAST of AD.

CHANGES: Revised Procedure

LLBG RWY26 ILS CAT I Initial Approach

Navigation specification	Path Descriptor (Recommended)	Waypoint Identifier	Latitude Longitude	Flyover	Course/Track M° (T°)	Distance (NM)	Turn Direction	Altitude (ft)	Speed (Kts)	Remarks
RNAV1	IF	TADOV	32° 15' 15"N 034° 48' 00" E	-				-8 000 +5 000		IAF
RNAV1	TF	HADAS	32° 12' 13"N 034° 59' 40" E	-	102 (107.0)	10.3		+5 000		
RNAV1	TF	RABIN	32° 07' 32.2" N 035° 07' 20.9" E	-	121 (125.6)	8.0	R	+4 000	-210	
RNAV1	TF	GINTU	32° 04' 48.4" N 035° 09' 58.2" E	-	136 (140.7)	3.5	R	+3 800	-185	
RNAV1	TF	LASRI	32° 03' 12.4" N 035° 07' 41.7" E	-	225 230.4)	2.5	R	+3 400	-185	IF

RWY26 ILS Intermediate and Final Approach

Fix	Fix Coordinates	True Azimuth (M) (reference)	DME distance
IF	32° 03' 12.4" N 035° 07' 41.7" E	079.8 true (075) (LOC26)	12.2 DME BA * 13.1 DME BGN
FAP	32° 02' 47.9" N 035° 04' 59.1" E	079.8 true (075) (LOC26)	9.9 DME BA * 10.8 DME BGN
RWY26	32° 01' 03.8" N 034° 53' 33.9" E		0.9 DME BGN

* 0 at THR

ILS RWY26 Missed Approach

Navigation specification	Path Descriptor (Recommended)	Waypoint Identifier	Latitude Longitude	Flyover	Course/Track M° (T°)	Distance (NM)	Turn Direction	Altitude (ft)	Speed (Kts)	Remarks
RNAV 1	CA			-	255 (260.0)			+600	-220	
RNAV 1	CF	BG070	32° 01' 16" N 034° 44' 20" E	-	270 (275.0)		R	-4 000 +3 000	-220	
RNAV 1	FM	BG070	32° 01' 16" N 034° 44' 20" E	-	270 (275.0)			-4 000 +3 000		