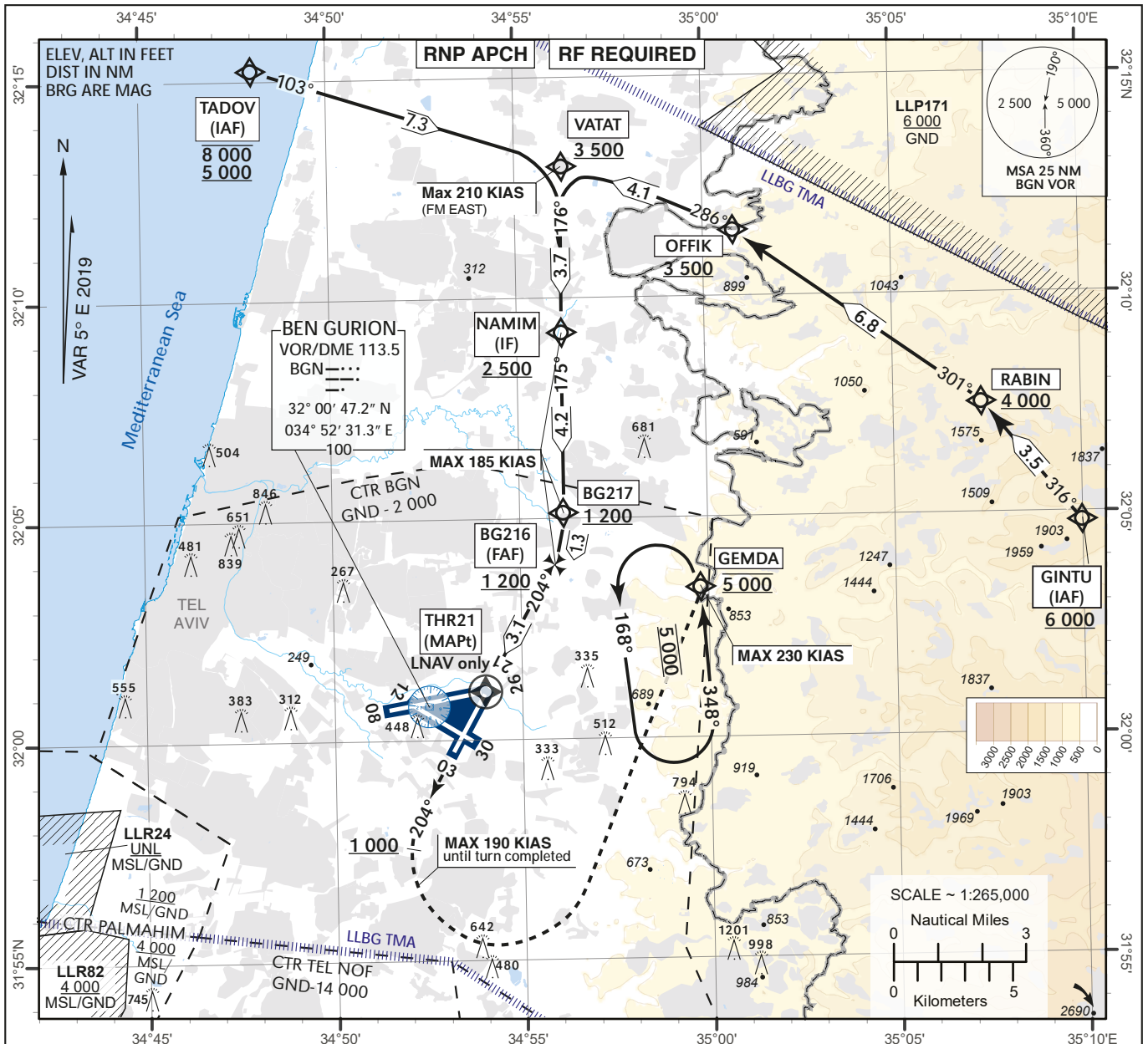


**INSTRUMENT
APPROACH
CHART - ICAO**

AD ELEV **134 ft** TRANSITION ALT 18 000

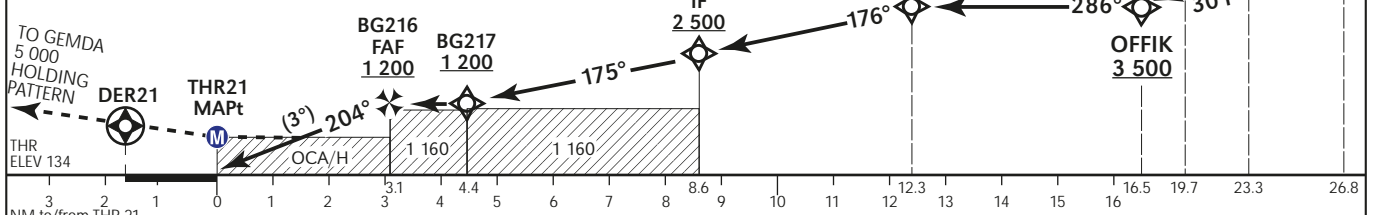
ATIS Arrival 132.50
ARR 131.10
APP 120.50
TWR 134.60

**TEL-AVIV / BEN-GURION (LLBG)
RNP Y RWY 21**



MISSED APPROACH:
Initial climb 5 000. Climb straight to DER 21. Upon reaching 1 000 turn LEFT (MAX 190 KIAS) to GEMDA 5 000 and HOLD.
Note: Climb GRAD. requirement of 4.5% (270/NM) due to airspace restrictions. If unable to comply advise ATC.

NM to RWY 21	1	2	3
ALTITUDE (HGT)	500 (366)	820 (686)	1140 (1006)
	RDH 50FT		



STRAIGHT IN APPROACH	OCA (OCH)	A	B	C	D
	RNAV	730(596)			
	RNAV/VNAV	400(270)	410(280)	420(290)	430(300)
CIRCLING		N/A			

REMARK:
For uncompensated Baro-VNAV system: Baro VNAV Temperature MNM - 10°C/MAX 60°C Effective VPA at 0°C is 2.8° Effective VPA at 45°C is 3.3°

Ground Speed	KT	80	100	120	140	160	180
Rate of descent: 5.2%	ft/min	424	531	637	743	849	955

CHANGES: OCA Updated, Seg. Length Between VATAT and NAMIM Updated

LLBG - RNP Y RWY 21 (FROM TADOV)

Navigation Specification	Path Descriptor (Recommended)	Waypoint Identifier	Latitude Longitude	Fly-Over	Course/Track M° (T°)	Distance (NM)	Turn Direction	Altitude (ft)	Speed (Kts)	Remarks
RNAV1	IF	TADOV	32° 15' 15" N 034° 48' 00" E					-8 000 +5 000		IAF
RNAV1	TF	VATAT	32° 13' 00.0" N 034° 56' 13.0" E		103 (107.8)	7.3		+3 500		
RNP APCH	TF	NAMIM	32° 09' 15" N 034° 56' 09" E		176 (180.9)	3.7		+2 500		IF
RNP APCH	TF	BG217	32° 05' 03.8" N 034° 56' 10.0" E		175 (179.5)	4.2		+1 200	-185	
RNP APCH	RF Center BG999 32° 05' 04.6" N 034° 53' 10.0" E r=2.55NM	BG216	32° 03' 50.7" N 034° 55' 47.7" E			1.3	R	+1 200	-185	FAF
RNP APCH	TF	THR21	32° 01' 05.2" N 034° 54' 00.8" E	Y	204 (208.8)	3.1		+183		MAPt

LLBG - RNP Y RWY 21 (FROM GINTU)

Navigation Specification	Path Descriptor (Recommended)	Waypoint Identifier	Latitude Longitude	Fly-Over	Course/Track M° (T°)	Distance (NM)	Turn Direction	Altitude (ft)	Speed (Kts)	Remarks
RNAV1	IF	GINTU	32° 04' 48" N 035° 09' 58" E					+6 000		IAF
RNAV1	TF	RABIN	32° 07' 32" N 035° 07' 21" E		316 (320.8)	3.5		+4 000		
RNAV1	TF	OFFIK	32° 11' 31.5" N 035° 00' 48.2" E		301 (305.7)	6.8		+3 500		
RNAV1	TF	VATAT	32° 13' 00.0" N 034° 56' 13.0" E		286 (290.7)	4.1		+3 500	-210	
RNP APCH	TF	NAMIM	32° 09' 15" N 034° 56' 09" E		176 (180.9)	3.8		+2 500	-185	IF
RNP APCH	TF	BG217	32° 05' 03.8" N 034° 56' 10.0" E		175 (179.5)	4.2		+1 200	-185	
RNP APCH	RF Center BG999 32° 05' 04.6" N 034° 53' 10.0" E r=2.55NM	BG216	32° 03' 50.7" N 034° 55' 47.7" E			1.3	R	+1 200	-185	FAF
RNP APCH	TF	THR21	32° 01' 05.2" N 034° 54' 00.8" E	Y	204 (208.8)	3.1		+183		MAPt

Standard missed approach

Navigation Specification	Path Descriptor (Recommended)	Waypoint Identifier	Latitude Longitude	Fly-Over	Course/Track M° (T°)	Distance (NM)	Turn Direction	Altitude (ft)	Speed (Kts)	Remarks
RNAV1	CA				204 (208.9)			+1 000	-190	
RNAV1	DF	GEMDA	32° 03' 26" N 034° 59' 48" E	Y			L	@5 000	-190	
RNAV1	HM	GEMDA	32° 03' 26" N 034° 59' 48" E	Y	348 (353)		L	@5 000	-230	

Holding Identification

Holding Fix	Latitude Longitude	Inbound Course/Track M° (T°)	MAX IAS (Kts)	Altitude (ft)	Outbound Time / Distance	Turn Direction
GEMDA	32° 03' 26.0" N 034° 59' 48.0" E	348 (353.0)	-230	@5 000	1 Min	L