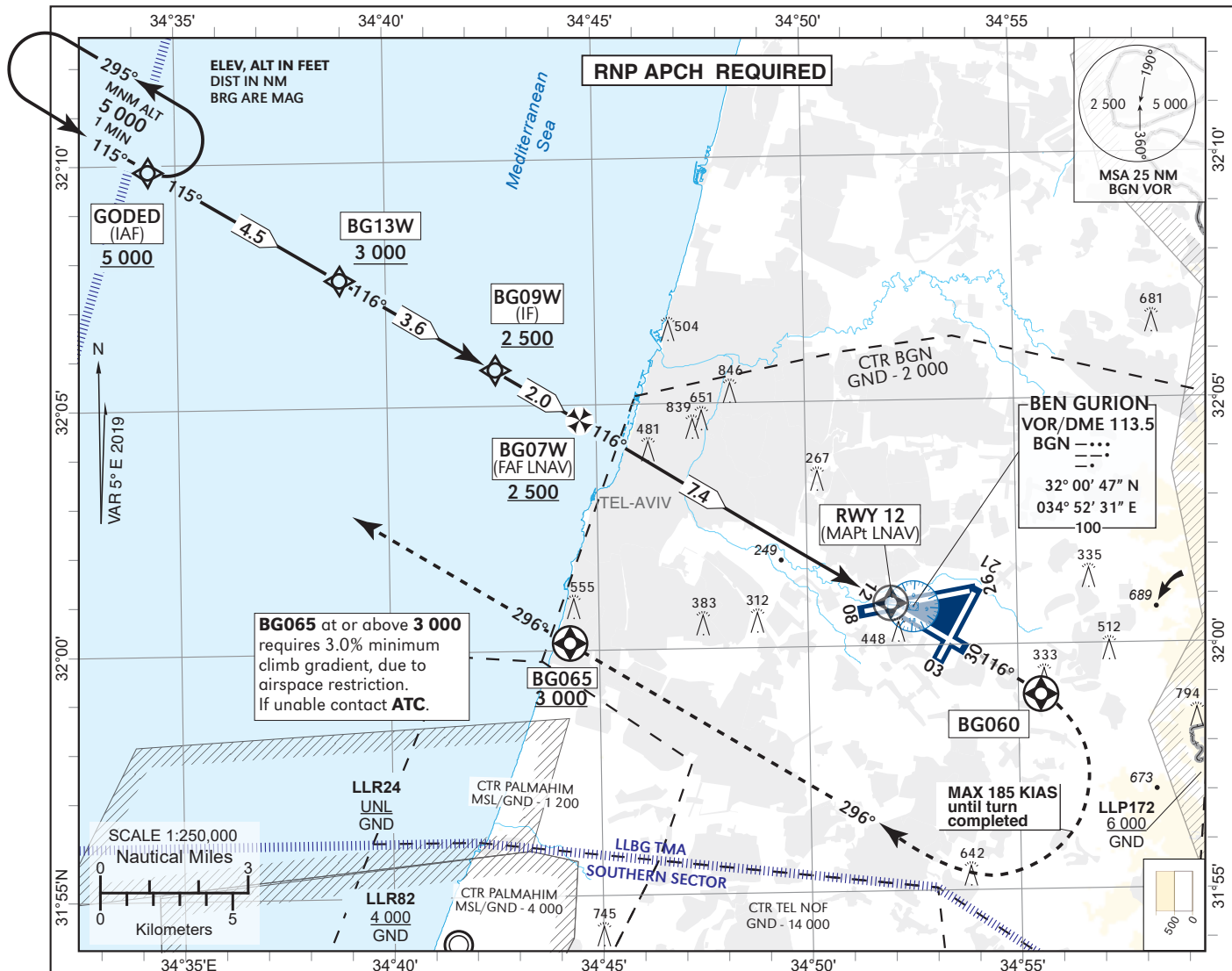


**INSTRUMENT
APPROACH
CHART - ICAO**

AD ELEV **134 ft**
HEIGHTS RELATED TO
THR RWY 12 - ELEV **103 ft**

ATIS Arrival **132.50**
APP **120.50**
TWR **134.60**

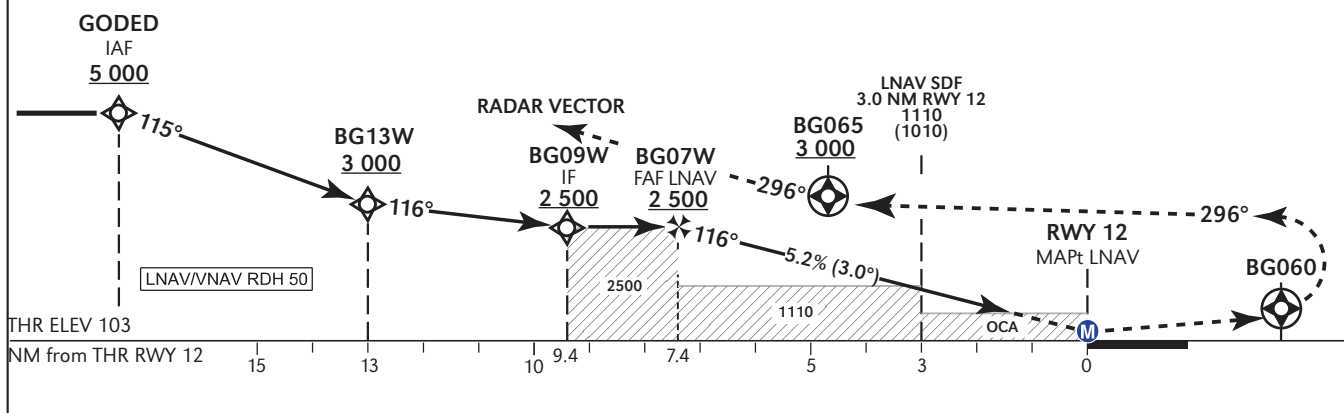
TEL-AVIV / BEN-GURION (LLBG)
RNP RWY 12



TRANSITION ALT 18 000

MISSED APPROACH:

Initial climb 3 000. Climb to **BG060** on course 116°, turn **RIGHT** course 296° to **BG065** at or above 3 000, continue on track 296° and expect radar vectors.



OCA (OCH)	A	B	C	D
LNAV	680 (580)			
LNAV/VNAV	470 (370)	480 (380)	600 (500)	610 (510)

Circling is not authorized	BARO VNAV TEMPERATURE MNM -10°C/MAX 60°C Effective VPA at 0°C is 2.8° Effective VPA at 45°C is 3.3°	RWY12	7	6	5	4	3	2	1
		ALT (HGT) FNA	2390 (2280)	2070 (1970)	1750 (1650)	1430 (1330)	1110 (1010)	790 (690)	
		GS	kt	80	100	120	140	160	180
		ROD: 5.2 %	ft/mIn	430	530	640	750	850	960

LLBG RNP RWY 12

Navigation Specification	Path Descriptor (Recommended)	Waypoint Identifier	Latitude Longitude	Fly-Over	Course/Track M° (T°)	Distance (NM)	Turn Direction	Altitude (ft)	Speed (Kts)	Remarks
RNAV-1	IF	GODED	32° 09' 54"N 034° 34' 22" E					+5 000		IAF
RNAV-1	TF	BG13W	32° 07' 38"N 034° 38' 56" E		115 (120.3)	4.5		+3 000		
RNAV-1	TF	BG09W	32° 05' 45"N 034° 42' 34" E		116 (121.3)	3.6	L	+2 500		IF
RNAV-1	TF	BG07W	32° 04' 41.7"N 034° 44' 36.3" E		116 (121.3)	2.0		+2 500		FAF
RNP APCH	TF	RWY12	32° 00' 51"N 034° 52' 01" E	Y	116 (121.3)	7.4		+153		MAPt

STANDARD MISSED APPROACH

Navigation Specification	Path Descriptor (Recommended)	Waypoint Identifier	Latitude Longitude	Fly-Over	Course/Track M° (T°)	Distance (NM)	Turn Direction	Altitude (ft)	Speed (Kts)	Remarks
RNAV-1	CF	BG060	31° 59' 02"N 034° 55' 31" E	Y	116 (121.3)				-185	
RNAV-1	CF	BG065	32° 00' 10"N 034° 44' 19" E	Y	296 (301.3)		R	+3 000	-185	
RNAV-1	FM	BG065	32° 00' 10"N 034° 44' 19" E		296 (301.3)			+3 000		

Non Precision Final Approach – Slope (Descent angle)	5.24% (3.0°)
Approach with Vertical Guidance (VPA) – Descent angle (Slope)	3.0° (5.24%)

HOLDING IDENTIFICATION

Holding Fix	Latitude Longitude	Inbound Course/Track M° (T°)	MAX IAS (Kts)	Altitude (ft)	Outbound Time / Distance	Turn Direction
GODED	32° 09' 54"N 034° 34' 22" E	115.0 (120.3)	230	+5 000	1 Min	L