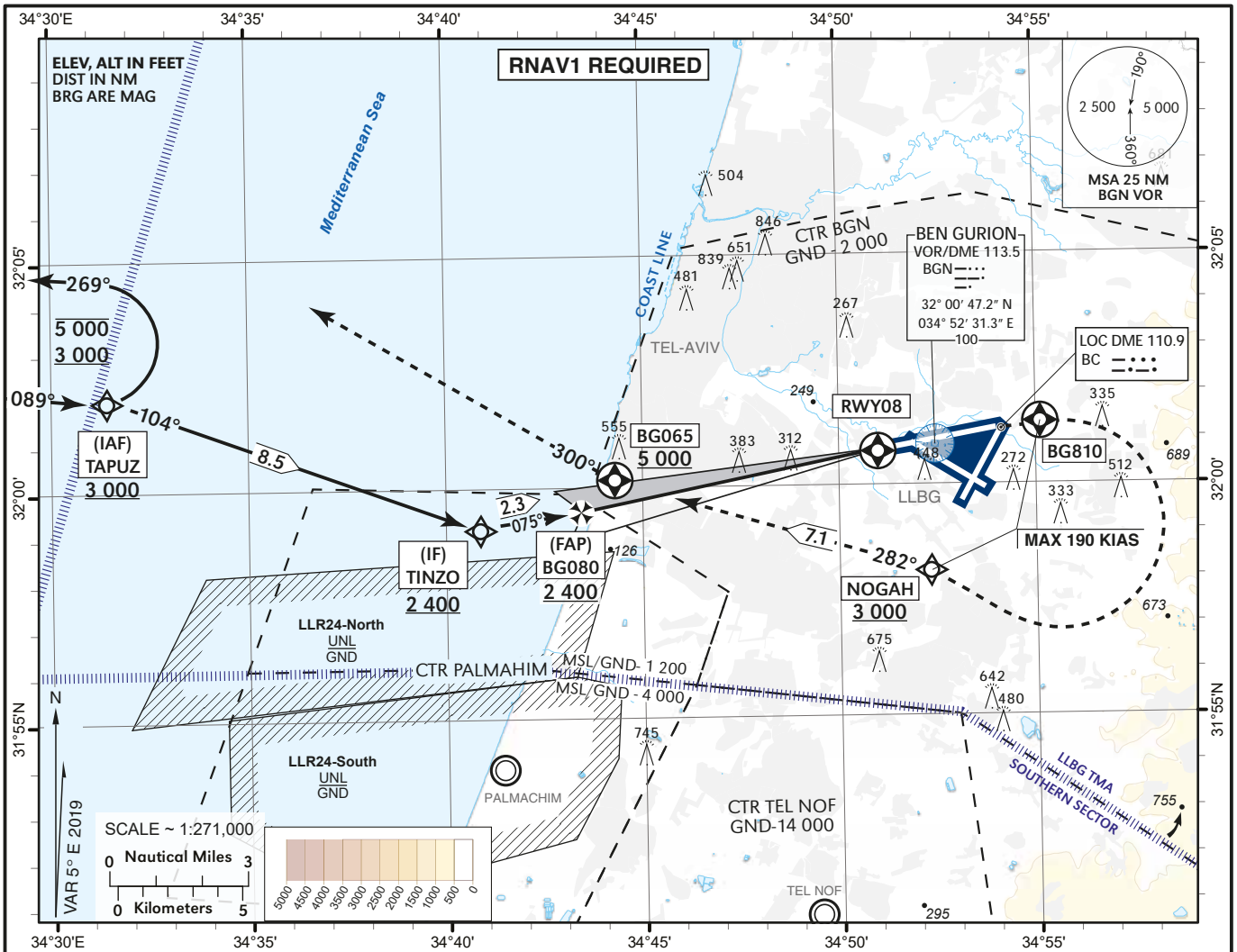


INSTRUMENT APPROACH CHART - ICAO
AD ELEV 134 ft
HEIGHTS RELATED TO RWY 08 - ELEV 97 ft
TRANSITION ALT 18 000

ATIS Arrival 132.50
APP 120.50
TWR 134.60

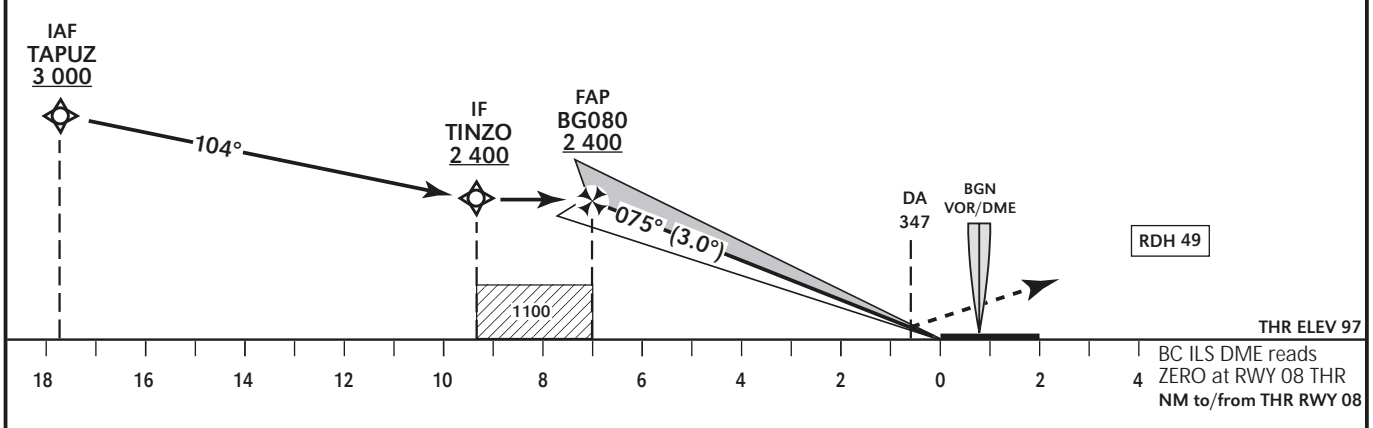
TEL-AVIV / BEN-GURION (LLBG)
ILS RWY 08



BC ILS DME	5.0	4.0	3.0	2.0
ALT (HAT)	1 760 (1 660)	1 440 (1 340)	1 110 (1 010)	790 (690)

MISSED APPROACH:
Initial climb 5 000. Fly To BG810 on course 075°. Turn RIGHT to NOGAH at or above 3 000 (MAX 190 KIAS), then on course 282° to BG065 at or above 5 000. Continue on track 300° and expect ATC radar vectors.
BG065 requires a 4.6% climb gradient up to 5 000 due to airspace restrictions. If unable, advise ATC.

DA(H) to be used due to basic ALS	DA(H)	347(250)
	OCA(H)	260(163)



CHANGES: OCA/H Updated, IAF & IF WPT's Changed, Speed Restriction Updated, Coding Table Updated.

RWY 08 ILS CAT I

Navigation Specification	Path Descriptor (Recommended)	Waypoint Identifier	Latitude Longitude	Fly-Over	Course/Track M° (T°)	Distance (NM)	Turn Direction	Altitude (ft)	Speed (Kts)	Remarks
RNAV1	IF	TAPUZ	32° 01' 57"N 034° 31' 24" E	-				+3 000		IAF
RNAV1	TF	TINZO	31° 59' 06.61"N 034° 40' 52.03" E	-	104 (109.4)	8.5		+2 400		IF
RNAV1	TF	BG080	31° 59' 31.68"N 034° 43' 33.04" E	-	075 (079.7)	2.3	L	+2 400		FAP
RNAV1	TF	RWY08	32° 00' 46.30"N 034° 51' 39.10" E	Y	075 (079.8)	7.0		+146		MAPt

GP angle (Slope)	3.0° (5.24%)
------------------	--------------

STANDARD MISSED APPROACH

Navigation Specification	Path Descriptor (Recommended)	Waypoint Identifier	Latitude Longitude	Fly-Over	Course/Track M° (T°)	Distance (NM)	Turn Direction	Altitude (ft)	Speed (Kts)	Remarks
RNAV1	TF	BG810	32° 01' 18"N 034° 55' 07" E	Y	075 (079.8)	3.2			-190	
RNAV1	DF	NOGAH	31° 58' 08"N 034° 52' 19" E	-			R	+3 000	-190	
RNAV1	TF	BG065	32° 00' 10"N 034° 44' 19" E	Y	282 (286.6)	7.1		+5 000		
RNAV1	FM	BG065	32° 00' 10"N 034° 44' 19" E	Y	300 (305.0)					

HOLDING IDENTIFICATION

Holding Fix	Latitude Longitude	Inbound Course/Track M° (T°)	MAX IAS (Kts)	Altitude (ft)	Outbound Time / Distance	Turn Direction
TAPUZ	32° 01' 57"N 034° 31' 24" E	089 (094.3)		-5 000 +3 000	1 Min	L