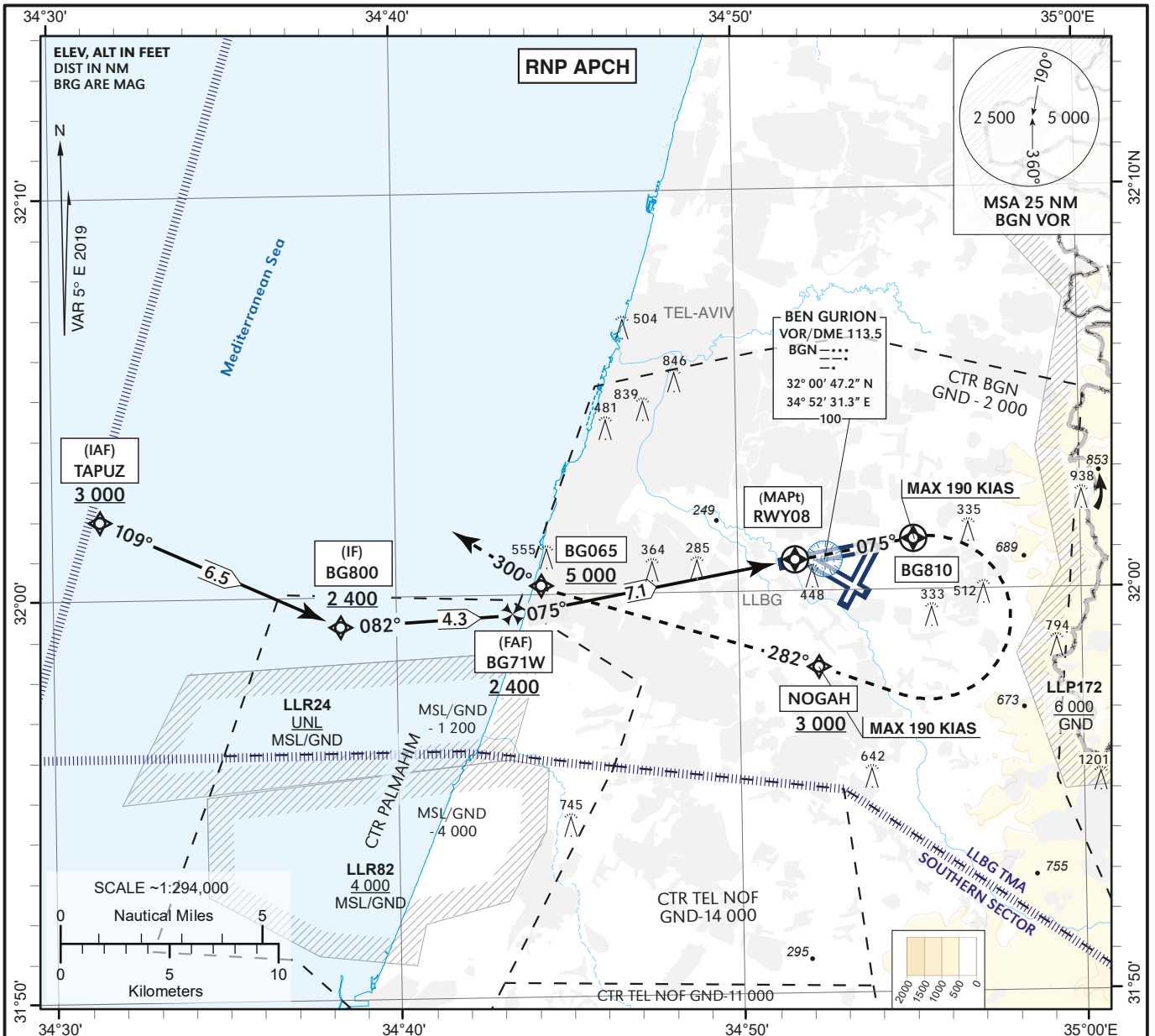


**INSTRUMENT
APPROACH
CHART - ICAO**

**AERODROME ELEV 134 ft
HEIGHTS RELATED TO
THR RWY 08 - ELEV 97 ft**

**ATIS Arrival 132.50
ARR 131.10
APP 120.50
TWR 134.60**

**TEL-AVIV / BEN-GURION (LLBG)
RNP RWY 08**



<p>TRANSITION ALT 18 000</p> <p>MISSED APPROACH: Initial climb 5 000. Fly To BG810 on course 075°. Turn RIGHT to NOGAH at or above 3 000 (MAX 190 KIAS), then on course 282° to BG065 at or above 5 000. Continue on track 300° and expect ATC radar vectors.</p> <p>CAT A & B requires 5.1% climb gradient up to 5 000 due to airspace restrictions. If unable, advise ATC.</p> <p>CAT C & D requires 4.5% climb gradient up to 5 000 due to airspace restrictions. If unable, advise ATC.</p> <p>BARO VNAV TEMPERATURE MNM -10°C/MAX 60°C Effective VPA at 0°C is 2.8%. Effective VPA at 45°C is 3.3%.</p>	RWY08	7	6	5	4	3	2
	ALT (HGT)	2 380 (2 280)	2 060 (1 970)	1 740 (1 650)	1 420 (1 330)	1 110 (1 010)	790 (690)

CONTACT ATC AND EXPECT INSTRUCTIONS

		OCA (OCH)	A	B	C	D		
STA	LNAV	2.5%	610 (520)					
	LNAV/VNAV	2.5%	530 (440)	540 (450)	550 (460)			
		CIRCLING					N/A	
GS	KT	80	100	120	140	160	180	
ROD: 5.2%		ft/min	424	531	637	743	849	955

RNP RWY 08

Navigation Specification	Path Descriptor (Recommended)	Waypoint Identifier	Latitude Longitude	Fly-Over	Course/Track M° (T°)	Distance (NM)	Turn Direction	Altitude (ft)	Speed (Kts)	Remarks
RNAV-1	IF	TAPUZ	32° 01' 57" N 34° 31' 24" E	-				+3 000		IAF
RNAV-1	TF	BG800	31° 59' 17" N 34° 38' 23" E	-	109 (114.1)	6.5		+2 400		IF
RNAV-1	TF	BG71W	31° 59' 31" N 34° 43' 27" E	-	082 (086.9)	4.3	L	+2 400		FAF
RNP APCH	TF	RWY08	32° 00' 46" N 34° 51' 39" E	Y	075 (079.8)	7.1		+147		MAPt

RNP RWY 08 - Missed Approach

Navigation Specification	Path Descriptor (Recommended)	Waypoint Identifier	Latitude Longitude	Fly-Over	Course/Track M° (T°)	Distance (NM)	Turn Direction	Altitude (ft)	Speed (Kts)	Remarks
RNAV-1	CF	BG810	32° 01' 18" N 34° 55' 07" E	Y	075 (079.8)	3.0				
RNAV-1	DF	NOGAH	31° 58' 08" N 34° 52' 19" E	-			R	+3 000	-190	
RNAV-1	CF	BG065	32° 00' 10" N 34° 44' 19" E	-	282 (286.6)	7.1		+5 000		
RNAV-1	FM	BG065	32° 00' 10" N 34° 44' 19" E	-	300 (305.0)					