

AERODROME CHART - ICAO

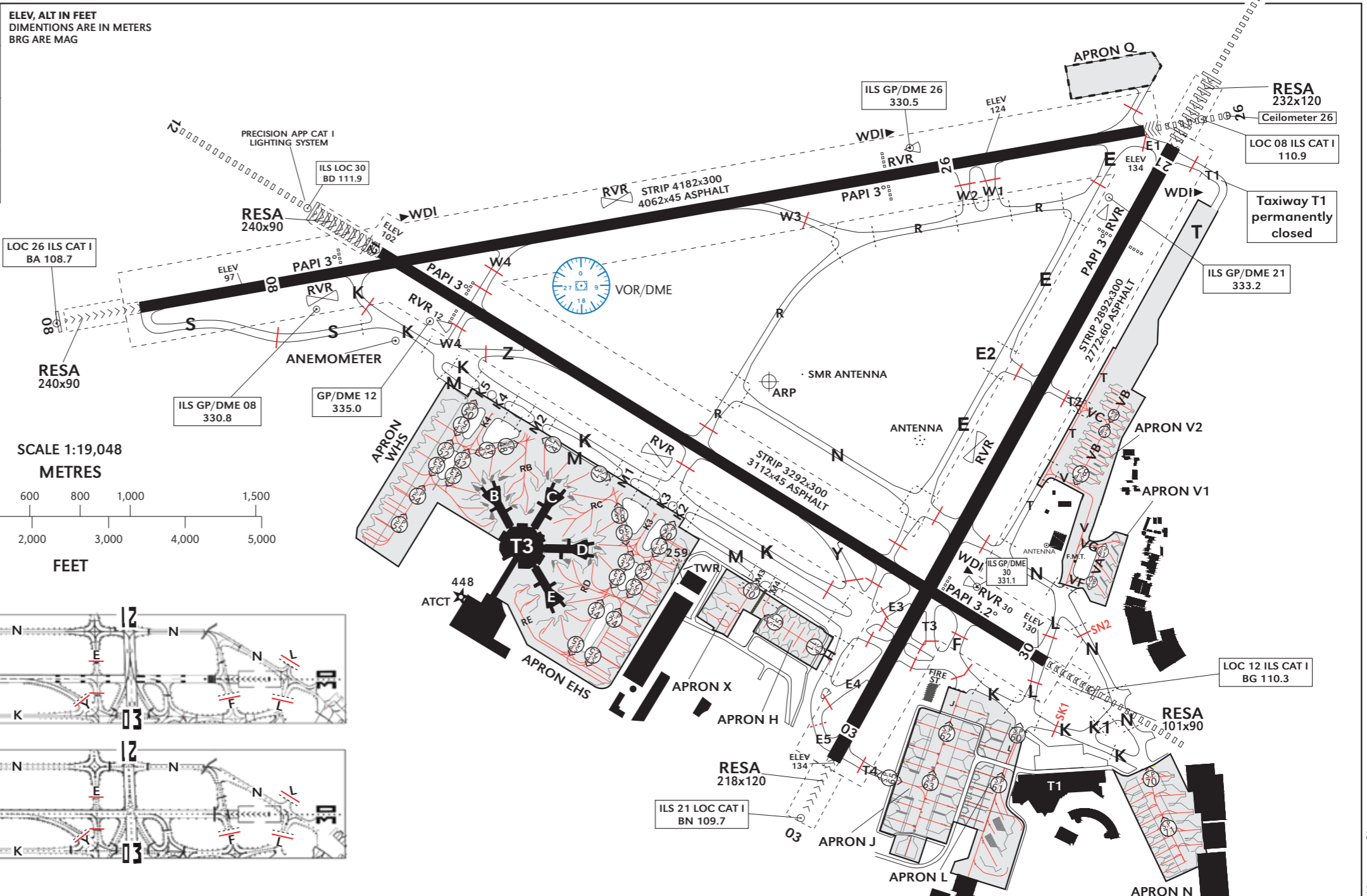
32° 00' 34" N 034° 53' 08" E

ELEV 134 ft

ATIS Departure 132.80 ATIS Arrival 132.50 GND WEST 121.75 GND EAST 121.95 TWR 134.60
When RWY 21 Operative: BY ATC - TWR (ARR) 132.10

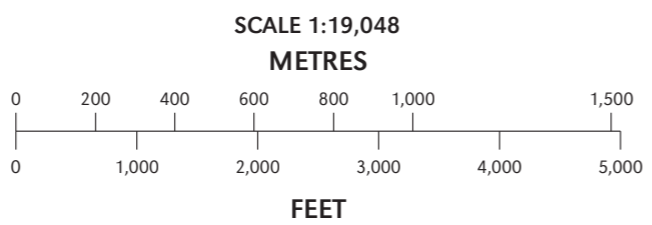
TEL-AVIV / BEN-GURION (LLBG)

RWY	THR	BEARING	STRENGTH
03	31° 59' 46.38" N 034° 53' 09.89" E	PCN 90/F/C/W/T	
21	32° 01' 05.25" N 034° 54' 00.81" E		
08	32° 00' 46.29" N 034° 51' 39.14" E	PCN 90/F/C/X/T	
26	32° 01' 03.83" N 034° 53' 33.88" E		
12	32° 00' 51.14" N 034° 52' 00.56" E	PCN 90/F/C/W/T	
30	31° 59' 59.88" N 034° 53' 39.12" E		

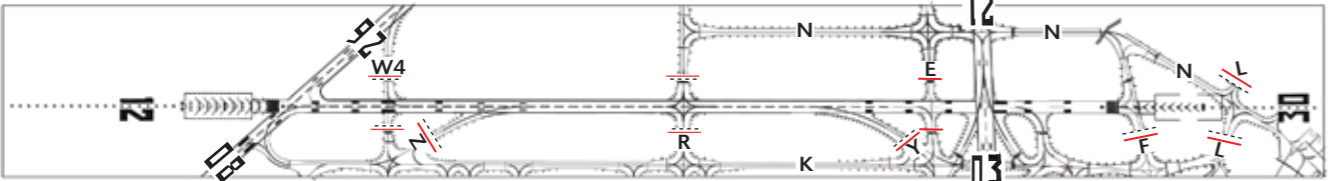


LEGEND

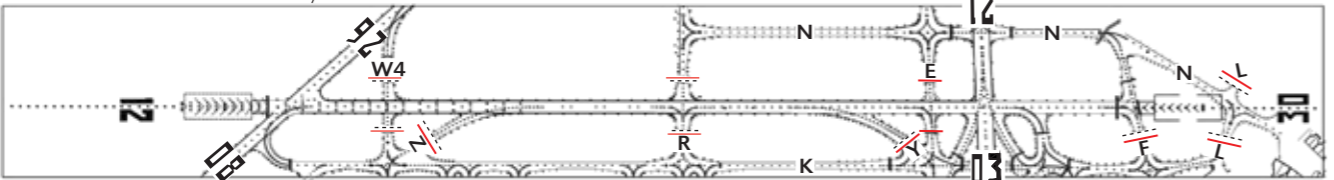
TAXIWAY	M
STARTING POINT	SP
GATE LEAD IN TAXILANE	RC
AIRCRAFT STAND	C-6
APRON NAME	WHS
INTERMEDIATE HOLDING POSITION	---
HOLDING POSITION	SN2
TAXILANE AND DIRECTION	→
APRON BOUNDARY	—



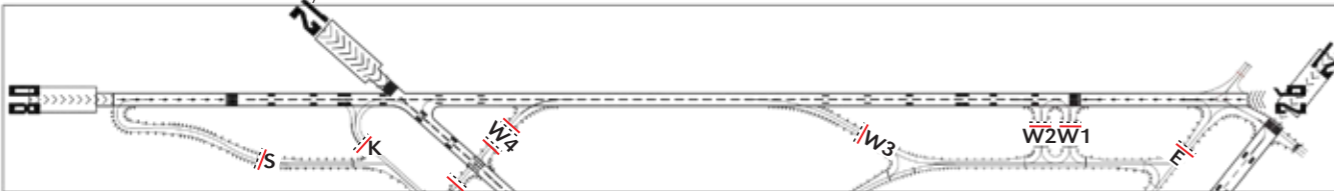
MARKING AIDS RWY 12/30 AND EXIT TWY



LIGHTING AIDS RWY 12/30 AND EXIT TWY



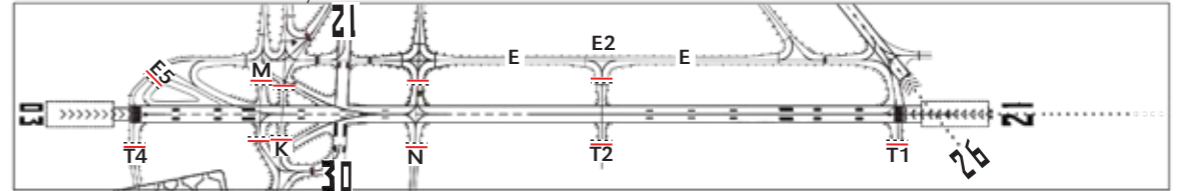
MARKING AIDS RWY 08/26 AND EXIT TWY



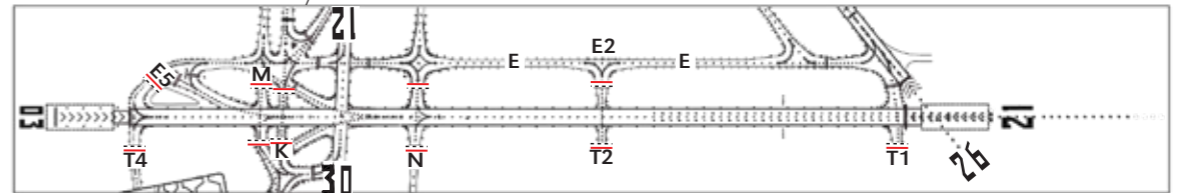
LIGHTING AIDS RWY 08/26 AND EXIT TWY



MARKING AIDS RWY 03/21 AND EXIT TWY



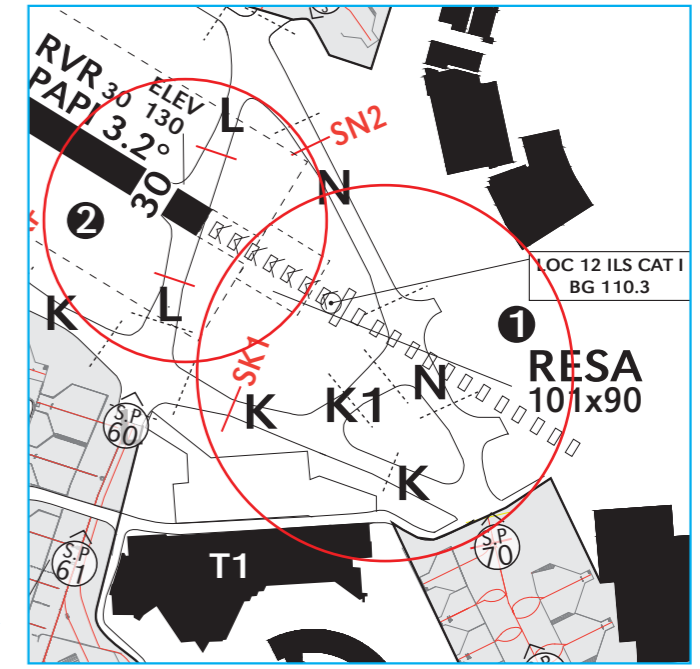
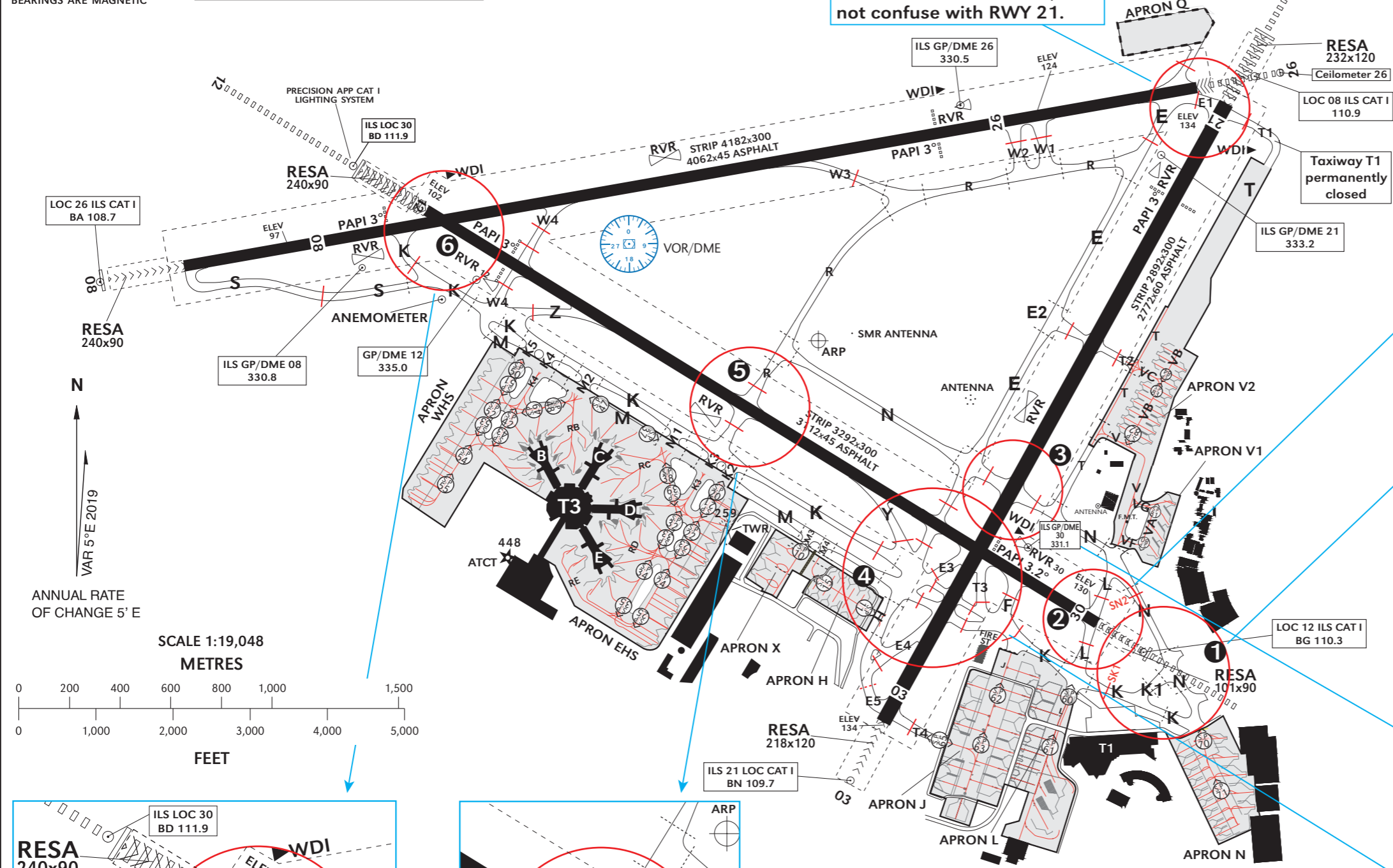
LIGHTING AIDS RWY 03/21 AND EXIT TWY



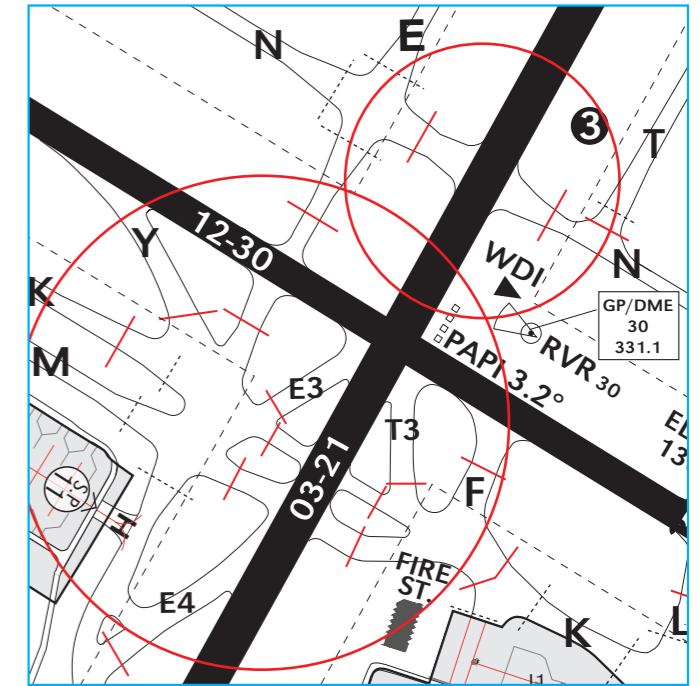
ELEVATIONS ARE IN FEET
DIMENSIONS ARE IN METRES
BEARINGS ARE MAGNETIC

BEN-GURION HOTSPOTS CHART

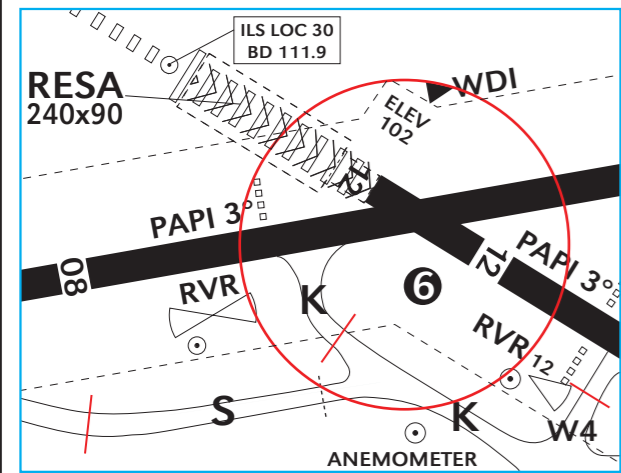
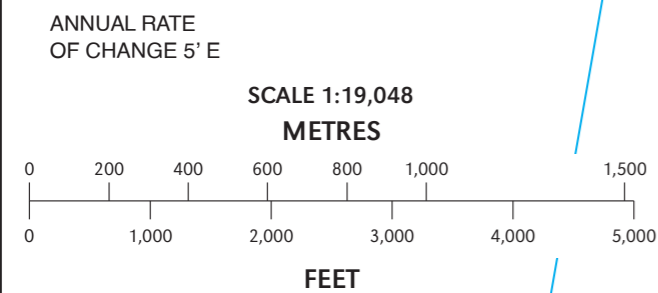
When lining up on RWY 26
from TWY E - TURN LEFT, do
not confuse with RWY 21.



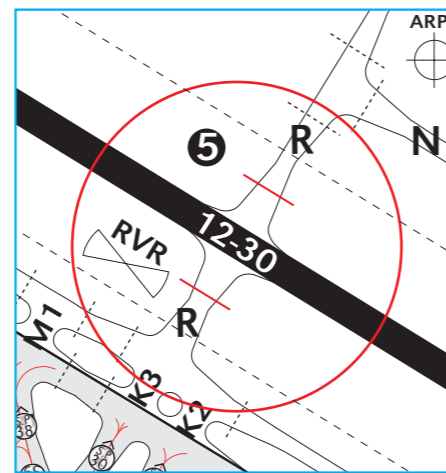
1 Caution: RWY 30 final approach infringement
Traffic taxiing via TWY K to TWY N or exiting APRON N via TWY N infringes final approach RWY 30, when in use.



2 3 4 5 Caution: RWY incursion
- Do not cross RWY without Specific ATC authorization
- Cross active runway on TOWER frequency- Expeditious crossing expected.
DO NOT CROSS RED STOP-BARS.



6 When lining up on RWY 12 DO NOT CONFUSE RWY 08 FOR RWY 12.



5 Crossing RWY 12/30 via TWY R.

LEGEND	
TAXIWAY	M
STARTING POINT	④
GATE LEAD IN TAXILANE	RC
AIRCRAFT STAND	C-6
APRON NAME	WHS
INTERMEDIATE HOLDING POSITION	---
HOLDING POSITION	SN2
TAXILANE AND DIRECTION	→
APRON BOUNDARY	—